

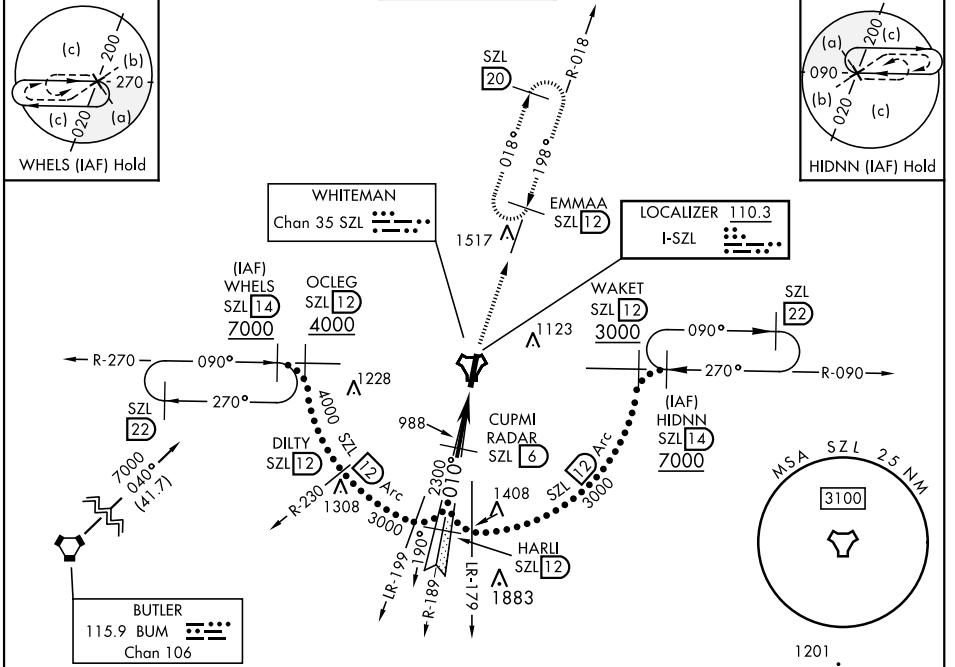
KNOB NOSTER, MISSOURI

# HI-ILS or LOC Z RWY 1

LOC I-SZL <b>110.3</b>	APCH CRS <b>010°</b>	Rwy Idg <b>12,400</b> TDZE <b>837</b> Arprt Elev <b>871</b>	AL-496 [USAF]	WHITEMAN AFB (KSZL)
---------------------------	-------------------------	---	---------------	---------------------

RADAR or DME required.		ALSIF-1 <b>(A1)</b>	MISSED APPROACH: Climb to 3000 via SZL TACAN R-018 to EMMAA and hold.
* When ALS inop, increase CAT CDE RVR to 40 and vis to 3/4 mile. ** When ALS inop, increase CAT CDE vis to 1/4 miles. *** Circling not authorized W of Rwy 1-19.			

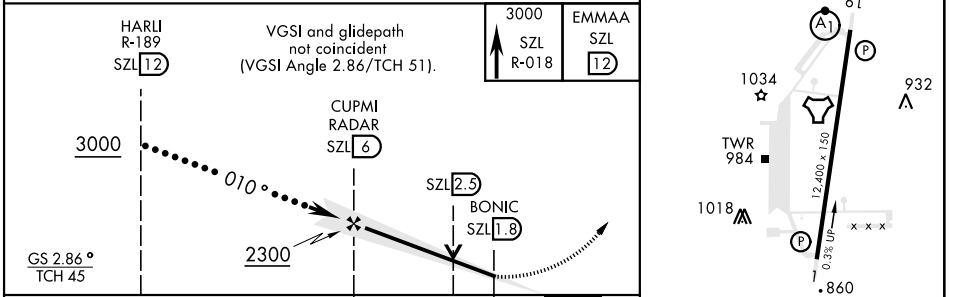
ATIS ★ <b>118.725 239.025</b>	APP CON ★ <b>127.45 284.0</b>	TOWER ★ <b>132.4 318.8</b>	GND CON ★ <b>119.125 275.8</b>	CLNC DEL ★ <b>121.75 335.8</b>	ASR
----------------------------------	----------------------------------	-------------------------------	-----------------------------------	-----------------------------------	-----



NC-3, 28 NOV 2024 to 26 DEC 2024

NC-3, 28 NOV 2024 to 26 DEC 2024

EMERG SAFE ALT 100 NM 4700



CATEGORY	C	D	E
S-ILS 1*	1037/24	200	(200-1/2)
S-LOC 1**	1260/40	423	(400-3/4)
CIRCLING ***	1340-1 1/2 469 (500-1 1/2)	1460-2	589 (600-2)

ELEV 871	TDZE 837
HRL Rwy 1-19 (A1) 010°	
FAF to MAP 4.2 NM	
Knots	120 140 160 180 200
Min:Sec	2:06 1:48 1:35 1:24 1:16

KNOB NOSTER, MISSOURI

38°44'N-93°33'W

WHITEMAN AFB (KSZL)

Amdt 1 10OCT19

# HI-ILS or LOC Z RWY 1