

KNOB NOSTER, MISSOURI

# ILS or LOC Y RWY 1

LOC I-SZL <b>110.3</b>	APCH CRS <b>010°</b>	Rwy Idg TDZE Arpt Elev	<b>12,400</b> <b>837</b> <b>871</b>
---------------------------	-------------------------	------------------------------	---

AL-496 (USAF)

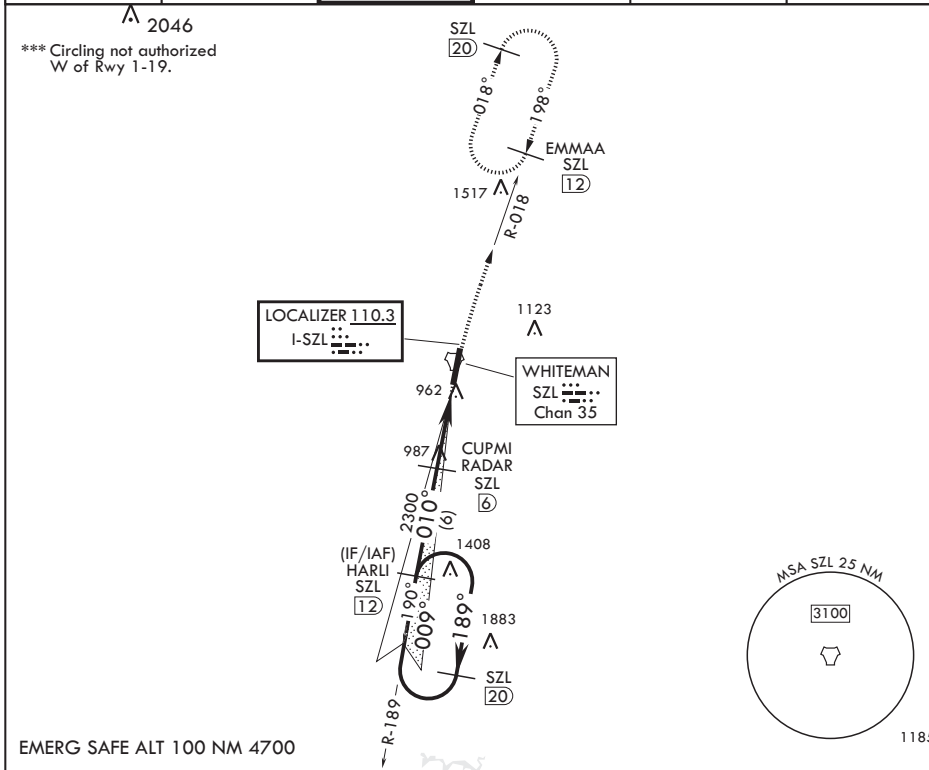
WHITEMAN AFB (KSZL)

RADAR or DME required

▲ \* When ALS inop, increase CAT ABCDE RVR to 40, vis to 3/4 mile.  
 \*\* When ALS inop, increase CAT AB RVR to 55, vis to 1 mile; CAT CDE vis to 1 1/4 miles.

ALSF-1 MISSED APPROACH: Climb to 3000 via SZL TACAN R-018 to EMMAA and hold.

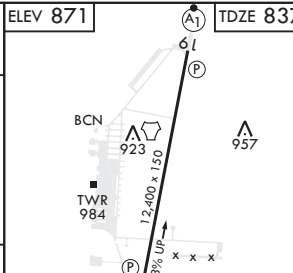
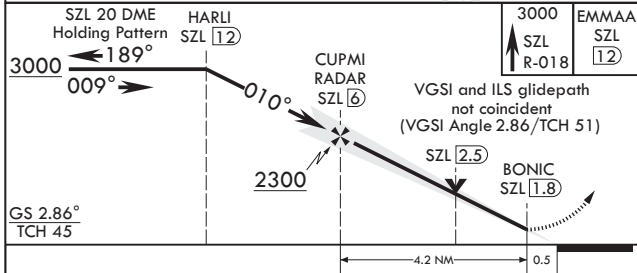
ATIS★ <b>118.725 239.025</b>	APP CON★ <b>127.45 284.0</b>	TOWER★ <b>132.4 318.8</b>	GND CON★ <b>119.125 275.8</b>	CLNC DEL★ <b>121.75 335.8</b>	ASR
---------------------------------	---------------------------------	------------------------------	----------------------------------	----------------------------------	-----



NC-3, 28 NOV 2024 to 26 DEC 2024

NC-3, 28 NOV 2024 to 26 DEC 2024

EMERG SAFE ALT 100 NM 4700



CATEGORY	A	B	C	D	E
S-ILS 1*	1037/24		200	(200-½)	
S-LOC 1**	1260/24	423 (400-½)	1260/40	423	(400-¾)
CIRCLING***	1300-1 429 (500-1)	1340-1 469 (500-1)	1340-1½ 469 (500-1½)	1460-2 589 (600-2)	

ELEV 871	TDZE 837				
FAF to MAP 4.2 NM					
Knots	60	90	120	150	180
Min:Sec	4:12	2:48	2:06	1:41	1:24

KNOB NOSTER, MISSOURI

38°44'N - 93°33'W

WHITEMAN AFB (KSZL)

Amdt 1 10OCT19

# ILS or LOC Y RWY 1