

KNOB NOSTER, MISSOURI

RNAV (GPS) RWY 1

APCH CRS	Rwy Idg	12,400
010°	TDZE	837
	Arprt Elev	871

AL-496 (USAF)

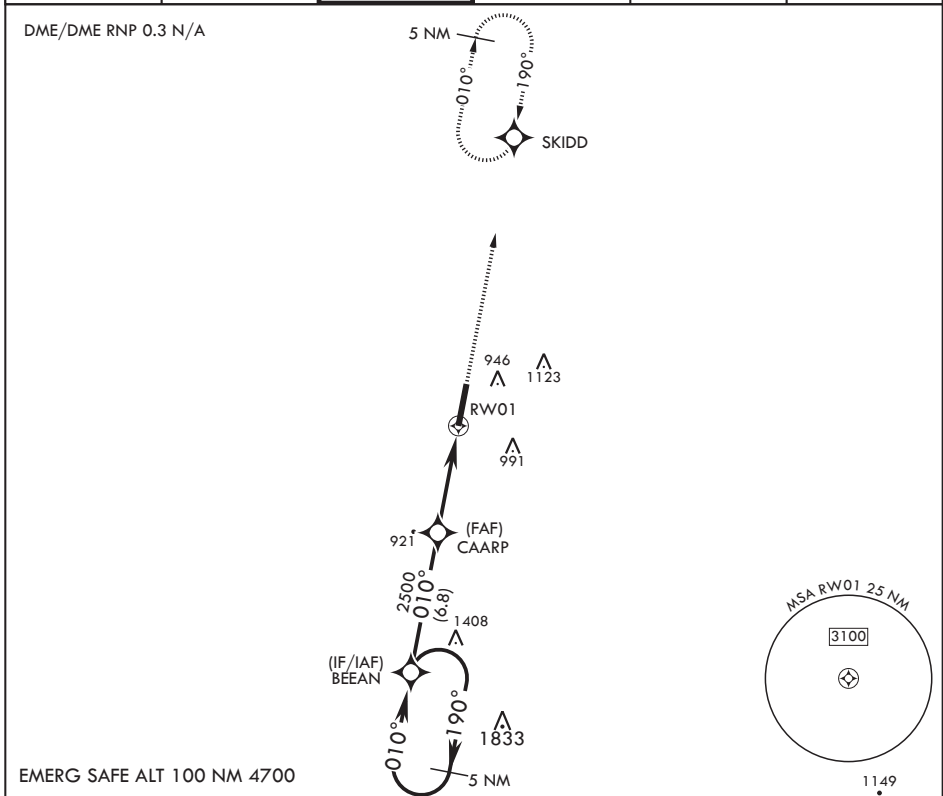
WHITEMAN AFB (KSZL)

⚠ * When ALS inop, increase CAT AB RVR to 55 and vis to 1 mile, CAT CDE vis to 1 3/8 miles.
 ** Circling not authorized W of Rwy 1-19.



MISSED APPROACH: Climb to 3000 direct SKIDD and hold.

ATIS*	APP CON*	TOWER*	GND CON*	CLNC DEL*	ASR
118.725 239.025	127.45 284.0	132.4 318.8	119.125 275.8	121.75 335.8	



<p>5 NM Holding Pattern</p> <p>3000 ← 190° BEEAN</p> <p>010° →</p> <p>2.92° ∠ TCH 51</p>		<p>3000</p> <p>SKIDD</p> <p>ELEV 871</p> <p>TDZE 837</p>																		
<p>5 NM Holding Pattern</p> <p>2500</p> <p>1.3 NM to RWY01</p> <p>5.2 NM</p>																				
<table border="1"> <thead> <tr> <th>CATEGORY</th> <th>A</th> <th>B</th> <th>C</th> <th>D</th> <th>E</th> </tr> </thead> <tbody> <tr> <td>LNAV MDA*</td> <td>1280/24</td> <td>443 (500-½)</td> <td>1280/45</td> <td>443 (500-¾)</td> <td></td> </tr> <tr> <td>C CIRCLING**</td> <td>1300-1 429 (500-1)</td> <td>1340-1 469 (500-1)</td> <td>1340-1½ 469 (500-1½)</td> <td>1460-2</td> <td>589 (600-2)</td> </tr> </tbody> </table>	CATEGORY	A		B	C	D	E	LNAV MDA*	1280/24	443 (500-½)	1280/45	443 (500-¾)		C CIRCLING**	1300-1 429 (500-1)	1340-1 469 (500-1)	1340-1½ 469 (500-1½)	1460-2	589 (600-2)	
CATEGORY	A	B	C	D	E															
LNAV MDA*	1280/24	443 (500-½)	1280/45	443 (500-¾)																
C CIRCLING**	1300-1 429 (500-1)	1340-1 469 (500-1)	1340-1½ 469 (500-1½)	1460-2	589 (600-2)															

KNOB NOSTER, MISSOURI

38°44'N - 93°33'W

WHITEMAN AFB (KSZL)

Amdt 6 10OCT19

RNAV (GPS) RWY 1

NC-3, 28 NOV 2024 to 26 DEC 2024

NC-3, 28 NOV 2024 to 26 DEC 2024