


WAAS CH 63005 W35A	APP CRS 354°	Rwy Idg TDZE Apt Elev	7105 2875 2885
--	------------------------	-----------------------------	---

RNAV (GPS) RWY 35

LIBERAL MID-AMERICA RGNL (L.B.L.)

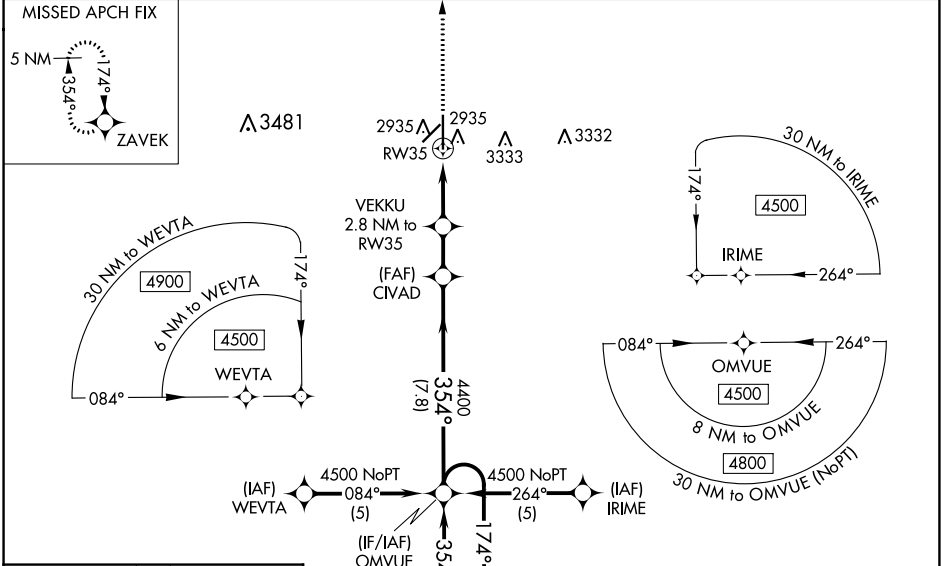
RNP APCH - GPS.

⚠ For uncompensated Baro-VNAV systems, LNAV/VNAV NA below -20°C or above 54°C. Circling NA east of Rwy 17-35. When local altimeter setting not received, use GUY altimeter setting and increase LPV DA to 3187 feet; increase LNAV/VNAV DA to 3237 feet and all visibilities 1/8 SM. Increase all MDAs 120 feet and LNAV visibility Cat C/D 3/8 SM, and Circling visibility Cat C/D 1/4 SM. Baro-VNAV and VDP NA when using GUY altimeter setting.

MALSR 

MISSED APPROACH: Climb to 4600 direct ZAVEK and hold.

AWOS-3PT 118.375	KANSAS CITY CENTER 134.0 257.625	UNICOM 122.8 (CTAF) 0
----------------------------	--	---------------------------------

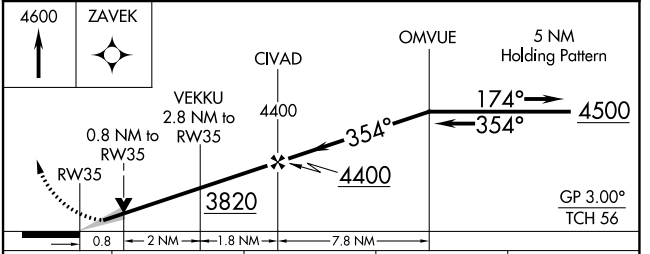
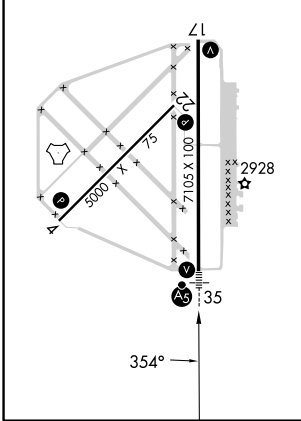


ELEV 2885	D	TDZE 2875
-----------	----------	-----------

REIL Rws 4, 17 and 22 **0**

MIRL Rwy 4-22 **0**

HIRL Rwy 17-35 **0**



CATEGORY	A	B	C	D
LPV DA		3075-1/2	200 (200-1/2)	
LNAV/VNAV DA		3125-1/2	250 (300-1/2)	
LNAV MDA		3200-1/2	325 (400-1/2)	
C CIRCLING	3280-1 395 (400-1)	3340-1 455 (500-1)	3400-1 1/2 515 (600-1 1/2)	3460-2 575 (600-2)

NC-2, 28 NOV 2024 to 26 DEC 2024

NC-2, 28 NOV 2024 to 26 DEC 2024