

ILS or LOC RWY 4

LYNCHBURG RGNL/PRESTON GLENN FLD (LYH)

LOC I-LYH 110.1	APP CRS 036°	Rwy Idg 6800	TDZE 905
		Apt Elev 938	

ADF required for LOC only. DME required.

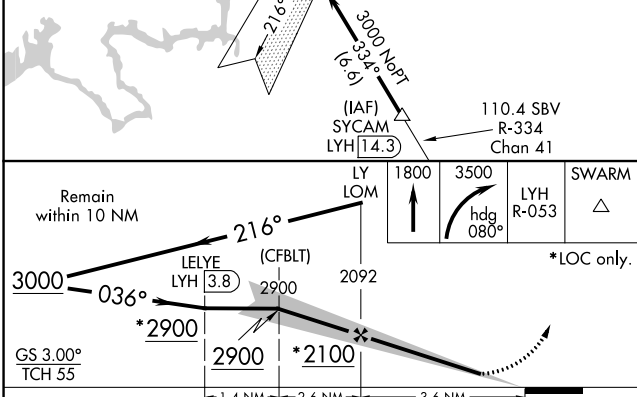
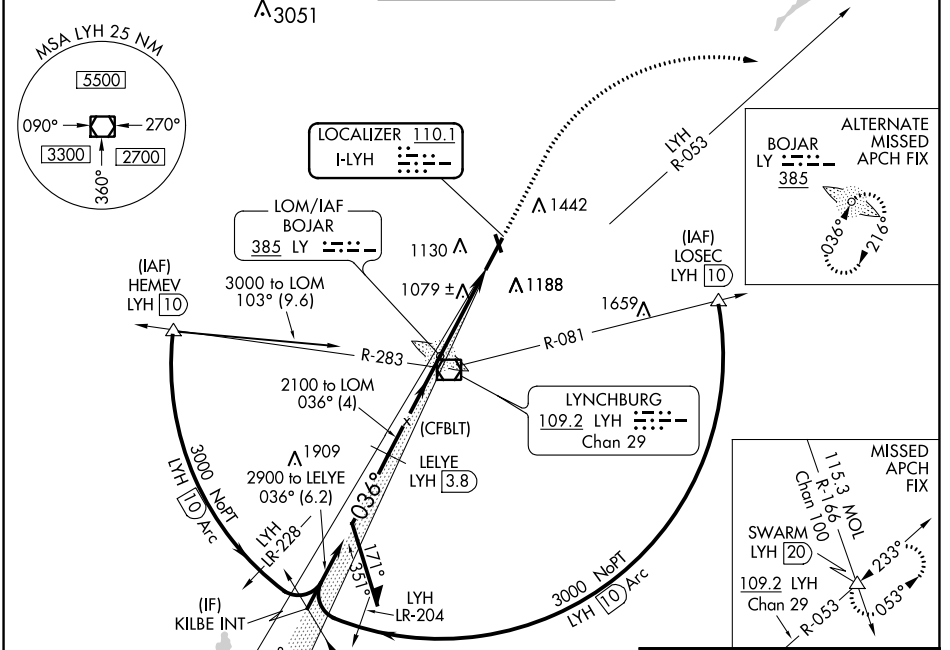
⚠ Circling Rwy 17 NA at night. DME from LYH VOR/DME. Simultaneous reception of I-LYH and LYH DME required.

⚠ ** RVR 1800 authorized with use of FD or AP or HUD to DA.

MALS R 

MISSED APPROACH: Climb to 1800 then climbing right turn to 3500 on heading 080° and on LYH VOR/DME R-053 to SWARM INT/LYH 20 DME and hold.

ATIS 119.8	ROANOKE APP CON 135.0 254.325	LYNCHBURG TOWER ★ 127.65 (CTAF) 0 257.8	GND CON 121.9	UNICOM 122.95
----------------------	---	---	-------------------------	-------------------------



ELEV 938	D	TDZE 905
----------	---	----------

TWR 1041

383.7/5

22

35

7100 X 150

0.6% UP

036°

HIRL Rwy 4-22

MIRL Rwy 17-35

REIL Rwys 17, 22 and 35

FAF to MAP 3.6 NM					
Knots	60	90	120	150	180
Min:Sec	3:36	2:24	1:48	1:26	1:12

NE-3, 28 NOV 2024 to 26 DEC 2024

NE-3, 28 NOV 2024 to 26 DEC 2024

ILS or LOC RWY 4