

HI-TACAN Z RWY 21R

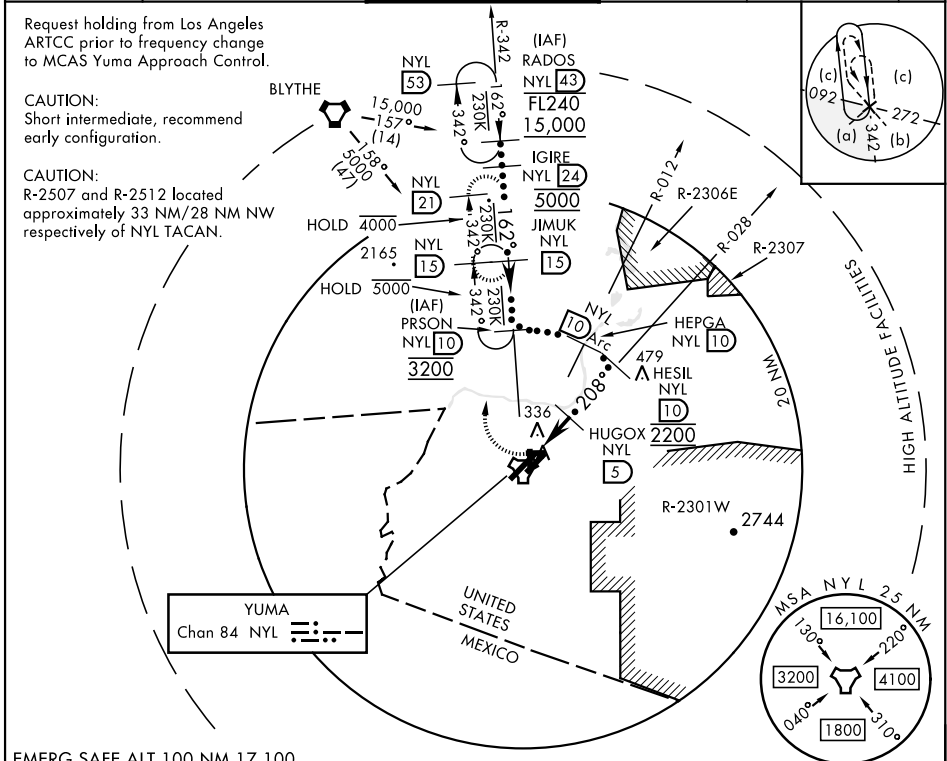
TACAN NYL Chan 84	APCH CRS 208°	Rwy ldg 13,300 TDZE 193 Arprt Elev 213
-----------------------------	-------------------------	---

AL-511 [UNSN]

YUMA MCAS/YUMA INTL (KNYL)

* When ALS inop, increase vis to 1 1/8 miles.
 MALS
 MISSED APPROACH: Climbing right turn to 4000 intercept NYL TACAN R-342 to JIMUK and hold, continue climb-in-hold to 4000.

ATIS★ 118.8 273.5	APP CON 124.7 371.975	TOWER★ 119.3 (CTAF) 0 377.075	GND CON 121.9 314.0	CLNC DEL 118.0 336.4	ASR/ PAR
-----------------------------	---------------------------------	---	-------------------------------	--------------------------------	-------------



EMERG SAFE ALT 100 NM 17,100

4000 JIMUK NYL 15 RADOS R-342 HEPGA R-012 HESIL R-028 HUGOX 5 TACAN HOBMA 1.3 HOBMA 2.4 3.4 NM 10 Arc 1500 2200 2700 3200 4000 5000 162° FL240 15,000 3.12° TCH 50	<table border="1"> <tr> <td>ELEV 213</td> <td>TDZE 193</td> </tr> <tr> <td>3L-21R 13,300 x 200</td> <td></td> </tr> <tr> <td>3R-21L 9239 x 150</td> <td></td> </tr> <tr> <td>8-26 6146 x 150</td> <td></td> </tr> <tr> <td>17-35 5710 x 150</td> <td></td> </tr> </table> TWR 3L 3P 21L 26 35 26 21 208° 21 26 35 26 21 208° <p>REIL Rwy 3R-21L, 3L, 35 HIRL Rwys 3R-21L and 3L-21R HIRL Rwys 8-26 and 17-35</p>	ELEV 213	TDZE 193	3L-21R 13,300 x 200		3R-21L 9239 x 150		8-26 6146 x 150		17-35 5710 x 150	
ELEV 213	TDZE 193										
3L-21R 13,300 x 200											
3R-21L 9239 x 150											
8-26 6146 x 150											
17-35 5710 x 150											
CATEGORY	C	D	E								
S-21R*	640-7/8	447	(500-7/8)								
CIRCLING	800-1 1/2 587 (600-1 1/2)	800-2 587 (600-2)									

HI-TACAN Z RWY 21R

SW-4, 28 NOV 2024 to 26 DEC 2024

SW-4, 28 NOV 2024 to 26 DEC 2024