

YUMA, ARIZONA

VOR/DME or TACAN RWY 17

VORTAC BZA 116.8 Chan 115	APCH CRS 167°	Rwy Idg TDZE Arpt Elev 5710 197 213
---	-------------------------	---

AL-511 [USN]

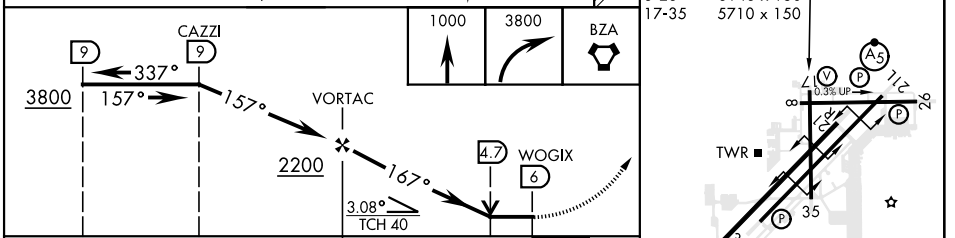
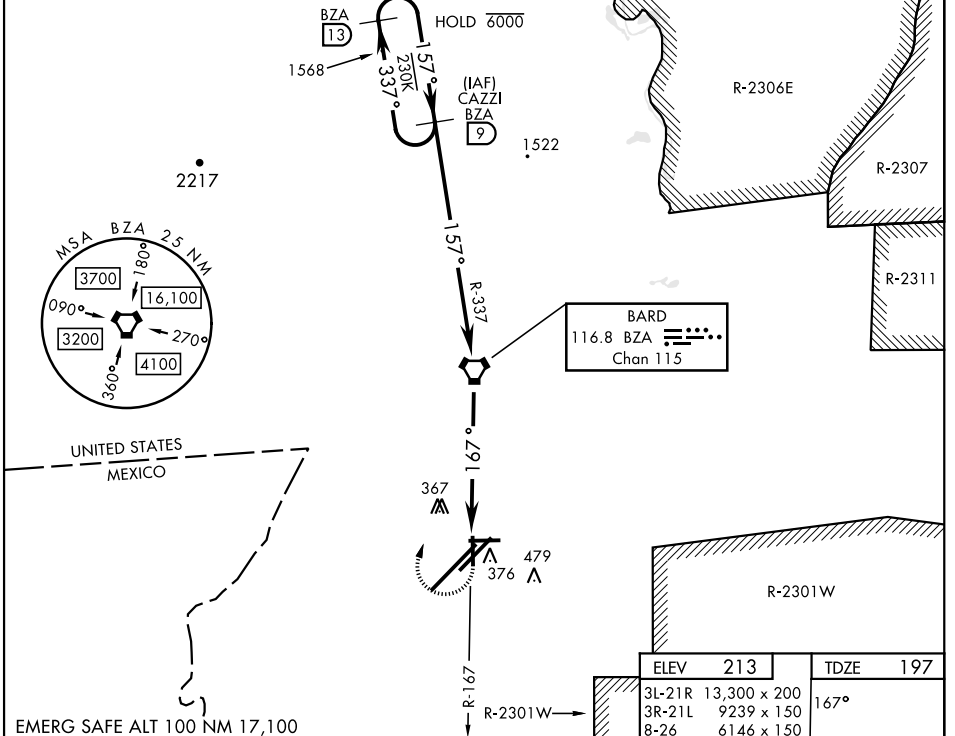
YUMA MCAS/YUMA INTL (KNYL)

MISSED APPROACH: Climb to 1000, then climbing right turn to 3800 direct BZA VORTAC and BZA R-337 to CAZZI and hold.

ATIS ★ 118.8 273.5	APP CON 124.7 371.975	TOWER ★ 119.3 (CTAF) 0 377.075	GND CON 121.9 314.0	CLNC DEL 118.0 336.4	ASR/ PAR
------------------------------	---------------------------------	---	-------------------------------	--------------------------------	-------------

Knots	60	120	180	240	300	360
V/V(fpm)	210	420	630	840	1050	1260

Min climb of 210 ft/NM to 3800 - Controlling Obstacle Ukn



CATEGORY	A	B	C	D
S-17	660-1 463 (500-1)		660-1½ 463 (500-1½)	
CIRCLING	680-1 467 (500-1)	700-1 487 (500-1)	800-1½ 587 (600-1½)	800-2 587 (600-2)

YUMA, ARIZONA
Amdt 5 22APR21

32° 39' N - 114° 36' W

YUMA MCAS/YUMA INTL (KNYL)

VOR/DME or TACAN RWY 17

SW-4, 28 NOV 2024 to 26 DEC 2024

SW-4, 28 NOV 2024 to 26 DEC 2024