


WAAS CH <b>81809</b> <b>W22A</b>	APP CRS <b>223°</b>	Rwy Idg TDZE Apt Elev	<b>8001</b> <b>598</b> <b>598</b>
--	------------------------	-----------------------------	---

# RNAV (GPS) RWY 22

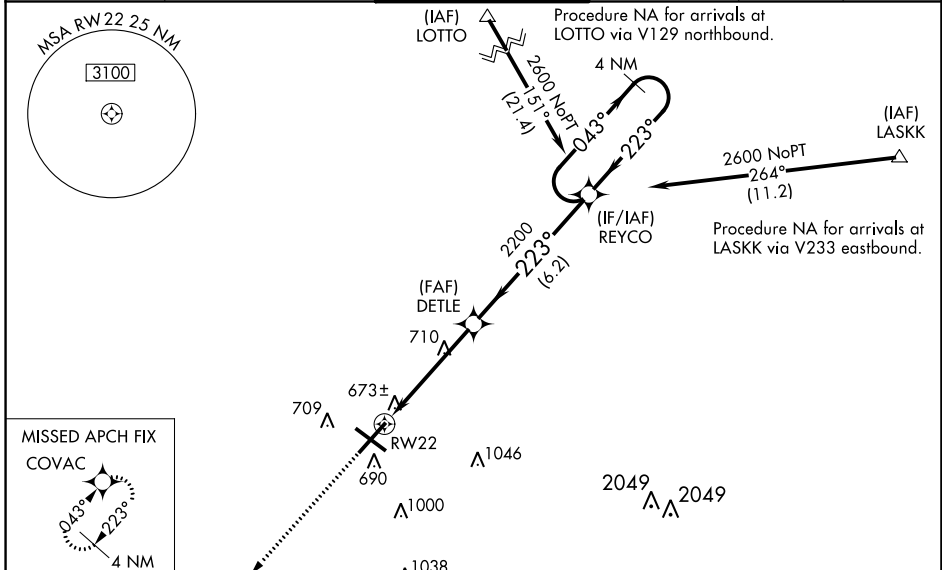
ABRAHAM LINCOLN CAPITAL (SPI)

RNP APCH - GPS.

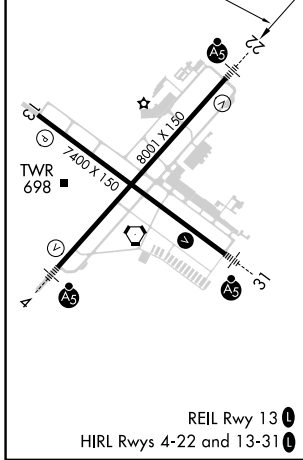
**ASR** For uncompensated Baro-VNAV systems, LNAV/VNAV NA below -16°C or above 54°C. When local altimeter not received, use Lincoln altimeter setting: increase LPV DA to 942 feet and all visibilities 1/8 SM, LNAV/VNAV DA to 1108 feet and all visibilities 1/8 SM; increase all MDAs 60 feet and visibility LNAV and Circling Cat C/D 1/4 SM. Baro-VNAV and VDP NA when using Lincoln altimeter setting. For inop ALS, increase LPV all Cats visibility to 3/8 SM. For inop ALS when using Lincoln altimeter setting, increase LPV all Cats visibility to 1 SM, increase LNAV/VNAV all Cats visibility to 1 3/8 SM.

MALSR  MISSED APPROACH: Climb to 2700 direct COVAC and hold.

ATIS <b>127.65 270.1</b>	SAINT LOUIS APP CON ★ <b>126.15 323.0</b>	SPRINGFIELD TOWER ★ <b>121.3 (CTAF) 0 257.8</b>	GND CON <b>121.9 348.6</b>	CLNC DEL <b>121.7</b>	UNICOM <b>122.95</b>
-----------------------------	--	--	-------------------------------	--------------------------	-------------------------



ELEV 598	<b>D</b>	TDZE 598
----------	----------	----------



2700	↑	COVAC	4 NM Holding Pattern			
RW22		1 NM to RW22	DETLE	REYCO	2600	GP 3.00° TCH 54
1 NM		3.8 NM	6.2 NM			
CATEGORY	A	B	C	D		
LPV DA	884-1/2		286 (300-1/2)			
LNAV/VNAV DA	1050-7/8		452 (500-7/8)			
LNAV MDA	980-1/2		382 (400-1/2)		980-5/8 382 (400-5/8)	
<b>C</b> CIRCLING	1040-1/4 442 (500-1/4)	1100-1/4 502 (600-1/4)	1360-2/4 762 (800-2/4)	1380-2/2 782 (800-2/2)		

EC-3, 28 NOV 2024 to 26 DEC 2024

EC-3, 28 NOV 2024 to 26 DEC 2024