

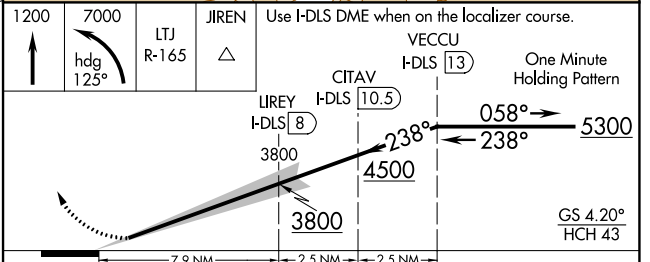
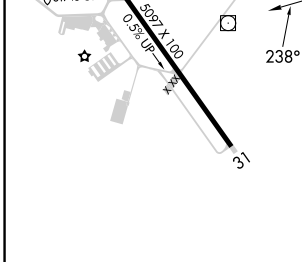
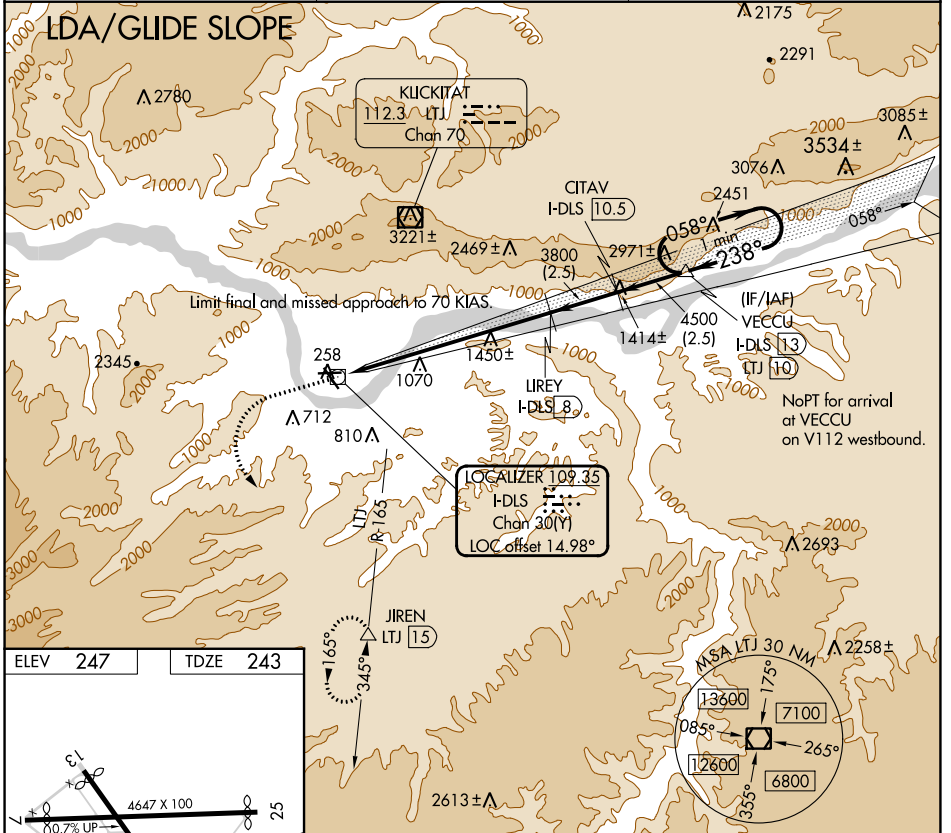
LOC/DME I-DLS <b>109.35</b> Chan 30(Y)	APP CRS <b>238°</b>	Rwy Idg TDZE <b>4451</b> <b>243</b> Apt Elev <b>247</b>
--	------------------------	---

# COPTER LDA/DME RWY 25

COLUMBIA GORGE RGNL/THE DALLES MUNI(DLS)

**NA** When local altimeter setting not received, procedure NA. MISSED APPROACH: Climb to 1200 then climbing left turn to 7000 on heading 125° and LTJ VOR/DME R-165 to JIREN/LTJ 1.5 DME and hold, continue climb-in-hold to 7000.

ASOS <b>135.175</b>	SEATTLE CENTER <b>119.65 257.6</b>	UNICOM <b>123.0 (CTAF) 0</b>
------------------------	---------------------------------------	---------------------------------



CATEGORY	COPTER	
H-25	783-1½	540 (600-1½)

NW-1, 28 NOV 2024 to 26 DEC 2024

NW-1, 28 NOV 2024 to 26 DEC 2024