

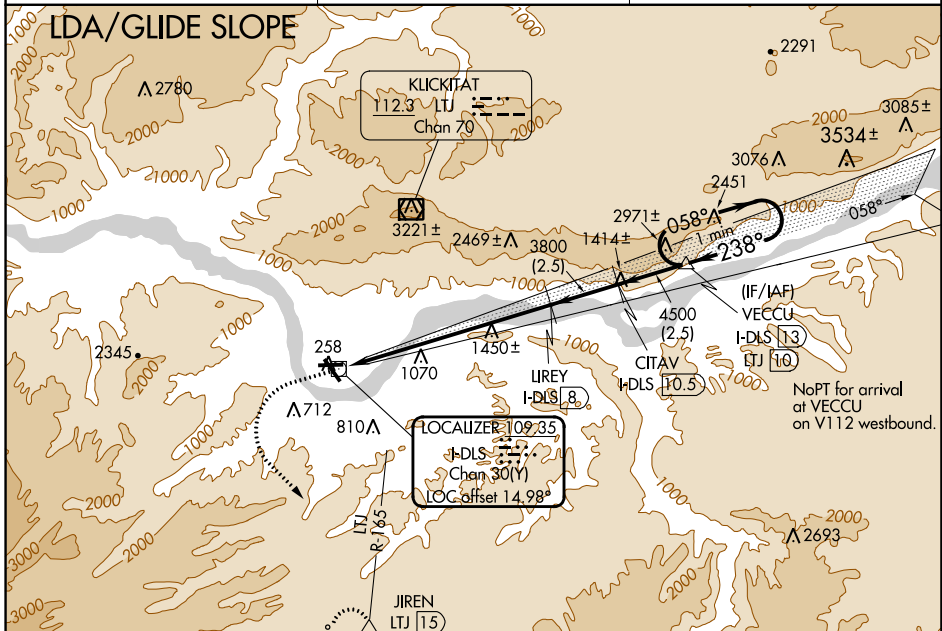
LOC/DME I-DLS 109.35 Chan 30(Y)	APP CRS 238°	Rwy Idg TDZE 4451 243	Apt Elev 247
--	------------------------	---	------------------------

LDA/DME RWY 25

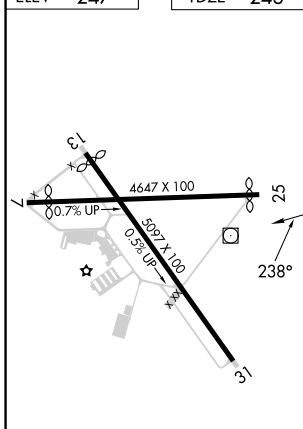
COLUMBIA GORGE RGNL/THE DALLES MUNI(DLS)

<p>NA When local altimeter setting not received, procedure NA. Glide slope provided by standard glide slope equipment.</p>	<p>MISSED APPROACH: Climb to 1600 then climbing left turn to 7000 on heading 120° and LTJ VOR/DME R-165 to JIREN/LTJ 15 DME and hold, continue climb-in-hold to 7000.</p>	
---	---	--

ASOS 135.175	SEATTLE CENTER 119.65 257.6	UNICOM 123.0 (CTAF) 0
------------------------	---------------------------------------	---------------------------------



ELEV 247	TDZE 243
----------	----------



1600	7000	LIREY I-DLS 8	JIREN △	Use I-DLS DME when on the localizer course.
↑	hdg 120°	LIREY I-DLS 8	JIREN △	VECCU I-DLS 13
		LIREY I-DLS 8	JIREN △	One Minute Holding Pattern
		LIREY I-DLS 8	JIREN △	5300
		LIREY I-DLS 8	JIREN △	GS 4.20° TCH 43

REIL Rwy 31 0	MIRL Rwy 7-25 and 13-31 0	CATEGORY	A	B	C	D
		S-LDA/GS 25	1368-3	1125 (1200-3)		NA

NW-1, 28 NOV 2024 to 26 DEC 2024

NW-1, 28 NOV 2024 to 26 DEC 2024