

WAAS CH <b>77542</b> <b>W34A</b>	APP CRS <b>339°</b>	Rwy Idg TDZE Apt Elev	<b>7003</b> <b>3916</b> <b>3942</b>
--	------------------------	-----------------------------	---

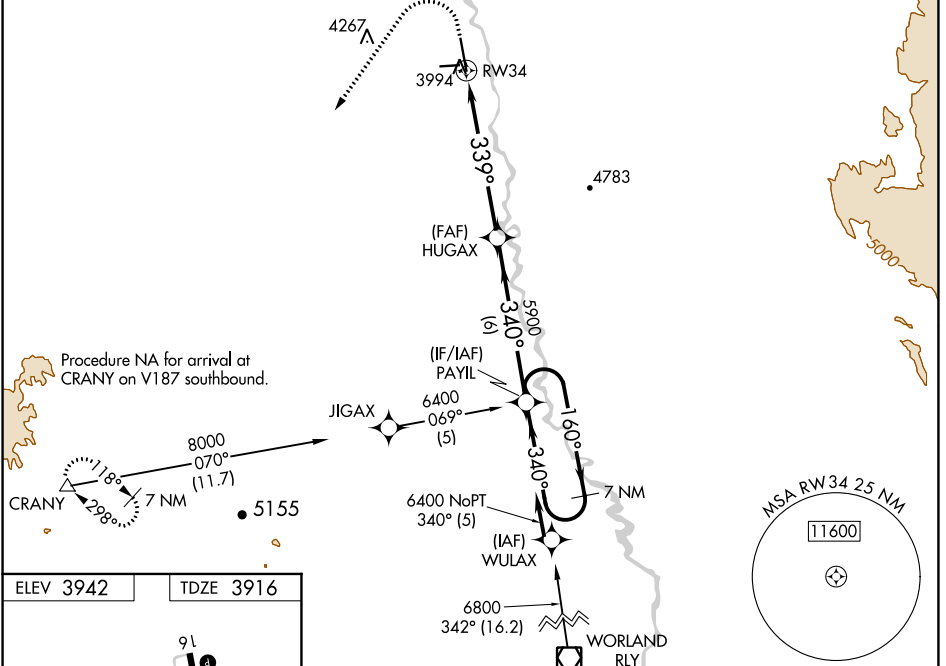
# RNAV (GPS) RWY 34

SOUTH BIG HORN COUNTY (GEY)

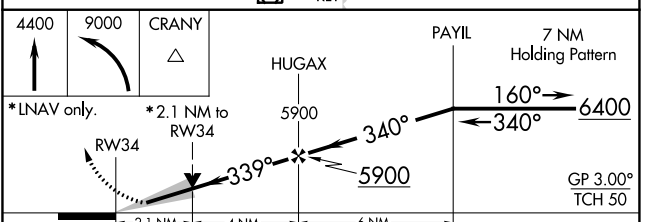
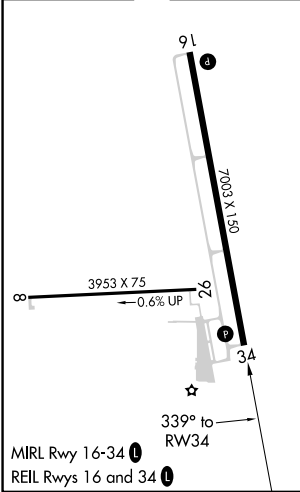
**⚠** Baro-VNAV NA when using Cowley/Lovell/Byron altimeter setting. For uncompensated Baro-VNAV systems, LNAV/VNAV NA below -26°C (-14°F) or above 51°C (124°F). DME/DME RNP-0.3 NA. When local altimeter setting not received, use Cowley/Lovell/Byron altimeter setting and increase LPV DA to 4253 feet and LNAV/VNAV DA to 4327 feet. Increase LPV and LNAV/VNAV visibility all Cats  $\frac{3}{8}$  SM. Increase all MDAs 100 feet and LNAV visibility Cat B  $\frac{1}{4}$  SM, Cats C/D  $\frac{1}{2}$  SM and Circling Cat B  $\frac{1}{4}$  SM. VDP NA with Cowley/Lovell/Byron altimeter setting.

**MISSED APPROACH:** Climb to 4400 then climbing left turn to 9000 direct CRANY and hold, continue climb-in-hold 9000.

ASOS <b>135.325</b>	SALT LAKE CENTER <b>127.75 351.9</b>	CTAF <b>122.9</b>
------------------------	---	----------------------



ELEV 3942	TDZE 3916
-----------	-----------



CATEGORY	A	B	C	D
LPV DA	4166- $\frac{3}{4}$		250 (300- $\frac{3}{4}$ )	
LNAV/VNAV DA	4240-1		324 (300-1)	
LNAV MDA	4640-1 724 (700-1)		4640-2 724 (700-2)	
<b>C</b> CIRCLING	4640-1 698 (700-1)	4700-1 $\frac{1}{4}$ 758 (800-1 $\frac{1}{4}$ )	5320-3 1378 (1400-3)	5460-3 1518 (1600-3)

NW-1, 28 NOV 2024 to 26 DEC 2024

NW-1, 28 NOV 2024 to 26 DEC 2024