

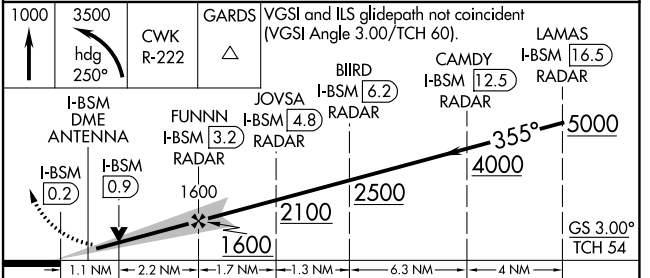
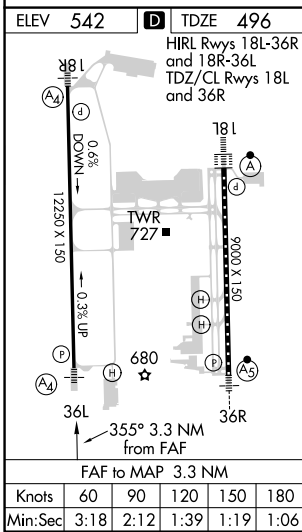
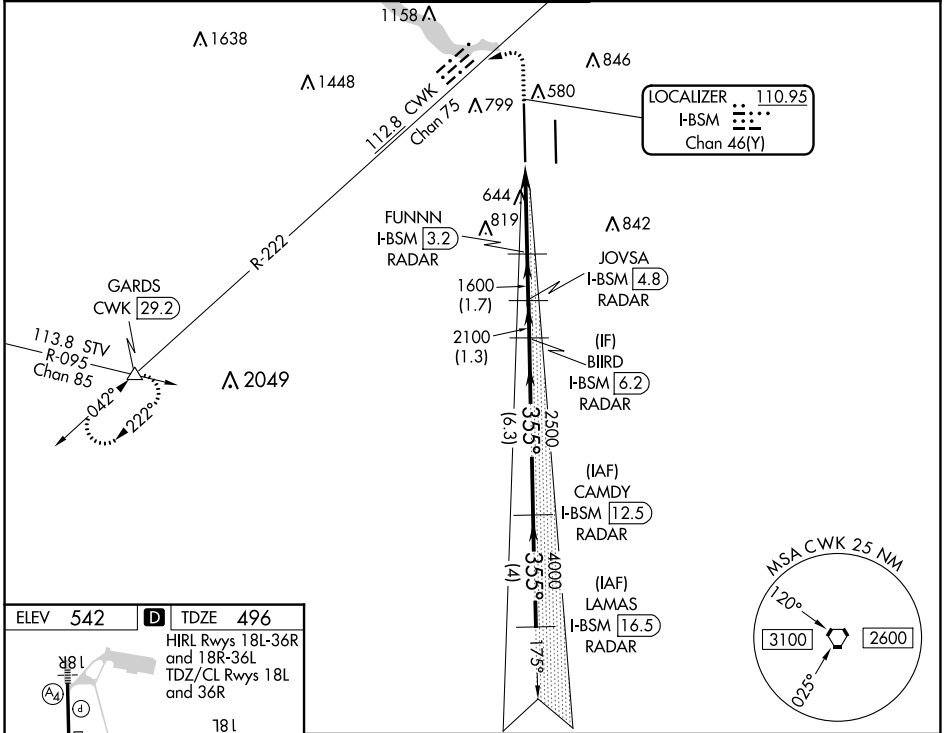
LOC/DME I-BSM <b>110.95</b> Chan <b>46(Y)</b>	APP CRS <b>355°</b>	Rwy Idg <b>12250</b> TDZE <b>496</b> Apt Elev <b>542</b>
---	------------------------	--

# ILS or LOC RWY 36L

AUSTIN-BERGSTROM INTL (AUS)

DME or RADAR required.		MALS ≡ (A4)	MISSED APPROACH: Climb to 1000 then climbing left turn to 3500 on heading 250° and CWK VORTAC R-222 to GARDS INT/CWK 29.2 DME and hold.		
<p>Simultaneous approach authorized. For inop ALS, increase S-LOC 36L Cats C/D/E visibility to RVR 6000. Inop table does not apply to S-ILS 36L all Cats.</p>					

D-ATIS <b>124.4</b>	AUSTIN APP CON <b>127.225 317.65</b> <b>120.875 270.25</b> (SOUTH) <b>119.0 370.85</b> (WEST)	AUSTIN TOWER <b>121.0 281.5</b>	GND CON <b>121.9 348.6</b>	CLNC DEL <b>125.5 263.0</b>	CPDLC
------------------------	--	------------------------------------	-------------------------------	--------------------------------	-------



CATEGORY	A	B	C	D	E
S-ILS 36L	696/40 200 (200-¾)				
S-LOC 36L	900/40	404 (400-¾)	900/50 404 (400-1)		

SC-3, 28 NOV 2024 to 26 DEC 2024

SC-3, 28 NOV 2024 to 26 DEC 2024