

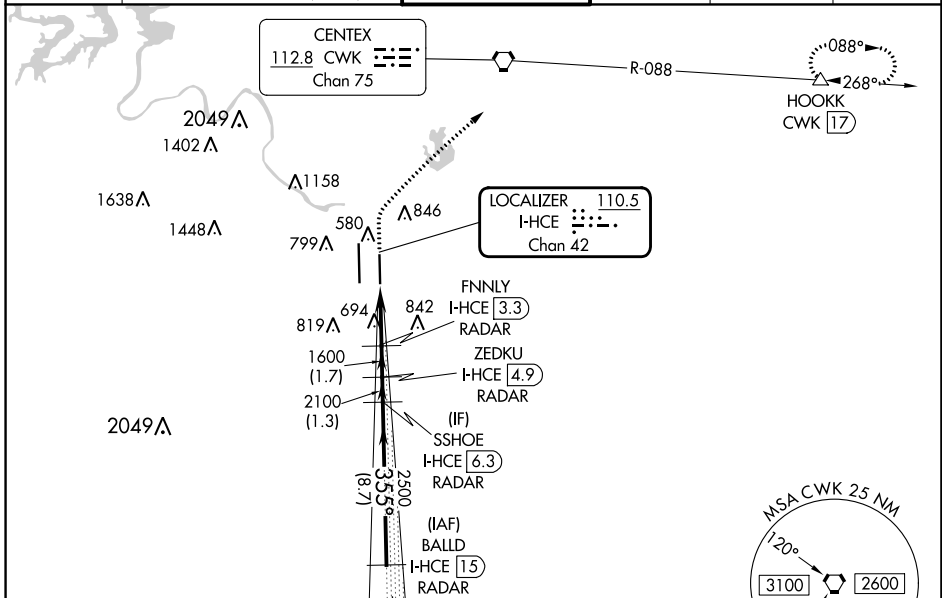
LOC/DME I-HCE 110.5 Chan 42	APP CRS 355°	Rwy Idg 9000 TDZE 480 Apt Elev 542
---	------------------------	---

ILS or LOC RWY 36R

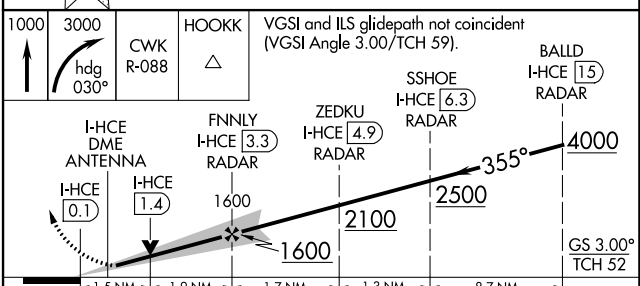
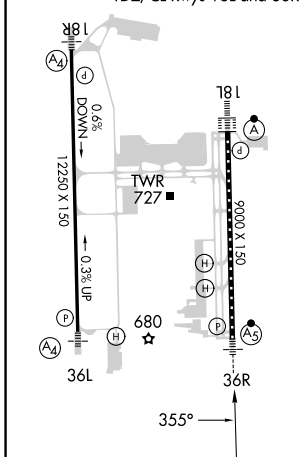
AUSTIN-BERGSTROM INTL (AUS)

DME required. RADAR required for procedure entry.		MALSR 	MISSED APPROACH: Climb to 1000 then climbing right turn to 3000 on heading 030° and CWK VORTAC R-088 to HOOKK/CWK 17 DME and hold.		
Simultaneous approach authorized. For inop ALS, increase S-ILS 36R Cat E visibility to RVR 4000, S-LOC 36R Cat C/D/E visibility to 1/2 SM.					

D-ATIS 124.4	AUSTIN APP CON 127.225 317.65 (EAST) 120.875 270.25 (SOUTH) 119.0 370.85 (WEST)	AUSTIN TOWER 121.0 281.5	GND CON 121.9 348.6	CLNC DEL 125.5 263.0	CPDLC
------------------------	---	------------------------------------	-------------------------------	--------------------------------	-------



ELEV 542	D TDZE 480
HIRL Rwy's 18R-36L and 18L-36R TDZ/CL Rwy's 18L and 36R	



CATEGORY	A	B	C	D	E
S-ILS 36R	680/18 200 (200-1/2)				
S-LOC 36R	1000/24	520 (500-1/2)	1000/55	520 (500-1)	
C CIRCLING	1040-1 498 (500-1)	1120-1 578 (600-1)	1200-1 3/4 658 (700-1 1/4)	1200-2 658 (700-2)	NA

SC-3, 28 NOV 2024 to 26 DEC 2024

SC-3, 28 NOV 2024 to 26 DEC 2024