

WAAS CH 62829 W18A	APP CRS 175°	Rwy Idg TDZE 492 Apt Elev 542	9000
--	------------------------	---	-------------

RNAV (GPS) Y RWY 18L

AUSTIN-BERGSTROM INTL (AUS)

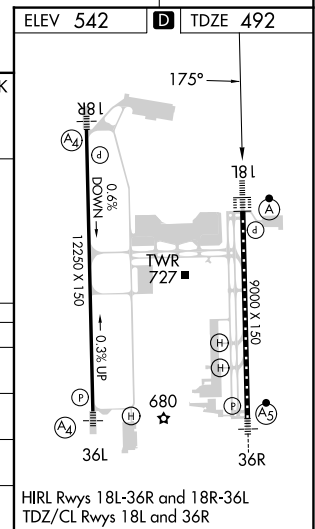
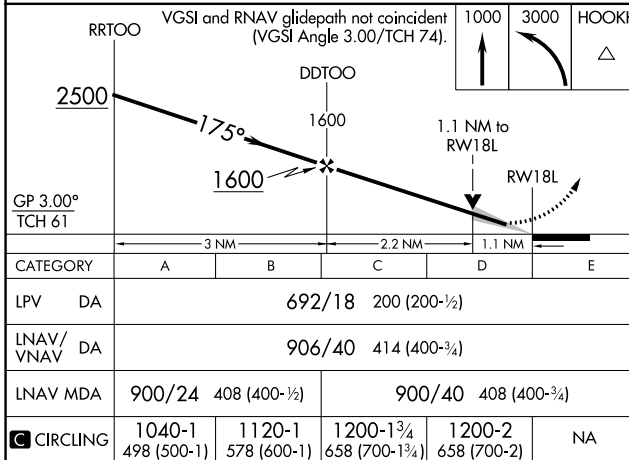
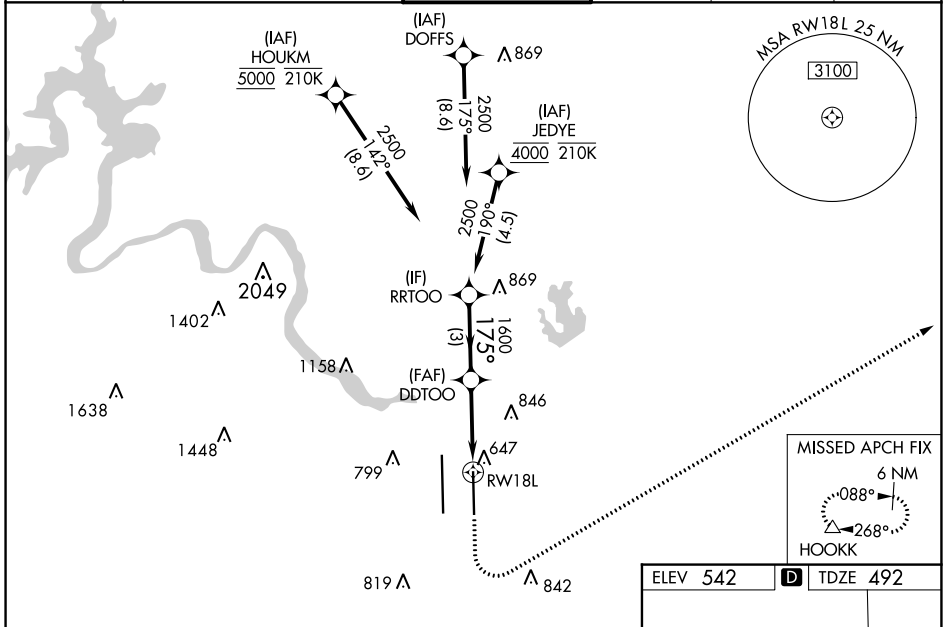
RNP APCH-GPS.

Simultaneous approach authorized. LNAV procedure NA during simultaneous operations. For uncompensated Baro-VNAV systems, LNAV/VNAV NA below -5°C or above 54°C. Use of FD or AP required during simultaneous operations. For inop ALS, increase LPV Cat E visibility to RVR 4000, LNAV/VNAV visibility all Cats to RVR 6000, and LNAV visibility Cats C, D, and E to RVR 6000.

ALSF-2

MISSED APPROACH: Climb to 1000 then climbing left turn to 3000 direct HOOKK and hold.

D-ATIS 124.4	AUSTIN APP CON 127.225 317.65 (EAST) 120.875 270.25 (SOUTH) 119.0 370.85 (WEST)	AUSTIN TOWER 121.0 281.5	GND CON 121.9 348.6	CLNC DEL 125.5 263.0	CPDLC
------------------------	---	------------------------------------	-------------------------------	--------------------------------	-------



SC-3, 28 NOV 2024 to 26 DEC 2024

SC-3, 28 NOV 2024 to 26 DEC 2024