

LOC/DME I-SNQG <b>110.3</b> Chan 40	APP CRS <b>164°</b>	Rwy Idg <b>11901</b> TDZE <b>432</b> Apt Elev <b>432</b>
---	------------------------	--

# ILS RWY 16L (CAT II & III)

## SEATTLE-TACOMA INTL (SEA)

DME or RADAR required. RNP APCH-GPS, from GRIFO.

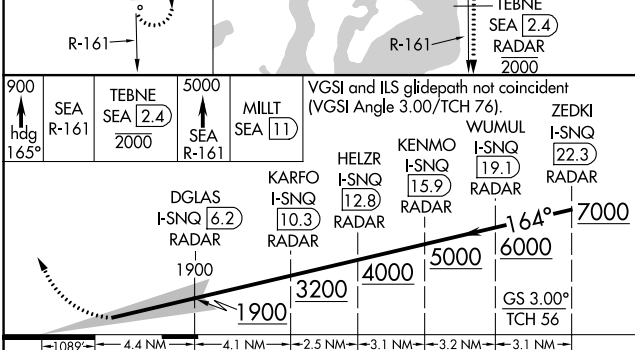
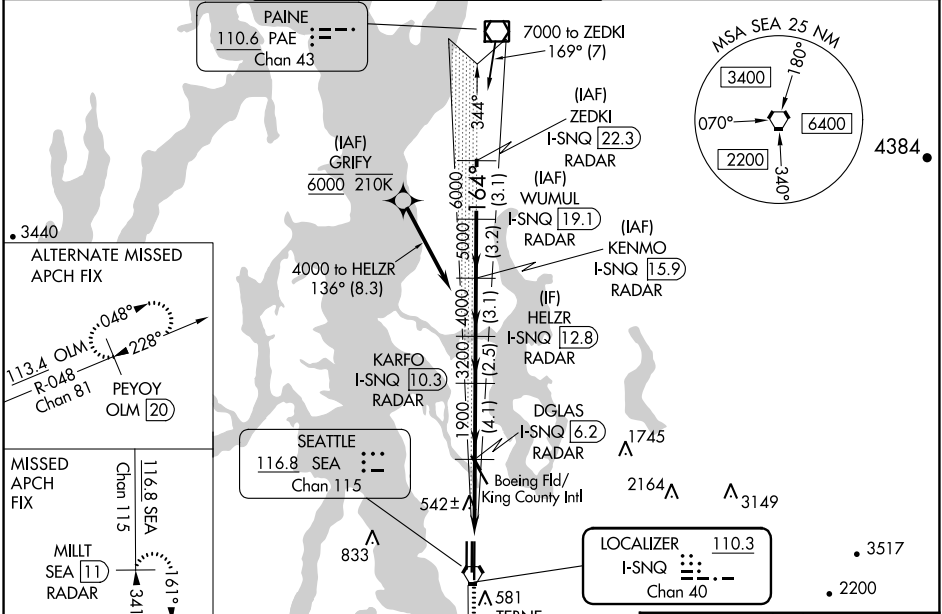
Simultaneous approach authorized. Cat II: RVR 1000 authorized with specific OPSPEC, MSPEC, or LOA approval and use of Autoland or HUD to touchdown.

ALSIF-2



MISSED APPROACH: Climb to 900 on heading 165° then on SEA VORTAC R-161 to cross TEBNE/SEA 2.4 DME/RADAR at or below 2000 then climb to 5000 on SEA VORTAC R-161 to MILLT/SEA 11 DME/RADAR and hold, continue climb-in-hold to 5000.

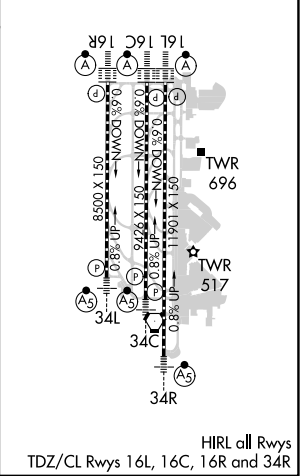
D-ATIS <b>118.0</b>	SEATTLE APP CON <b>133.65 273.45</b>	SEATTLE TOWER <b>119.9 239.3</b> (Rwys 16L, 16C, 34C, 34R) <b>120.95 239.3</b> (Rwys 16R, 34L)	GND CON <b>121.7</b>	CLNC DEL <b>128.0</b>	CPDLC
------------------------	---	--	-------------------------	--------------------------	-------



CATEGORY	A	B	C	D
S-ILS 16L	NA	CAT II RA 176/12 100 DA 532		
S-ILS 16L	NA	CAT III RVR 03		

**CATEGORY II & III ILS - SPECIAL AIRCREW & AIRCRAFT CERTIFICATION REQUIRED**

ELEV 432	<b>D</b> TDZE 432
----------	-------------------



NW-1, 28 NOV 2024 to 26 DEC 2024

NW-1, 28 NOV 2024 to 26 DEC 2024