

WAAS CH 49220 W02A	APP CRS 016°	Rwy Idg 7002 TDZE 2 Apt Elev 4
--	------------------------	---

RNAV (GPS) RWY 2

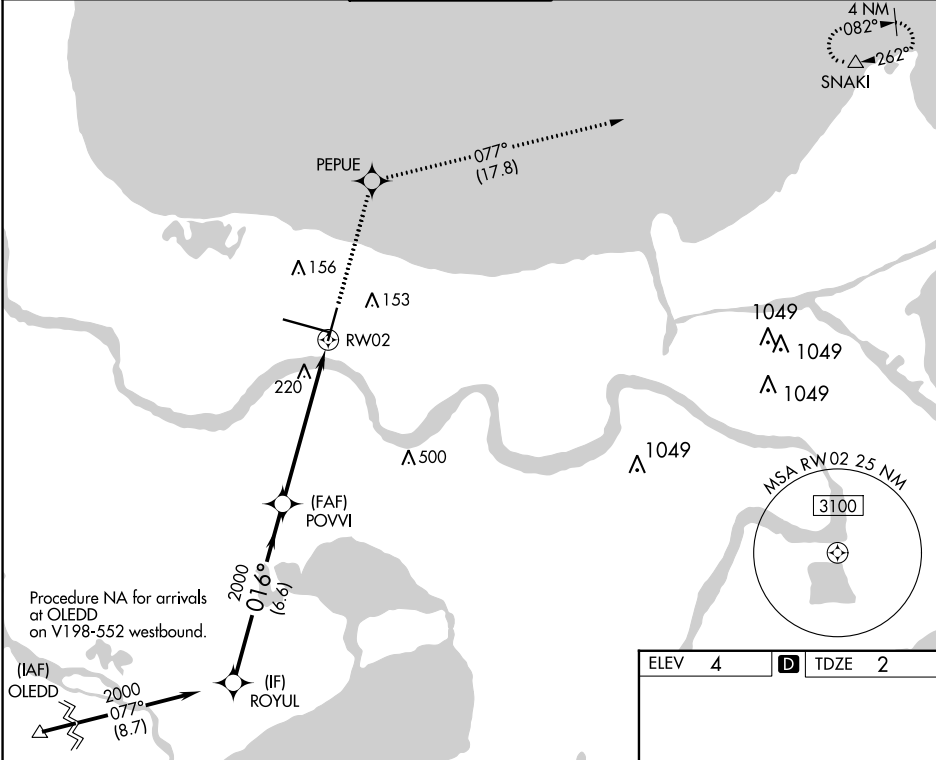
LOUIS ARMSTRONG NEW ORLEANS INTL (MSY)

RNP APCH - GPS.

MISSED APPROACH: Climb to 3000 direct PEPUE and on track 077° to SNAKI and hold.

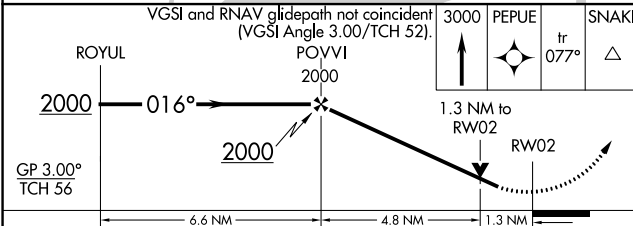
▼ Rwy 2 helicopter visibility reduction below RVR 4000 NA. For uncompensated Baro-VNAV systems, LNAV/VNAV NA below 0°C or above 54°C.

D-ATIS 127.55	NEW ORLEANS APP CON WEST 125.5 350.35 EAST 133.15 290.3	NEW ORLEANS TOWER 119.5 254.3	GND CON 121.9 273.525	CLNC DEL 120.925	CPDLC
-------------------------	---	---	---------------------------------	----------------------------	-------



SC-4, 28 NOV 2024 to 26 DEC 2024

SC-4, 28 NOV 2024 to 26 DEC 2024



ELEV 4	D TDZE 2
--------	-----------------

CATEGORY	A	B	C	D
LPV DA		398/60	396 (400-1¼)	
LNAV/VNAV DA		379/55	377 (400-1)	
LNAV MDA	480/55	478 (500-1)	480-1⅜ 478 (500-1⅝)	
C CIRCLING	520-1	516 (600-1)	580-1½ 576 (600-½)	580-2 576 (600-2)

