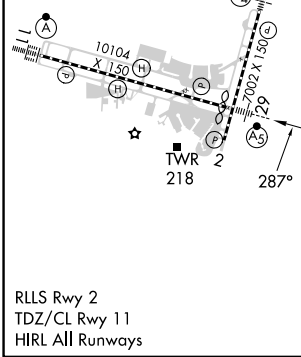
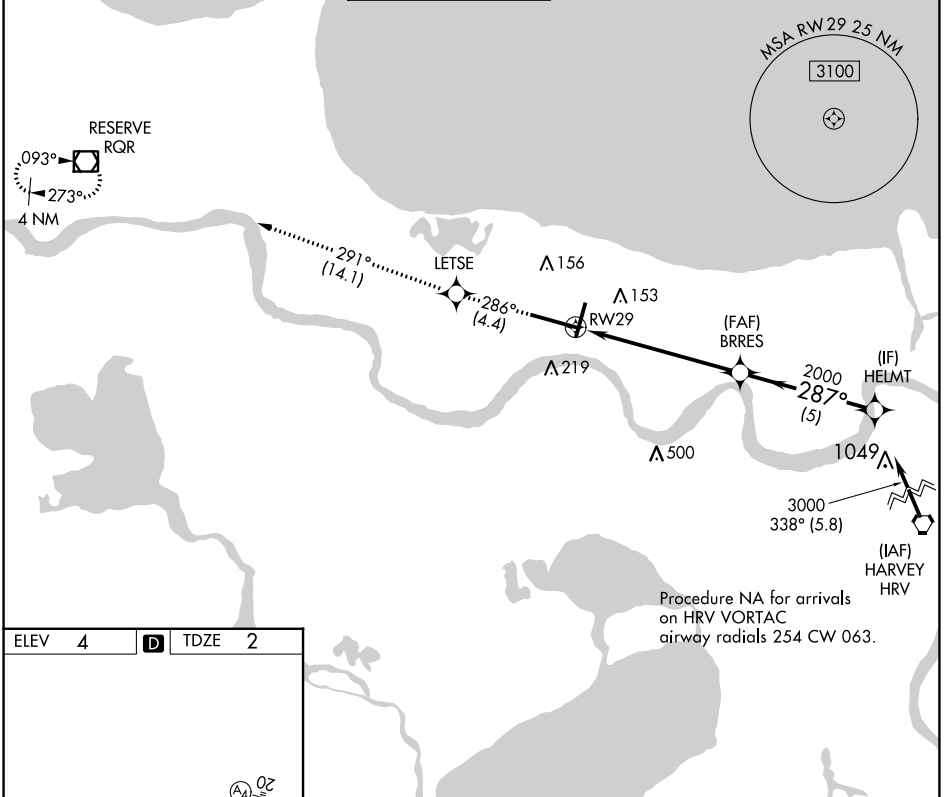


APP CRS	Rwy Idg	9800
287°	TDZE	2
	Apt Elev	4

RNAV (RNP) Z RWY 29

LOUIS ARMSTRONG NEW ORLEANS INTL (MSY)

<p>For uncompensated Baro-VNAV systems, procedure NA below -1°C (31°F) or above 54°C (130°F). GPS Required.</p>		<p>MALSRL</p>	<p>MISSED APPROACH: Climb to 3000 on track 286° to LETSE and on track 291° to RQR VOR/DME and hold.</p>		
D-ATIS	NEW ORLEANS APP CON	NEW ORLEANS TOWER	GND CON	CLNC DEL	CPDLC
127.55	WEST 125.5 350.35 EAST 133.15 290.3	119.5 254.3	121.9 273.525	120.925	



3000	↑	tr 286°	LETSE	tr 291°	RQR	VGSI and RNAV glidepath not coincident (VGSI Angle 3.00/TCH 68).
						HELMT 3000
			RW29	BRRES 2000		GP 3.00° TCH 53
			6.1 NM	5 NM		
CATEGORY	A	B	C	D		
RNP 0.30 DA		382/40	380 (400-¾)			

AUTHORIZATION REQUIRED

SC-4, 28 NOV 2024 to 26 DEC 2024

SC-4, 28 NOV 2024 to 26 DEC 2024