


LOC I-TUN 109.9	APP CRS 274°	Rwy Idg TDZE Apt Elev	7201 770 782
---------------------------	------------------------	-----------------------------	---

ILS or LOC RWY 27

BISHOP INTL (F'NT)

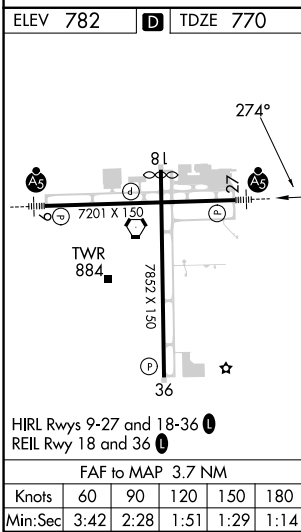
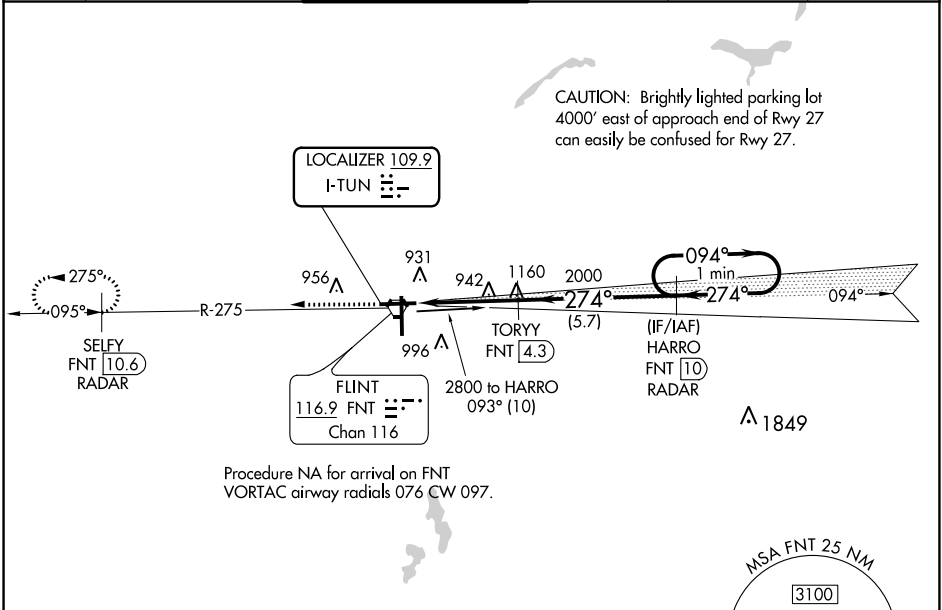
DME or RADAR required for procedure entry. DME or RADAR required.

▽ DME from FNT VORTAC. Simultaneous reception of I-TUN and FNT DME required. For inop ALS, increase S-LOC 27 Cat A/B visibility to 1 SM, and Cat C/D visibility to 1½ SM.

MALSR 

MISSED APPROACH: Climb to 2600 on FNT VORTAC R-275 direct SELFY/FNT VORTAC 10.6 DME/RADAR and hold.

ATIS 133.15	GREAT LAKES APP CON ★ 118.8 257.9	FLINT TOWER ★ 126.3 (CTAF) 0257.9	GND CON 121.9	CLNC DEL 121.75	UNICOM 122.95
-----------------------	---	---	-------------------------	---------------------------	-------------------------



2600	FNT R-275	SELY FNT 10.6 RADAR	TORYY FNT 4.3	HARRO FNT 10 RADAR	One Minute Holding Pattern
*LOC only.					
FNT 0.6		*FNT 2		2000	
1.4 NM		2.3 NM		5.7 NM	
CATEGORY	A	B	C	D	
S-ILS 27	970-½		200 (200-½)		
S-LOC 27	1260-½		490 (500-½)		1260-1 490 (500-1)
C CIRCLING	1260-1 478 (500-1)		1300-1 518 (600-1)		1300-1½ 518 (600-1½) 1520-2¼ 738 (800-2¼)

GS 3.00° TCH 56

EC-1, 28 NOV 2024 to 26 DEC 2024

EC-1, 28 NOV 2024 to 26 DEC 2024