

(BANGZ.BANGZ1) 22139

AL-625 (FAA)

Arrival Routes

BANGZ ONE ARRIVAL (RNAV)

ST PETERSBURG-CLEARWATER, FLORIDA

RNAV 1 - DME/DME/IRU or GPS.

RADAR required.

TAMPA APP CON

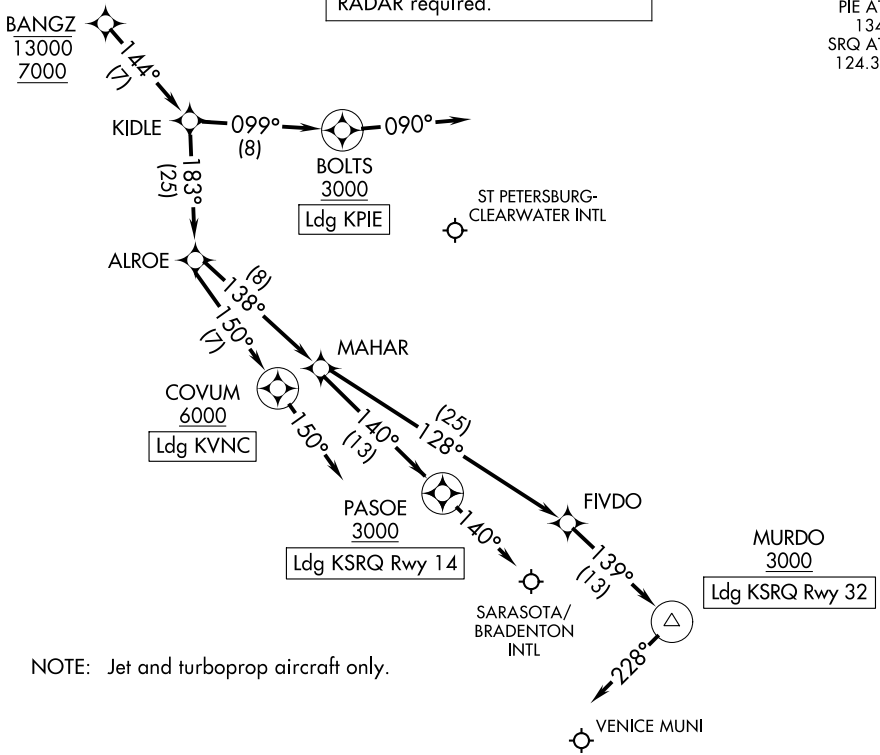
118.8 239.3

PIE ATIS

134.5

SRQ ATIS

124.375



NOTE: Jet and turboprop aircraft only.

NOTE: Chart not to scale.

ARRIVAL ROUTE DESCRIPTION

LANDING KSRQ RUNWAY 14: From BANGZ on track 144° to KIDLE, then on track 183° to ALROE, then on track 138° to MAHAR, then on track 140° to cross PASOE at or above 3000, then on heading 140° or as assigned by ATC. Expect RADAR vectors to final approach course.

LANDING KSRQ RUNWAY 32: From BANGZ on track 144° to KIDLE, then on track 183° to ALROE, then on track 138° to MAHAR, then on track 128° to FIVDO, then on track 139° to cross MURDO at or above 3000, then on heading 228° or as assigned by ATC. Expect RADAR vectors to final approach course.

LANDING KPIE: From BANGZ on track 144° to KIDLE, then on track 099° to cross BOLTS at or above 3000, then on heading 090° or as assigned by ATC. Expect RADAR vectors to final approach course.

LANDING KVNC: From BANGZ on track 144° to KIDLE, then on track 183° to ALROE, then on track 150° to cross COVUM at or above 6000, then on track 150°. Expect RADAR vectors to final approach course.

BANGZ ONE ARRIVAL (RNAV)

ST PETERSBURG-CLEARWATER, FLORIDA

(BANGZ.BANGZ1) 19MAY22

Arrival Routes

SE-3, 28 NOV 2024 to 26 DEC 2024

SE-3, 28 NOV 2024 to 26 DEC 2024