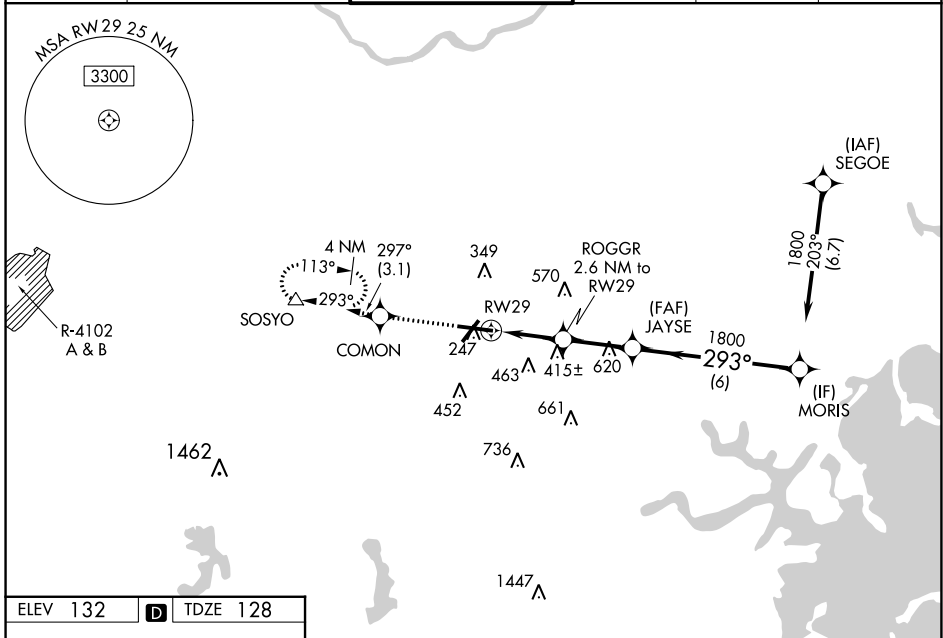


WAAS CH <b>86612</b> <b>W29A</b>	APP CRS <b>293°</b>	Rwy Idg <b>7011</b> TDZE <b>128</b> Apt Elev <b>132</b>
--	------------------------	---

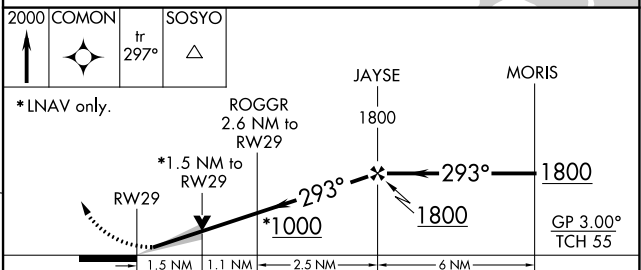
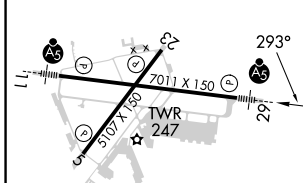
# RNAV (GPS) Z RWY 29

LAURENCE G HANSCOM FLD (BED)

RNP APCH		<p>For uncompensated Baro-VNAV systems, LNAV/VNAV NA below -16°C (4°F) or above 54°C (130°F). Baro-VNAV and VDP NA with Boston altimeter setting. When local altimeter setting not received, use Boston altimeter setting; increase LPV DA to 377 feet, LNAV/VNAV DA to 663 feet; increase all MDAs 60 feet and LNAV Cats C and D, and Circling Cat D visibility ¼ SM. For inop ALS, increase LNAV/VNAV all Cats visibility and LNAV Cat C/D to 1 ½ SM. For inop ALS when using Boston altimeter setting, increase LNAV/VNAV all Cats visibility to 1 ½ SM and LNAV Cat C/D to 1 ½ SM.</p>		<p>MALSRL MISSED APPROACH: Climb to 2000 direct COMON and on track 297° to SOSYO and hold.</p>	
ATIS <b>124.6</b>	BOSTON APP CON <b>124.4 279.6</b>	HANSCOM TOWER ★ <b>118.5 (CTAF) 0 257.2</b>	GND CON <b>121.7</b>	CLNC DEL <b>121.85</b>	UNICOM <b>122.95</b>



ELEV 132	<b>D</b>	TDZE 128
----------	----------	----------



CATEGORY	A	B	C	D
LPV DA	328-½		200 (200-½)	
LNAV/VNAV DA	614-1 ⅛		486 (500-1 ⅛)	
LNAV MDA	640-½	512 (600-½)	640-1	512 (600-1)
<b>C</b> CIRCLING	720-1	588 (600-1)	880-2 ¼ 748 (800-2 ¼)	920-2 ½ 788 (800-2 ½)

MIRL Rwy 5-23  
HIRL Rwy 11-29  
REIL Rwy 5 and 23

NE-1, 28 NOV 2024 to 26 DEC 2024

NE-1, 28 NOV 2024 to 26 DEC 2024