


VOR/DME or TACAN Z RWY 4

NEW ORLEANS NAS JRB
(ALVIN CALLENDER FLD) (KNBG)

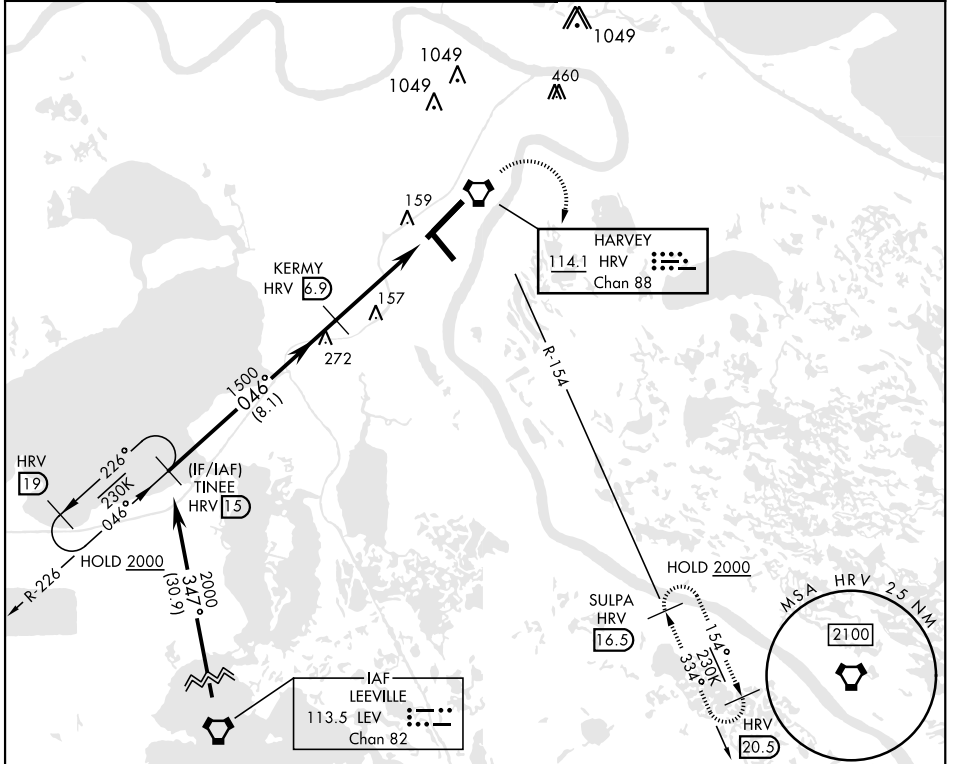
VORTAC HRV 114.1 Chan 88	APCH CRS 046°	Rwy ldg TDZE Arprt Elev 10,000 -2 2
--	-------------------------	---

AL-630 [USN]

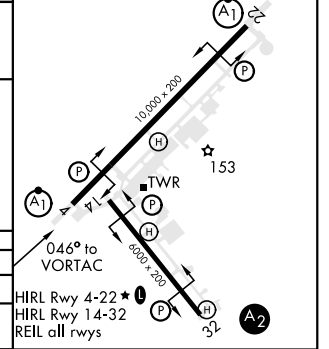
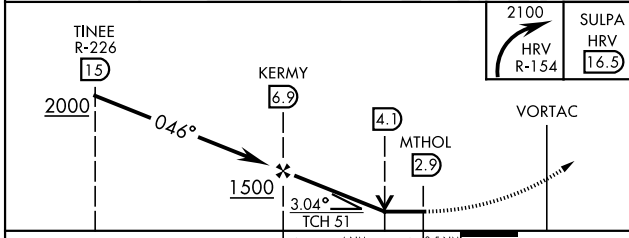
RNAV or ATC RADAR monitoring required.

ALSF-1  MISSED APPROACH: Execute climbing right turn to 2100, intercept HRV R-154 to SULPA. Cross 10 DME at 2000. Hold at SULPA.

ATIS ★ 279.55	APP CON 123.85 256.9	NAVY NEW ORLEANS TOWER ★ 0 123.8 340.2 (CTAF)	GND CON 121.6 270.35	CLNC DEL 128.35 263.0	ASR/ PAR
-------------------------	--------------------------------	---	--------------------------------	---------------------------------	-------------



EMERG SAFE ALT 100 NM 3000	ELEV 2	TDZE -2
----------------------------	---------------	----------------



CATEGORY	A	B	C	D
S-4 *	600-½ 602 (600-½)	600-1 602 (600-1)	600-1¾ 602 (600-1¾)	600-2 602 (600-2)
CIRCLING	640-1 638 (700-1)	640-1 638 (700-1)	640-1¾ 638 (700-1¾)	640-2 638 (700-2)

NEW ORLEANS, LOUISIANA 29° 50' N-90° 02' W NEW ORLEANS NAS JRB (KNBG)

Orig 04NOV21

VOR/DME or TACAN Z RWY 4

SC-4, 28 NOV 2024 to 26 DEC 2024

SC-4, 28 NOV 2024 to 26 DEC 2024