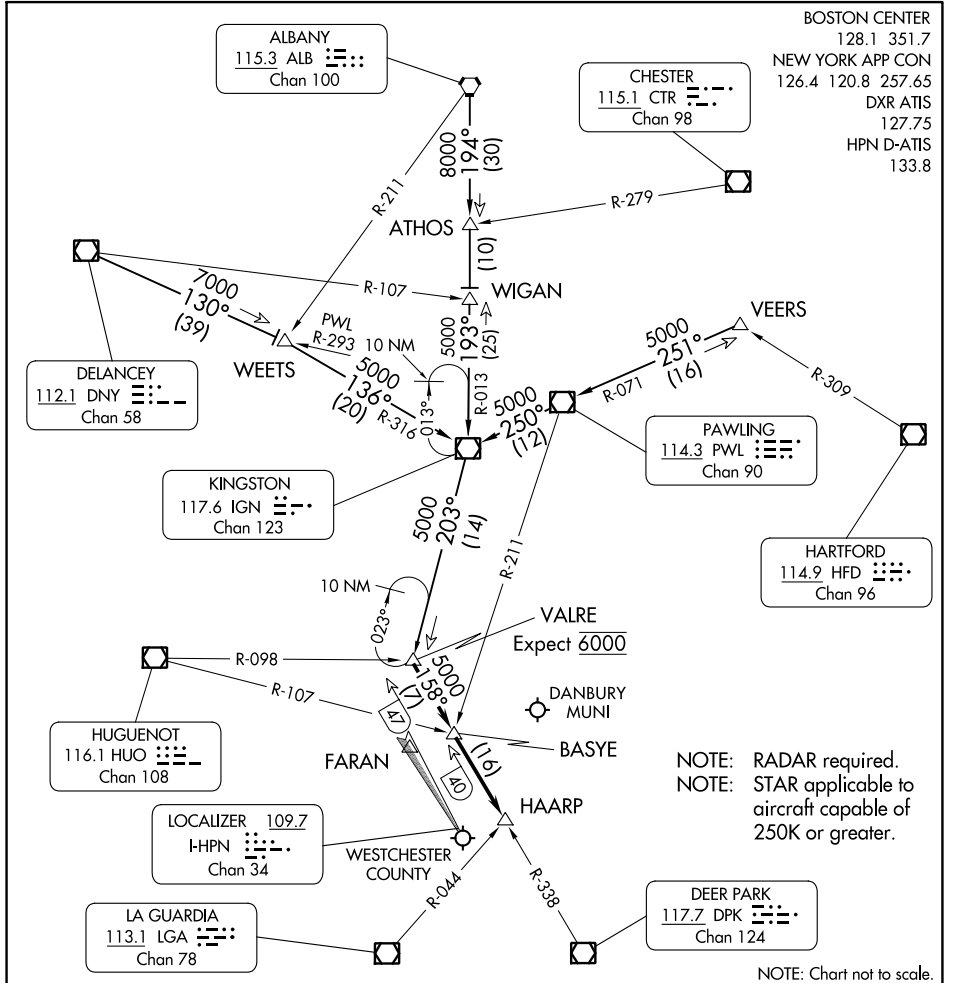


VALRE FIVE ARRIVAL

WHITE PLAINS, NEW YORK



NE-2, 28 NOV 2024 to 26 DEC 2024

NE-2, 28 NOV 2024 to 26 DEC 2024

BOSTON CENTER
128.1 351.7
NEW YORK APP CON
126.4 120.8 257.65
DXR ATIS
127.75
HPN D-ATIS
133.8

NOTE: RADAR required.
NOTE: STAR applicable to aircraft capable of 250K or greater.

NOTE: Chart not to scale.

ARRIVAL ROUTE DESCRIPTION

ALBANY TRANSITION (ALB.VALRE5): From over ALB VORTAC on ALB R-194 to WIGAN INT, then on IGN R-013 to IGN VOR/DME, then on IGN R-203 to VALRE INT. Thence. . . .

DELANCEY TRANSITION (DNY.VALRE5): From over DNY VOR/DME on DNY R-130 to WEETS INT, then on IGN R-316 to IGN VOR/DME, then on IGN R-203 to VALRE INT. Thence. . . .

VEERS TRANSITION (VEERS.VALRE5): From over VEERS INT on PWL R-071 to PWL VOR/DME, then on PWL R-250 to IGN VOR/DME, then on IGN R-203 to VALRE INT. Thence. . . .

. . . .from over VALRE INT on DPK R-338 to BASYE INT, then to HAARP INT. Expect RADAR vectors to final approach course prior to HAARP INT.