

LOC/DME I-ACK <b>109.1</b> Chan <b>28</b>	APP CRS <b>241°</b>	Rwy ldg TDZE Apt Elev <b>6303</b> <b>47</b> <b>47</b>
---	------------------------	--

# ILS or LOC RWY 24

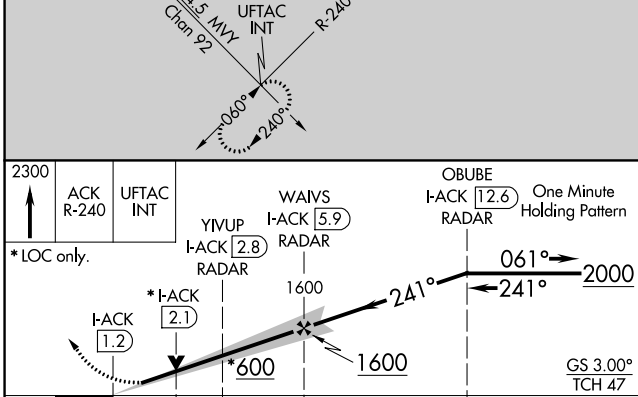
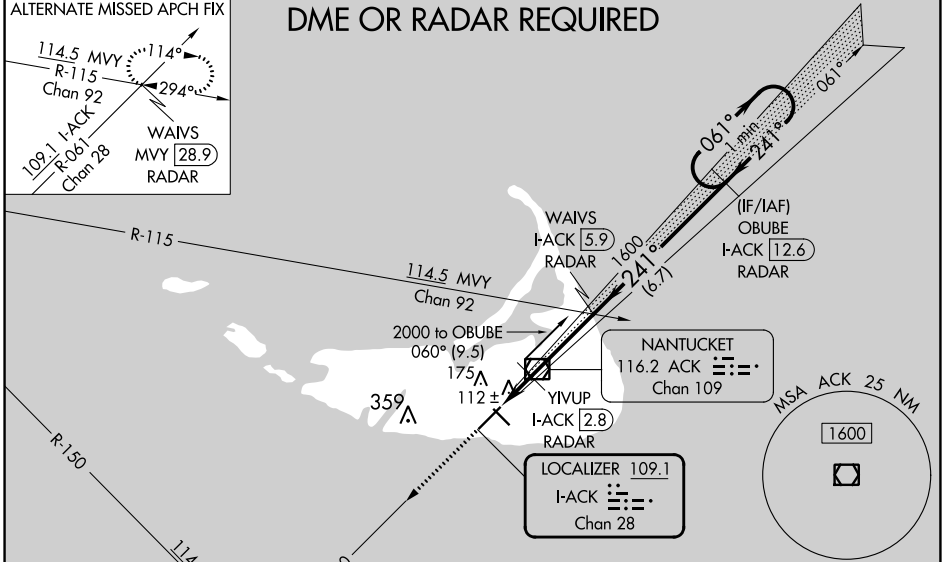
NANTUCKET MEML (ACK)

When local altimeter setting not received, use Hyannis altimeter setting and increase DA to 310 and all MDA 80 feet. Increase S-ILS 24, all Cats, visibility to RVR 2000, S-LOC 24 Cats C/D visibility to RVR 4000 and increase Circling Cats C/D ¼ SM. VDP NA when using Hyannis altimeter setting. For inop SSALR when using the Hyannis altimeter setting, increase S-ILS 24, all Cats, visibility to RVR 4500 and increase S-LOC 24 Cats C/D visibility to RVR 6000.

SSALR

MISSED APPROACH:  
Climb to 2300 on  
ACK VOR/DME R-240  
to UFTAC INT and hold.

ATIS <b>127.5</b>	BOSTON APP CON <b>126.1 318.1</b>	NANTUCKET TOWER ★ <b>118.3 (CTAF) 0</b>	GND CON <b>132.5</b>	CLNC DEL <b>119,375</b>	UNICOM <b>122.95</b>
----------------------	--------------------------------------	--	-------------------------	----------------------------	-------------------------



ELEV 47	<b>D</b>	TDZE 47
---------	----------	---------

TDZ/CL Rwy 24  
HIRL Rwy 6-24 0  
MIRL Rwy 15-33 0  
REIL Rwy 15 and 33

FAF to MAP 4.7 NM					
Knots	60	90	120	150	180
Min:Sec	4:42	3:08	2:21	1:53	1:34

CATEGORY	A	B	C	D
S-ILS 24	247/18 200 (200-½)			
S-LOC 24	380/24	333 (400-½)	380/26	333 (400-½)
CIRCLING	480-1	500-1	720-2	720-2¼
	433 (500-1)	453 (500-1)	673 (700-2)	673 (700-2¼)

NE-1, 28 NOV 2024 to 26 DEC 2024

NE-1, 28 NOV 2024 to 26 DEC 2024