

LOC/DME H-LGU	APP CRS	Rwy Idg	9020
109.15	172°	TDZE	4457
Chan 28(Y)		Apt Elev	4457

ILS or LOC/DME RWY 17

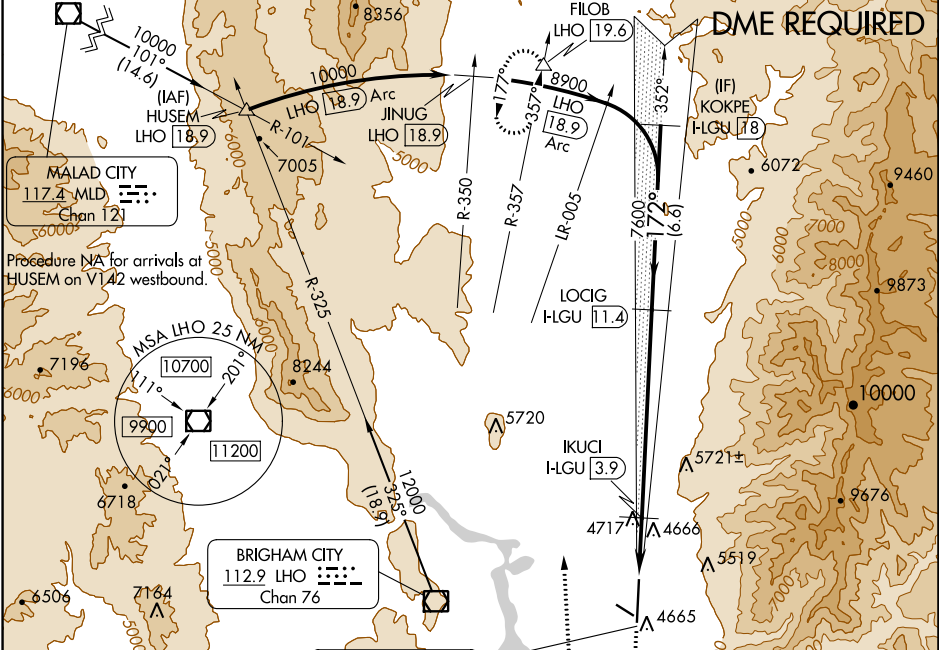
LOGAN-CACHE (LGU)

NA Circling NA east of Rwy 17-35.
NA Circling Rwy 10, 28 NA at night.
-15°C Rwy 17 helicopter visibility reduction below $\frac{3}{4}$ SM NA.

MALSR

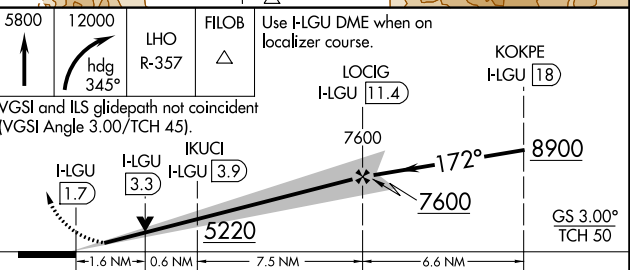
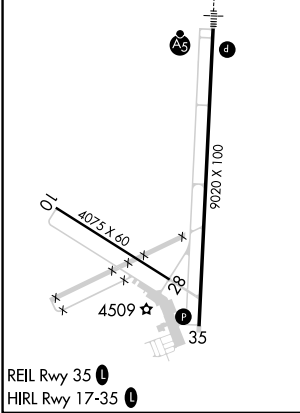

MISSED APPROACH: Climb to 5800 then climbing right turn to 12000 on heading 345° and on LHO VOR/DME R-357 to FIOB INT/LHO 19.6 DME and hold, continue climb-in-hold to 12000.

ASOS	SALT LAKE CENTER	UNICOM
135.275	127.7 354.125	122.8 (CTAF) 0



ELEV 4457	D	TDZE 4457
-----------	----------	-----------

LOCALIZER, 109.15
H-LGU
Chan 28(Y)



CATEGORY	A	B	C	D
S-ILS 17	4771- $\frac{3}{4}$		314 (400- $\frac{3}{4}$)	
S-LOC 17	5020- $\frac{3}{4}$	563 (600- $\frac{3}{4}$)	5020- $\frac{1}{4}$	563 (600- $\frac{1}{4}$)
C CIRCLING	5020-1	563 (600-1)	5080- $\frac{1}{4}$ 623 (700- $\frac{1}{4}$)	5080-2 623 (700-2)

SW-4, 28 NOV 2024 to 26 DEC 2024

SW-4, 28 NOV 2024 to 26 DEC 2024