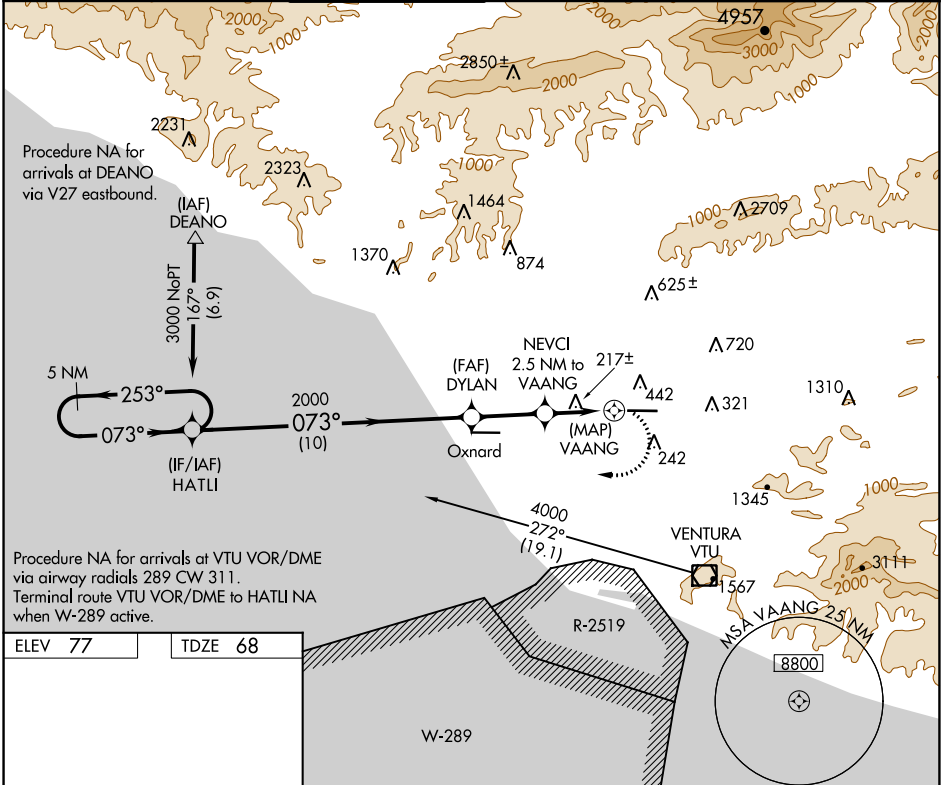


| | | |
|-------------|----------|-------------|
| APP CRS | Rwy Idg | 6013 |
| 073° | TDZE | 68 |
| | Apt Elev | 77 |

RNAV (GPS) RWY 8

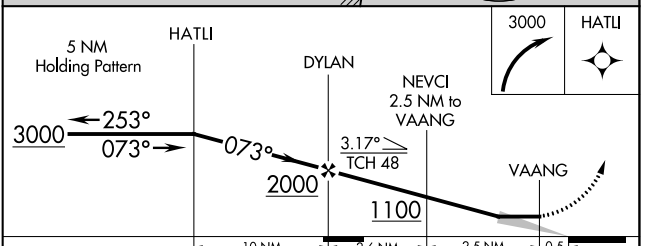
CAMARILLO (CMA)

| | | | | | | |
|--|----------------------|--|--------------|--------------|----------------------|---------------|
| <p>⚠ Circling NA north of Rwy 8-26. DME/DME RNP-0.3 NA. When local altimeter setting not received, use Oxnard altimeter setting and increase all MDA 20 feet.</p> | | <p>MISSED APPROACH: Climbing right turn to 3000 direct HATLI and hold.</p> | | | | |
| ATIS | POINT MUGU APP CON * | CAMARILLO TOWER * | GND CON | CLNC DEL | POINT MUGU CLNC DEL | UNICOM |
| 126.025 | 124.7 335.5 | 128.2 (CTAF) 0 269.4 | 121.8 | 121.8 | 120.75 279.55 | 122.95 |



| | |
|---------|---------|
| ELEV 77 | TDZE 68 |
|---------|---------|

REIL Rws 8 and 26 **Ⓛ**
MIRL Rwy 8-26 **Ⓛ**



| CATEGORY | A | B | C | D |
|----------|----------------------|------------------------|------------------------|-------------------------|
| LNAV MDA | 840-1 772 (800-1) | 840-1¼ 772 (800-1¼) | 840-2½ 772 (800-2½) | 772 (800-2½) |
| CIRCLING | 840-1 763 (800-1) | 840-1¼ 763 (800-1¼) | 840-2½ 763 (800-2½) | 1100-3 1023 (1100-3) |

SW-3, 28 NOV 2024 to 26 DEC 2024

SW-3, 28 NOV 2024 to 26 DEC 2024