

| | | | |
|--|------------------------|------------------|--------------|
| LOC/DME I-GLD 108.9 Chan 26 | APP CRS 305° | Rwy Idg 5499 | TDZE 3654 |
| | | Apt Elev 3657 | |

ILS or LOC RWY 30

RENNER FLD/GOODLAND MUNI (G.LD)

⚠ Circling NA south of runways 5 and 30. ADF required. VDP NA with Burlington, CO altimeter setting. When local altimeter setting not received, use Burlington, CO altimeter setting and increase all DA 144 feet and all MDA 160 feet. Increase S-ILS 30 all Cats visibility to 5/8 mile, S-LOC 30 Cat C/D visibility to 1 1/8 mile, Circling Cat C visibility to 1 1/4 mile, and Cat D to 2 1/4 mile. Circling NA to Rwy 17 and 35. Circling Rwy 5, 23 NA at night.

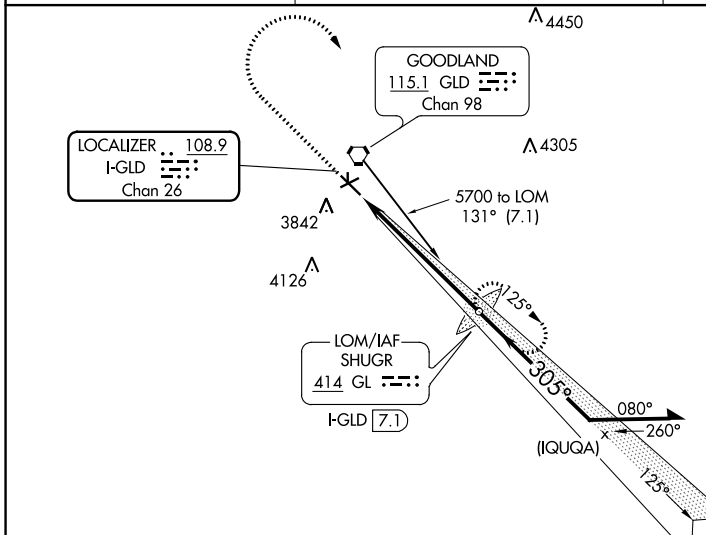
MALSR

MISSED APPROACH: Climb to 4500 then climbing right turn to 5700 direct SHUGR LOM/I-GLD 7.1 DME and hold.

ASOS
121.025

DENVER CENTER
132.7 226.675

UNICOM
122.8 (CTAF)

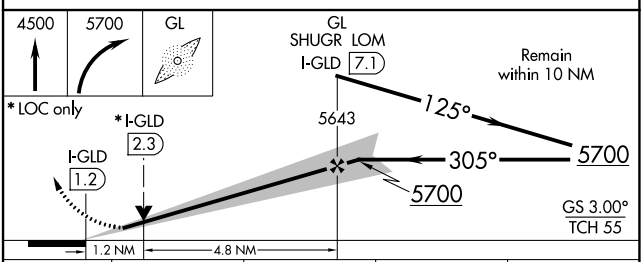
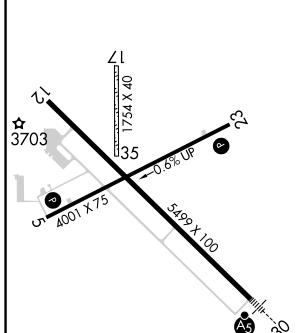


ALTERNATE MISSED APCH FIX

GOODLAND 115.1 GLD
Chan 98

ADF REQUIRED

| | |
|-----------|-----------|
| ELEV 3657 | TDZE 3654 |
|-----------|-----------|



| CATEGORY | A | B | C | D |
|--|------------------------|-----------------------|-------------------------------|-----------------------|
| S-ILS-30 | 3854-1/2 200 (200-1/2) | | | |
| S-LOC-30 | 4100-1/2 | 446 (500-1/2) | 4100-7/8 | 446 (500-7/8) |
| <input checked="" type="checkbox"/> CIRCLING | 4100-1 443 (500-1) | 4120-1 463 (500-1) | 4120-1 1/2 463 (500-1 1/2) | 4240-2 583 (600-2) |