

LOC/DME I-RDD <b>108.7</b> Chan 24	APP CRS <b>166°</b>	Rwy Idg <b>7003</b> TDZE <b>505</b> Apt Elev <b>505</b>
--	------------------------	---

# LOC BC RWY 16

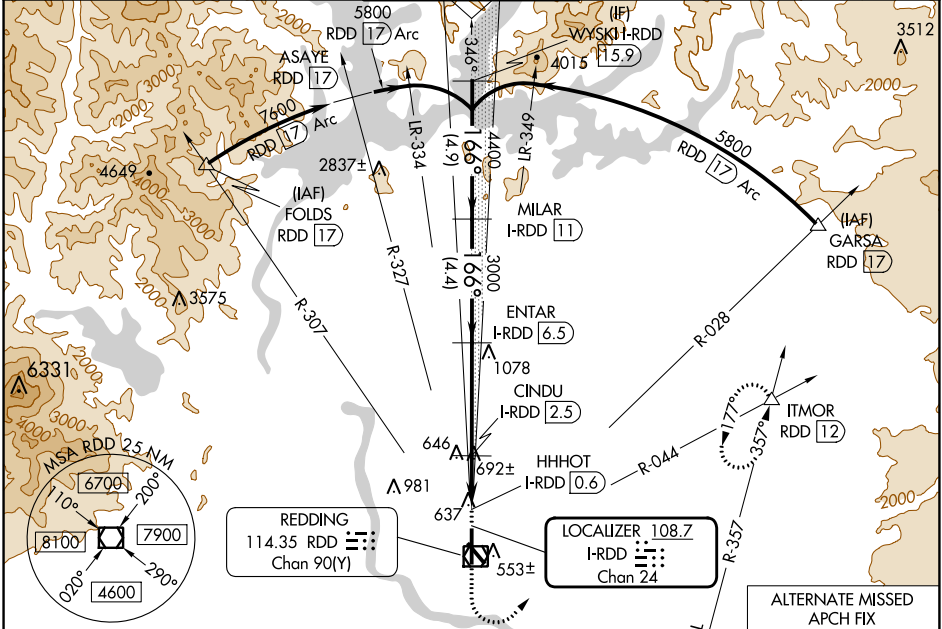
REDDING RGNL (RDD)

DME required.

Rwy 16 helicopter visibility reduction below 3/4 SM NA.

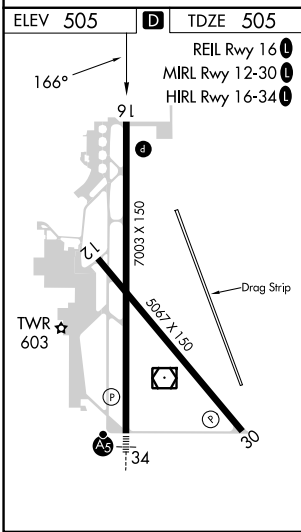
MISSED APPROACH: Climb to 2000 then climbing left turn to 5000 on heading 015° and RDD VOR/DME R-044 to ITMOR INT/RDD 12 DME and hold, continue climb-in-hold to 5000.

ATIS <b>124.1</b>	OAKLAND CENTER <b>132.2 350.3</b>	REDDING TOWER * <b>119.8(CTAF) 269.25</b>	GND CON <b>121.7</b>	UNICOM <b>122.95</b>
----------------------	--------------------------------------	--	-------------------------	-------------------------



SW-2, 28 NOV 2024 to 26 DEC 2024

SW-2, 28 NOV 2024 to 26 DEC 2024



Disregard glideslope indications.

2000	5000	RDD R-044	ITMOR △	WYSKI I-RDD 15.9
↑	hdg 015°			
				MILAR I-RDD 11
		CINDU I-RDD 2.5	ENTAR I-RDD 6.5	4400
		HHHOT I-RDD 0.6	3.43° TCH 55	3000
				1500

Use I-RDD DME when on the localizer course.

	0.8	0.6	1.3 NM	4 NM	4.4 NM	4.9 NM	
CATEGORY	A		B	C		D	
S-16	960-1 455 (500-1)		960-1 3/8	455 (500-1 3/8)			
CIRCLING	960-1 455 (500-1)	1000-1 495 (500-1)	1120-1 3/4 615 (700-1 3/4)	1340-2 3/4 835 (900-2 3/4)			