

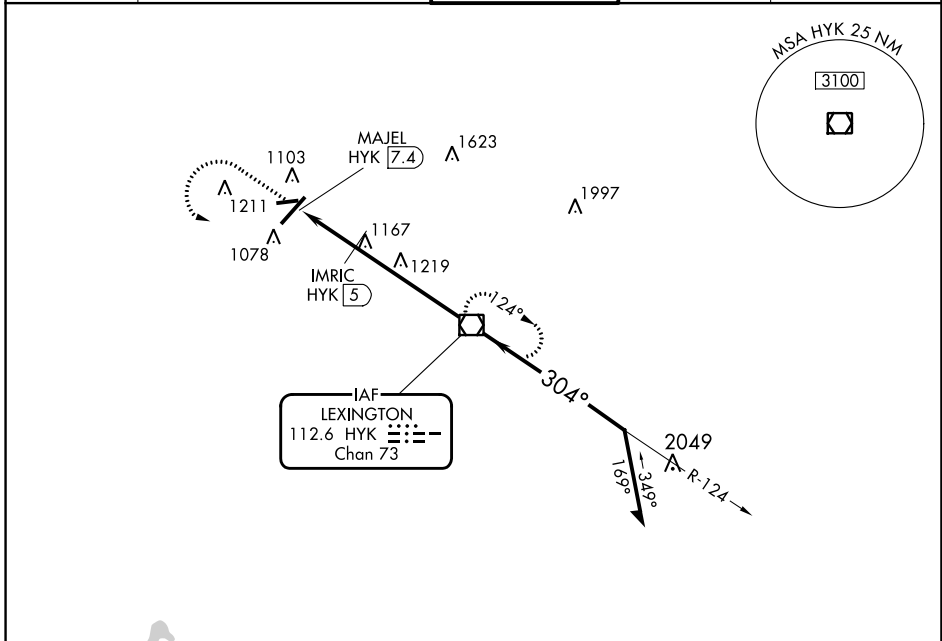
VOR/DME HYK	APP CRS	Rwy Idg TDZE	N/A
112.6	304°	Apt Elev	979
Chan 73			

VOR-A BLUE GRASS (LEX)

⚠ When local altimeter setting not received, use Frankfort altimeter setting and increase all MDAs 80 feet and visibility Cats C and D ¼ SM.

⚠ MISSED APPROACH: Climb to 3100 then left turn direct HYK VOR/DME and hold.

ATIS 126.3	LEXINGTON APP CON 120.15 259.3 120.75 298.9 (040°-220°) (221°-039°)	LEXINGTON TOWER 119.1 257.8	GND CON 121.9	CLNC DEL 132.35
----------------------	--	---------------------------------------	-------------------------	---------------------------



SE-1, 28 NOV 2024 to 26 DEC 2024

SE-1, 28 NOV 2024 to 26 DEC 2024



ELEV 979 **D**

TDZ/CL Rwy 4
REIL Rwys 9, 22 and 27
HIRL Rwy 4-22
MIRL Rwy 9-27

FAF to MAP 7.4 NM

Knots	60	90	120	150	180
Min:Seq	7:24	4:56	3:42	2:58	2:28

3100	HYK	HYK VOR/DME	Remain within 10 NM
↑	↻	□	
MAJEL HYK 7.4	IMRIC HYK 5	3100	124°
1540*	304°	3100	304°
*1620 when using Frankfort altimeter setting.			

CATEGORY	A	B	C	D
C CIRCLING	1540-1	561 (600-1)	1540-1½ 561 (600-1½)	1600-2 621 (700-2)
IMRIC DME FIX MINIMUMS				
C CIRCLING	1460-1	481 (500-1)	1520-1½ 541 (600-1½)	1600-2 621 (700-2)