


| | | |
|---------------------------|------------------------|-----------------|
| LOC I-ONP 111.5 | APP CRS 162° | Rwy ldg 5398 |
| | | TDZE 152 |
| | | Apt Elev 160 |

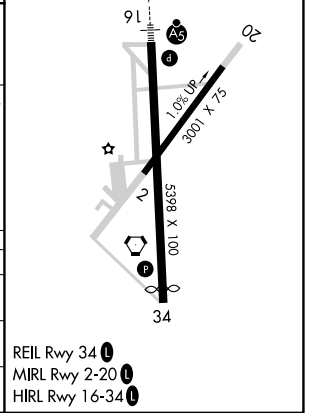
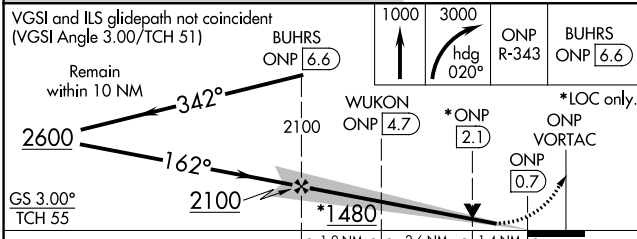
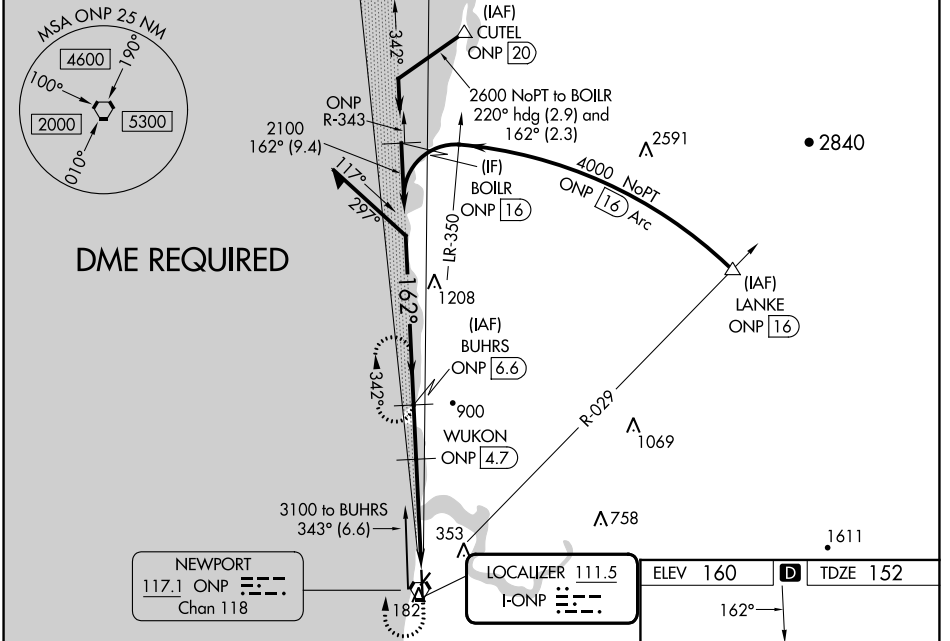
ILS or LOC RWY 16

NEWPORT MUNI (ONP)

▽ Inop table does not apply to S-ILS Rwy 16, all Cats. DME required. VDP NA when using Tillamook altimeter setting. Rwy 16 helicopter visibility reduction below 3/4 SM NA. When local altimeter setting not received, use Tillamook altimeter setting; increase DA to 537 feet and all MDA 140 feet; increase S-LOC 16 Cat C/D visibility 3/8 mile and increase Circling Cat B visibility 1/4 mile. For inop MALSRS, increase S-LOC 16 Cat A/B visibility to 1 mile and Cat C/D visibility to 1 3/8 mile. For inop MALSRS when using Tillamook altimeter setting, increase S-ILS 16 all Cats visibility to 1 1/4 mile and increase S-LOC 16 Cat A/B visibility to 1 mile. DME from ONP VORTAC. Simultaneous reception of I-ONP and ONP DME required.

MALSRS

MISSED APPROACH: Climb to 1000 then climbing right turn to 3000 on heading 020° and on ONP VORTAC R-343 to BUHRS/ONP 6.6 DME and hold, continue climb-in-hold to 3000.

| | | |
|------------------------|--------------------------------------|-------------------------------|
| AWOS-3 133.9 | SEATTLE CENTER 125.8 291.7 | UNICOM 122.8 (CTAF) |
|------------------------|--------------------------------------|-------------------------------|



| CATEGORY | A | B | C | D |
|-------------------|-----------------------|-------------------------------|-------------------------|-------------------------|
| S-ILS 16 | 402-3/4 250 (300-3/4) | | | |
| S-LOC 16 | 660-3/4 | 508 (500-3/4) | 660-1 | 508 (500-1) |
| C CIRCLING | 880-1 720 (800-1) | 1000-1 1/4 840 (900-1 1/4) | 1400-3 1240 (1300-3) | 1600-3 1440 (1500-3) |

NW-1, 28 NOV 2024 to 26 DEC 2024

NW-1, 28 NOV 2024 to 26 DEC 2024