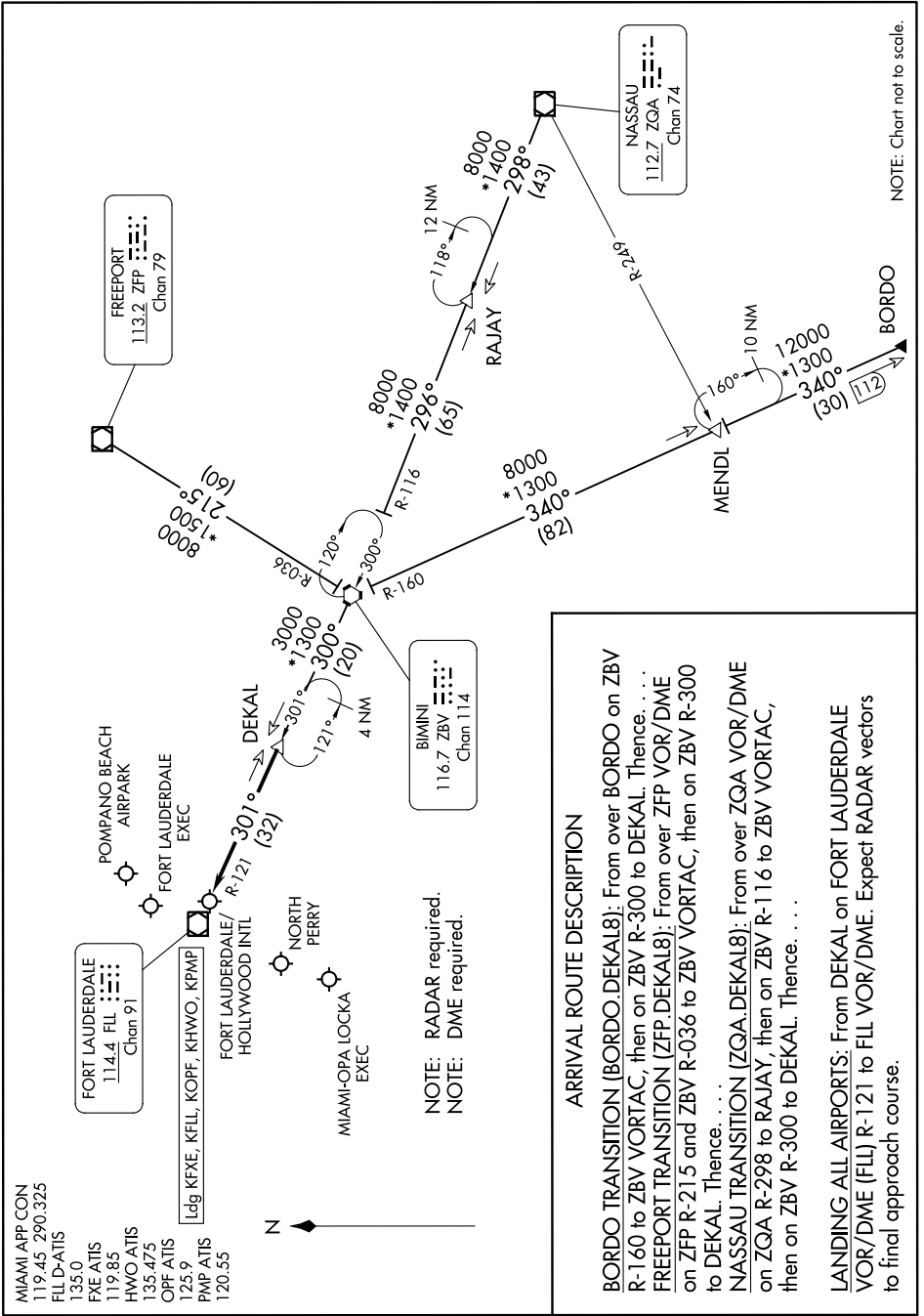


# DEKAL EIGHT ARRIVAL

FORT LAUDERDALE, FLORIDA

SE-3, 28 NOV 2024 to 26 DEC 2024



NOTE: Chart not to scale.

- MIAMI APP CON 119.45 290.325
- FL D-ATIS 135.0
- FYE ATIS 119.85
- HWO ATIS 135.475
- OPF ATIS 125.9
- PMP ATIS 120.55

**FORT LAUDERDALE**  
114.4 FL  
Chan 91

ldg KFXE, KELL, KOPF, KHWO, KPMP

**POMPAÑO BEACH AIRPARK**

**FORT LAUDERDALE EXEC**

**FORT LAUDERDALE/ HOLLYWOOD INTL**

**NORTH PERRY**

**MIAMI-OPA LOCKA EXEC**

**BIMINI ZBV**  
116.7 ZBV  
Chan 114

NOTE: RADAR required.  
NOTE: DME required.

**ARRIVAL ROUTE DESCRIPTION**

**BORDO TRANSITION (BORDO.DEKAL8):** From over BORDO on ZBV R-160 to ZBV VORTAC, then on ZBV R-300 to DEKAL. Thence. . .

**FREEPORT TRANSITION (ZFP.DEKAL8):** From over ZFP VOR/DME on ZFP R-215 and ZBV R-036 to ZBV VORTAC, then on ZBV R-300 to DEKAL. Thence. . .

**NASSAU TRANSITION (ZQA.DEKAL8):** From over ZQA VOR/DME on ZQA R-298 to RAJAY, then on ZBV R-116 to ZBV VORTAC, then on ZBV R-300 to DEKAL. Thence. . .

**LANDING ALL AIRPORTS:** From DEKAL on FORT LAUDERDALE VOR/DME (FL) R-121 to FL VOR/DME. Expect RADAR vectors to final approach course.

SE-3, 28 NOV 2024 to 26 DEC 2024

# DEKAL EIGHT ARRIVAL

(DEKAL.DEKAL8) 03NOV22

FORT LAUDERDALE, FLORIDA