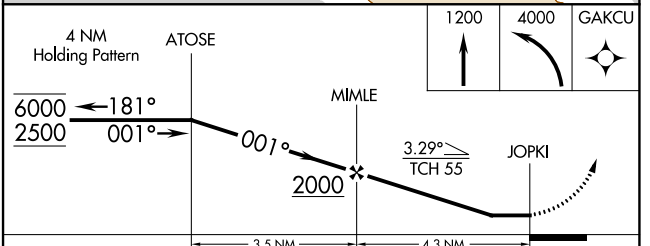
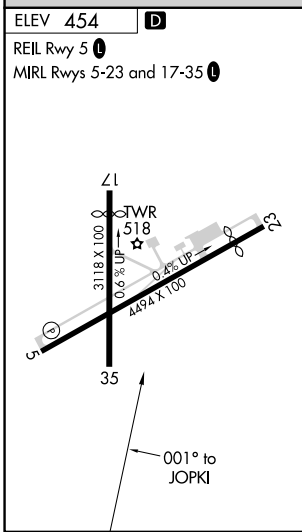
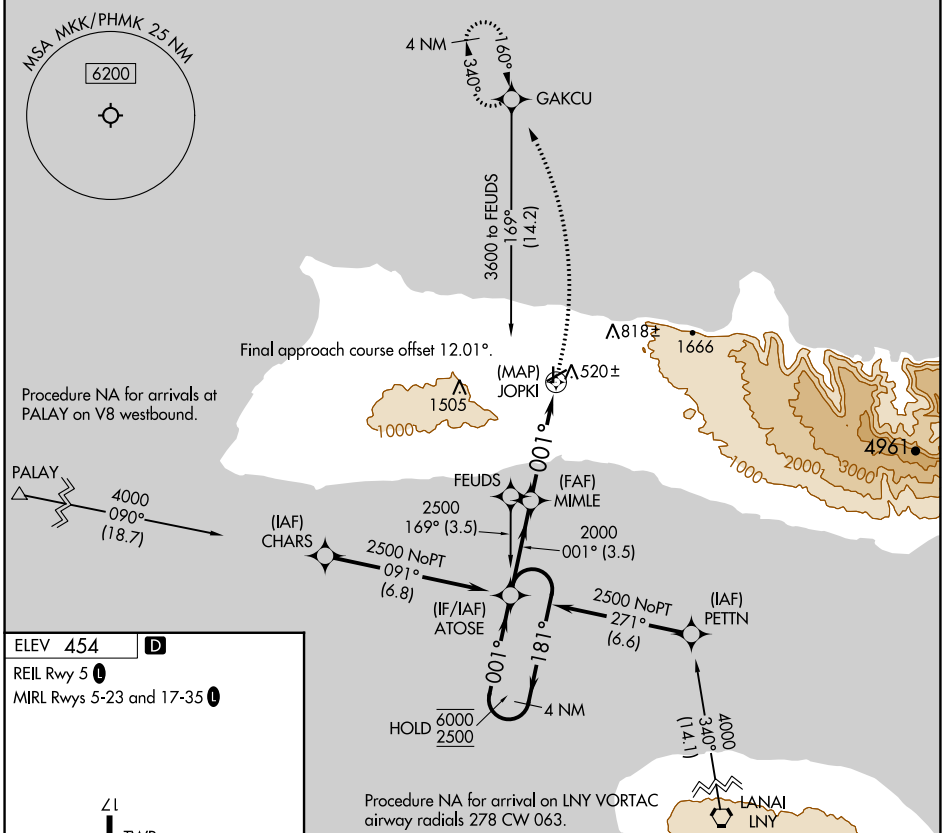


| | | |
|---------|----------|-----|
| APP CRS | Rwy Idg | N/A |
| 001° | TDZE | N/A |
| | Apt Elev | 454 |

RNAV (GPS)-B

MOLOKAI (MKK)(PHMK)

| | | | |
|---|-------------|--|---------|
| RNP APCH. | | MISSED APPROACH: Climb to 1200 then climbing left turn 4000 direct GAKCU and hold, continue climb-in-hold to 4000. | |
| <p>▼ Circling to Rwy 17, 23 NA at night.</p> <p>▲ Circling NA east of Rwy 35 and southeast of Rwy 23.</p> | | | |
| ATIS | HCF CENTER | MOLOKAI TOWER ★ | GND CON |
| 128.2 | 124.1 317.5 | 125.7 (CTAF) 0 306.2 | 121.9 |



| CATEGORY | A | B | C | D |
|-------------------|----------------------|-----------------------|-------------------------|-------------------------|
| C CIRCLING | 980-1 526 (600-1) | 1100-1 646 (700-1) | 1640-3 1186 (1200-3) | 1920-3 1466 (1500-3) |

PAC, 31 OCT 2024 to 26 DEC 2024

PAC, 31 OCT 2024 to 26 DEC 2024