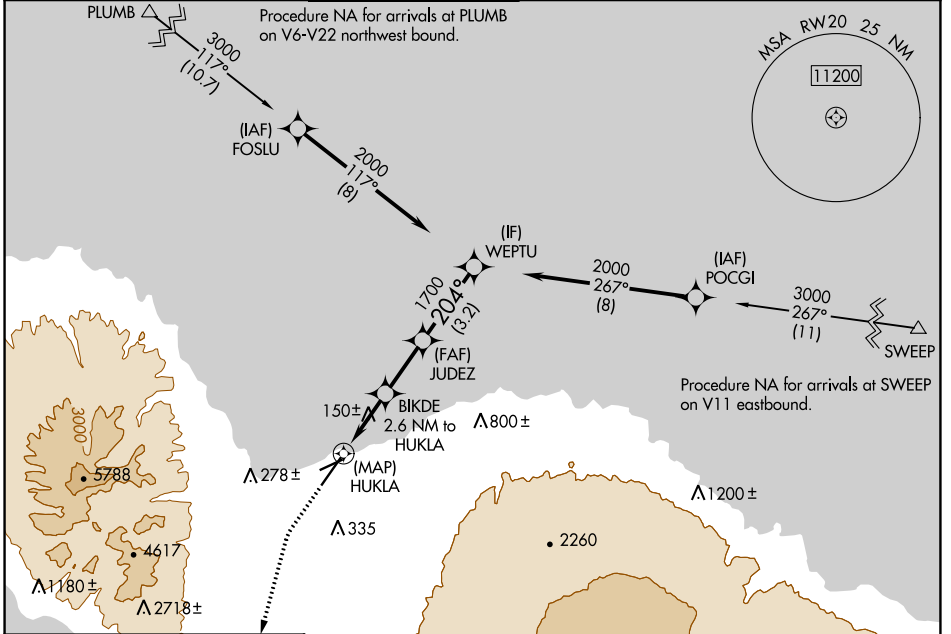


APP CRS	Rwy ldg	6995
204°	TDZE	25
	Apt Elev	53

RNAV (GPS) RWY 20

KAHALUI (OGG)(PHOG)

RNP APCH.		MISSED APPROACH: Climb to 500 then climbing left turn to 4300 direct NDREW and hold.			
When local altimeter setting not received, procedure NA.					
ATIS	HCF APPROACH	MAUI TOWER*	GND CON	CLNC DEL	UNICOM
128.6	120.2 322.4 (NORTH) 119.5 225.4 (SOUTH)	118.7 (CTAF) 0 279.6	121.9 279.6	120.6 290.5	122.95



PAC, 31 OCT 2024 to 26 DEC 2024

PAC, 31 OCT 2024 to 26 DEC 2024

