

LOC/DME I-LNY <b>111.1</b> Chan <b>48</b>	APP CRS <b>033°</b>	Rwy Idg TDZE Apt Elev	<b>5000</b> <b>1307</b> <b>1308</b>
---	------------------------	-----------------------------	---

# ILS or LOC RWY 3

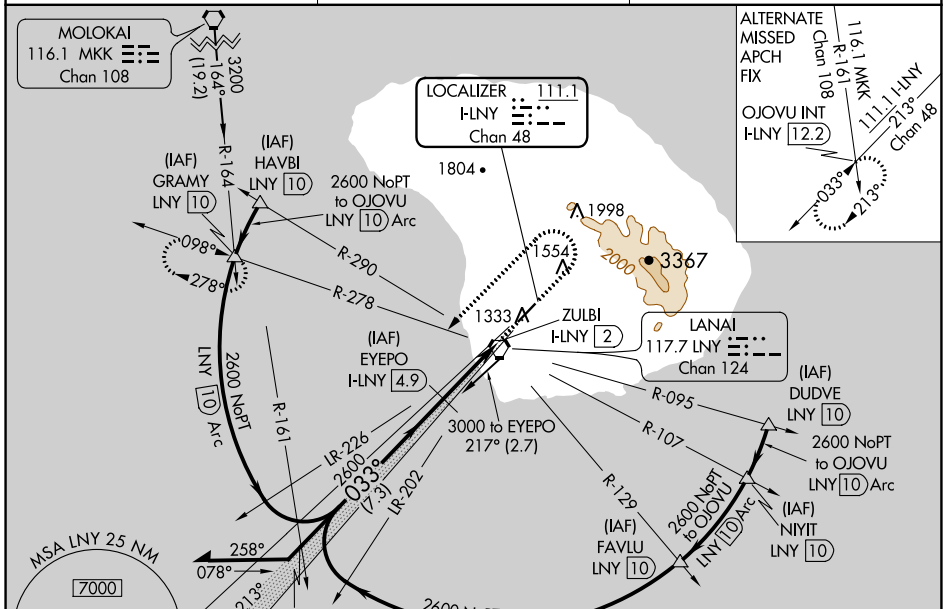
LANAI (LNY)(PHNY)

DME required.

**NA** Circling Rwy 21 NA at night. Autopilot coupled approach NA below 1505. When local altimeter setting not received, procedure NA, except for operators with approved weather reporting service. Circling NA for Cat C southeast of Rwy 3-21.

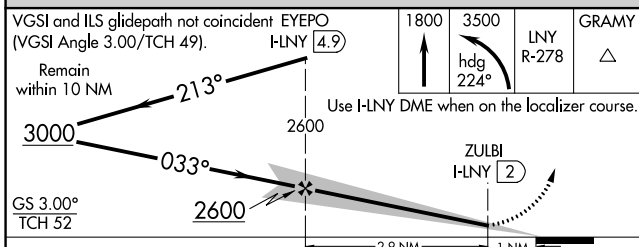
MISSED APPROACH: Climb to 1800 then climbing left turn to 3500 on heading 224° and LNY VORTAC R-278 to GRAMY INT/LNY VORTAC 10 DME and hold.

AWOS-3P <b>118.375</b>	HCF CENTER <b>119.3 307.1</b>	CTAF <b>122.9</b>
---------------------------	----------------------------------	----------------------

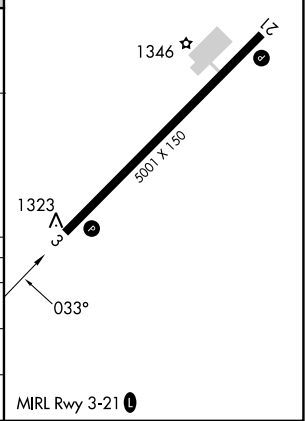


MSA LNY 25 NM  
7000

ELEV 1308 TDZE 1307



CATEGORY	A	B	C	D
S-ILS 3		1588-1	281 (300-1)	
S-LOC 3		1580-1¼	273 (300-1¼)	
CIRCLING	1900-1¼ 592 (600-1¼)	1940-1¼ 632 (700-1¼)	2140-2½ 832 (900-2½)	NA



PAC, 31 OCT 2024 to 26 DEC 2024

PAC, 31 OCT 2024 to 26 DEC 2024