

BURNS FLAT, OKLAHOMA

AL-778 (FAA)

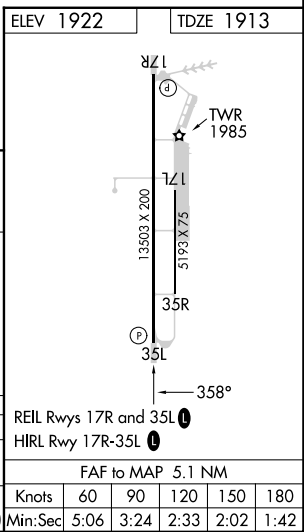
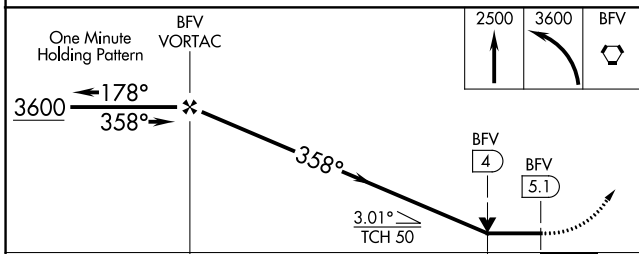
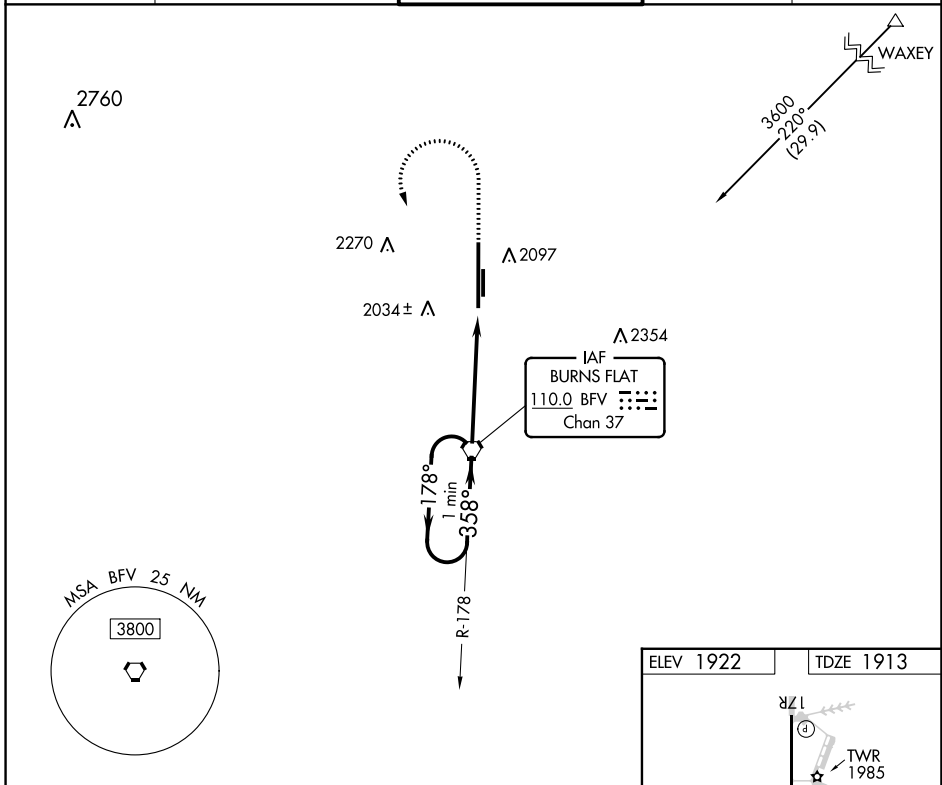
23110

VORTAC BFV 110.0 Chan 37	APP CRS 358°	Rwy Idg TDZE Apt Elev	13503 1913 1922
---------------------------------------	------------------------	-----------------------------	--------------------------------------------

VOR RWY 35L

CLINTON/SHERMAN (CSM)

<p>▽ Circling NA east of runway 17R-35L.</p> <p>▲ MISSED APPROACH: Climb to 2500 then climbing left turn to 3600 direct BFV VORTAC and hold.</p>		CLINTON/SHERMAN TOWER★ 119.6 (CTAF) 0 256.9	GND CON 121.7 239.0	UNICOM 122.95
ASOS 118.45	FORT WORTH CENTER 128.4 269.37			



CATEGORY	A	B	C	D	E
S-35L	2340-1	427 (500-1)	2340-1¼	427 (500-1¼)	
C CIRCLING	2340-1 418 (500-1)	2380-1 458 (500-1)	2380-1½ 458 (500-1½)	2620-2¼ 698 (700-2¼)	2620-2½ 698 (700-2½)

BURNS FLAT, OKLAHOMA
Amdt 12A 17AUG17

35°20'N-99°12'W

CLINTON/SHERMAN (CSM) VOR RWY 35L

SC-1, 28 NOV 2024 to 26 DEC 2024

SC-1, 28 NOV 2024 to 26 DEC 2024