

(JHAWK.JHAWK8) 24137

# JHAWK EIGHT ARRIVAL

AL-780 (FAA)

KANSAS CITY, MISSOURI

KANSAS CITY APP CON  
 120.95 318.1  
 MCI D-ATIS  
 128.375  
 MKC ATIS  
 120.75  
 OJC ATIS  
 119.35  
 STJ ATIS  
 125.05

RADAR required.

ROSECRANS  
 MEML

KANSAS CITY  
 113.25 MCI Chan 79(Y)

TOPEKA  
 117.8 TOP Chan 125

RUGBB  
 Jets landing south:  
 Expect 12000

SHERMAN  
 AAF

MIDWEST NTL  
 AIR CENTER

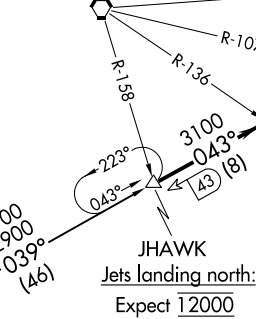
KANSAS CITY  
 INTL

CHARLES B WHEELER  
 DOWNTOWN

LEE'S SUMMIT MUNI

NEW CENTURY  
 AIRCENTER

JOHNSON COUNTY  
 EXEC



NOTE: Chart not to scale.

## ARRIVAL ROUTE DESCRIPTION

EMPORIA TRANSITION (EMP.JHAWK8): From over EMP VORTAC on EMP R-039 and MCI R-223 to JHAWK. Thence. . .

LANDING KANSAS CITY INTL (MCI):

RUNWAYS 19L/R: From over JHAWK on MCI R-223 to NOAHS then on heading 010°. Thence. . .

RUNWAYS 1L/R: From over JHAWK on MCI R-223 to HOOZE then on heading 060°. Thence. . .

RUNWAYS 9, 27: From over JHAWK on MCI R-223 to HOOZE. Thence. . .

LANDING CHARLES B WHEELER DOWNTOWN (MKC):

RUNWAYS 1, 4: From over JHAWK on MCI R-223 to HOOZE. Thence. . .

RUNWAYS 19, 22: From over JHAWK on MCI R-223 to NOAHS then on heading 010°. Thence. . .

LANDING ROSECRANS MEML (STJ) AND SHERMAN AAF (FLV):

From over JHAWK on MCI R-223 to NOAHS then on heading 010°. Thence. . .

ALL OTHER AIRPORTS: From over JHAWK on MCI R-223 to HOOZE. Thence. . .

. . . expect RADAR vectors to final approach course.

# JHAWK EIGHT ARRIVAL

(JHAWK.JHAWK8) 16MAY24

KANSAS CITY, MISSOURI

NC-3, 28 NOV 2024 to 26 DEC 2024

NC-3, 28 NOV 2024 to 26 DEC 2024