

WAAS CH <b>56323</b> <b>W01A</b>	APP CRS <b>013°</b>	Rwy Idg TDZE Apt Elev	<b>6750</b> <b>2495</b> <b>2504</b>
--	------------------------	-----------------------------	---

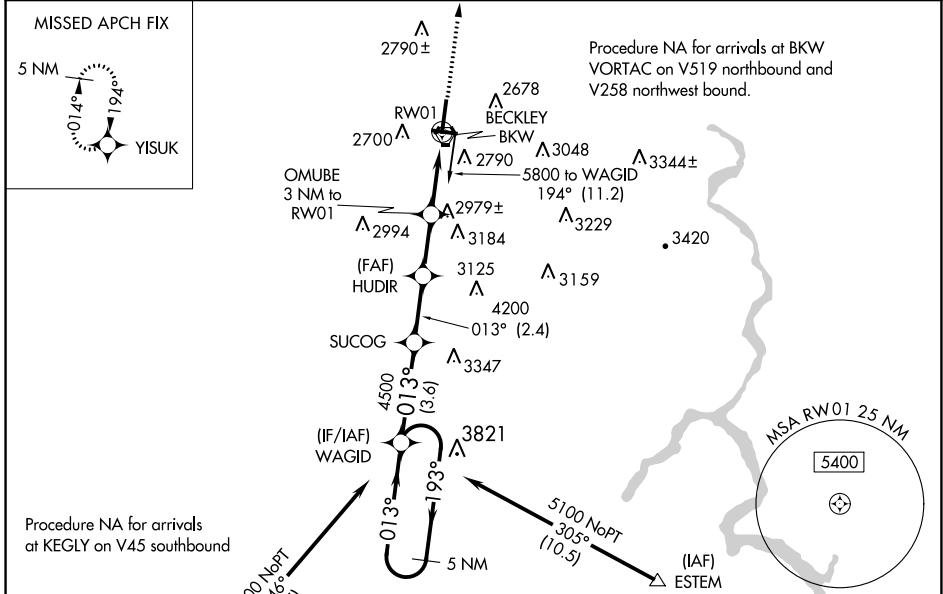
# RNAV (GPS) RWY 1

RALEIGH COUNTY MEML (BKW)

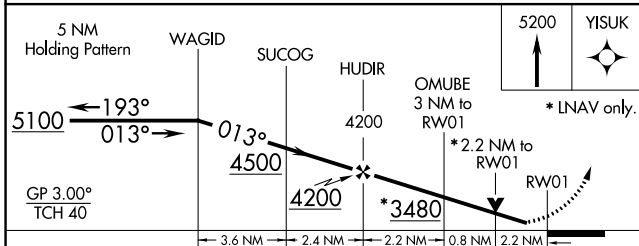
**▼** Baro-VNAV NA when using Bluefield altimeter setting. For uncompensated Baro-VNAV systems, LNAV/VNAV NA below -19°C (-2°F) or above 28°C (82°F). DME/DME RNP-0.3 NA.  
**▲** Helicopter visibility reduction below ¾ SM NA. When local altimeter not received, use Bluefield altimeter setting and increase all DA 118 feet and all MDA 120 feet; increase LPV all Cats visibility ½ SM, LNAV/VNAV all Cats visibility ¼ SM, LNAV Cat C/D visibility ½ SM, and Circling Cat A/C visibility ¼ SM.

**MISSED APPROACH:**  
Climb to 5200 direct YISUK and hold.

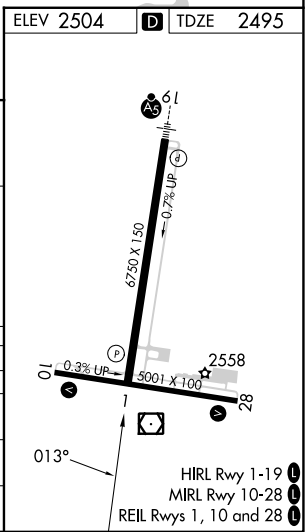
ASOS <b>121.55</b>	CHARLESTON APP CON <b>125.4 269.125</b>	UNICOM <b>123.0 (CTAF) 0</b>
-----------------------	--	---------------------------------



ELEV 2504	<b>D</b> TDZE 2495
-----------	--------------------



CATEGORY	A	B	C	D
LPV DA	2810-1		315 (400-1)	
LNAV/VNAV DA	3093-2 ¼		598 (600-2 ¼)	
LNAV MDA	3240-1 745 (800-1)	3240-1 ¼ 745 (800-1 ¼)	3240-2 745 (800-2)	745 (800-2)
<b>C</b> CIRCLING	3240-1 736 (800-1)	3240-1 ¼ 736 (800-1 ¼)	3320-2 ½ 816 (900-2 ½)	3500-3 996 (1000-3)



NE-4, 28 NOV 2024 to 26 DEC 2024

NE-4, 28 NOV 2024 to 26 DEC 2024