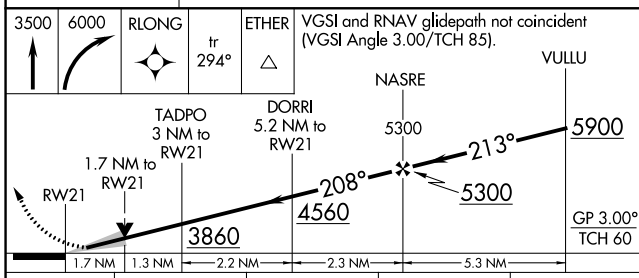
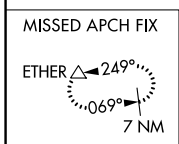
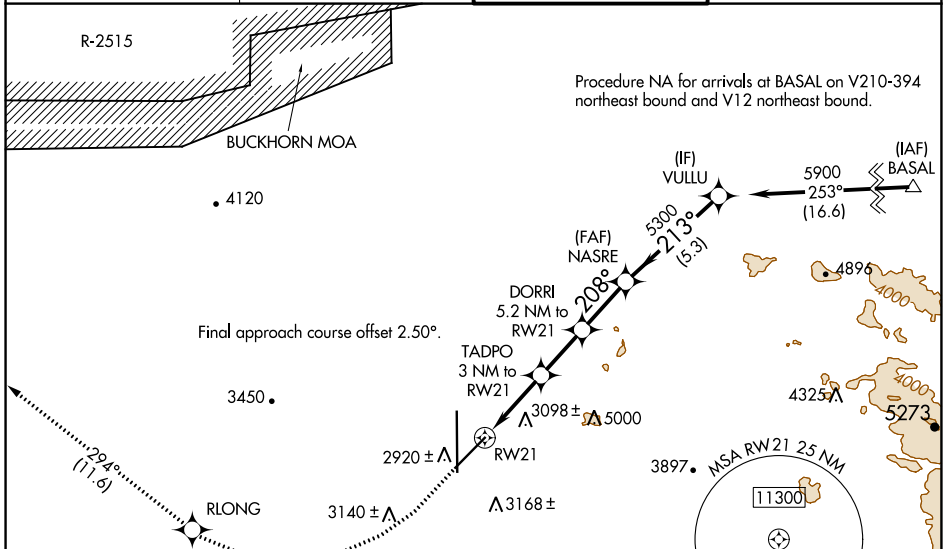


WAAS CH 82246 W21A	APP CRS 208°	Rwy Idg TDZE Apt Elev	9138 2858 2885
--	------------------------	-----------------------------	---

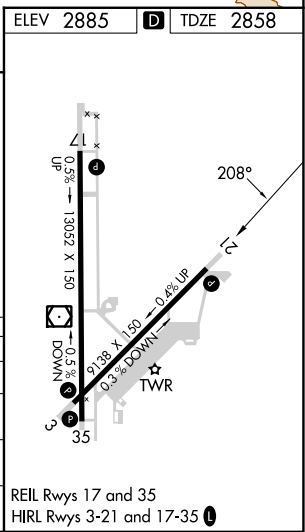
RNAV (GPS) RWY 21

SOUTHERN CALIFORNIA LOGISTICS (VCV)

RNP APCH - GPS.		MISSED APPROACH: Climb to 3500 then climbing right turn to 6000 direct RLONG and on track 294° to ETHER and hold.	
<p>⚠ Circling NA for C and D southeast of Rwsy 35 and 21. ⚠ For uncompensated Baro-VNAV systems, LNAV/VNAV NA below -20°C or above 54°C.</p>	<p>ATIS ★ 135.475</p>	<p>JOSHUA APP CON 124.55 363.0</p>	<p>VICTORVILLE TOWER ★ 118.35 (CTAF) 282.225</p>
		<p>GND CON 124.45</p>	



CATEGORY	A	B	C	D
LPV DA	3108-1		250 (300-1)	
LNAV/VNAV DA	3153-1		295 (300-1)	
LNAV MDA	3480-1	622 (600-1)	3480-1¾	622 (600-1¾)
CIRCLING	3480-1	595 (600-1)	3480-1¾	3760-2¾ 875 (900-2¾)



SW-3, 28 NOV 2024 to 26 DEC 2024

SW-3, 28 NOV 2024 to 26 DEC 2024