


VOR/DME PUV <b>117.15</b> Chan <b>118</b> (Y)	APP CRS <b>027°</b>	Rwy Idg TDZE Apt Elev	<b>7100</b> <b>2567</b> <b>2567</b>
---	------------------------	-----------------------------	---

# VOR RWY 5

PULLMAN/MOSCOW RGNL (PUW)

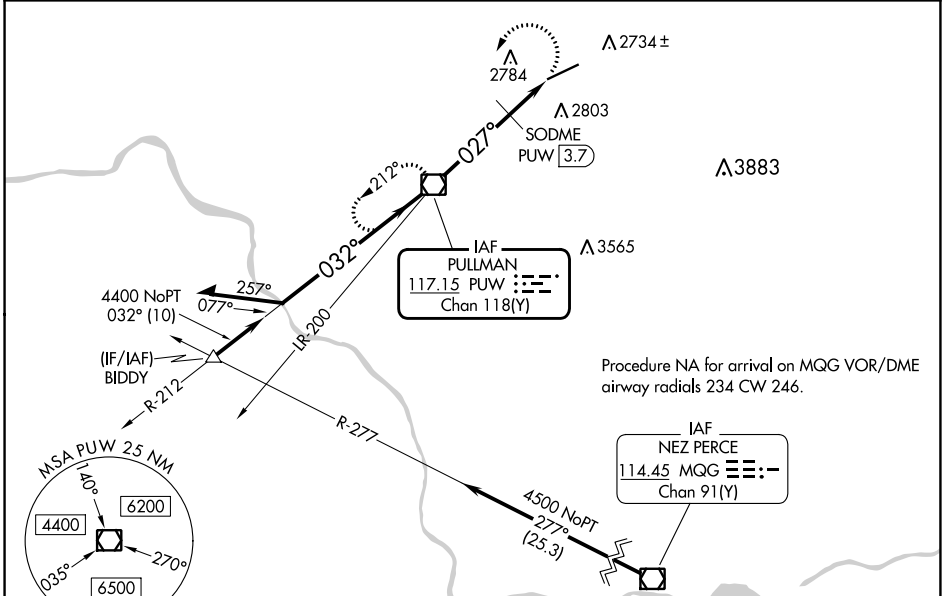
DME required.

▼ Procedure NA at night.  
 ▲ Rwy 5 helicopter visibility reduction below 1 SM NA.  
 Inop table does not apply to S-5 and SODME fix minimums Cats A/B.  
 For inop ALS, increase S-5 SODME fix minimums Cat C/D visibility to 1½ SM.

MALSR 

MISSED APPROACH: Climbing left turn to 6000 direct PUW VOR/DME and hold, continue climb-in-hold to 6000.

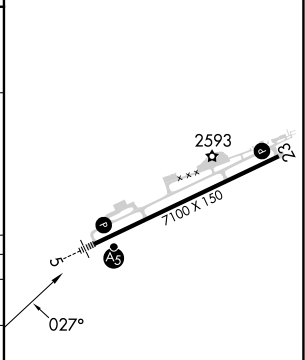
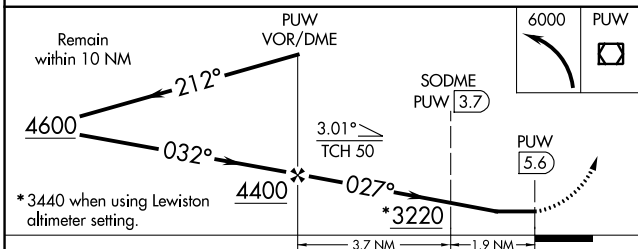
ASOS <b>135.675</b>	SEATTLE CENTER <b>123.95 290.55</b>	UNICOM <b>122.8</b> (CTAF) 
------------------------	--	---






NW-1, 28 NOV 2024 to 26 DEC 2024


NW-1, 28 NOV 2024 to 26 DEC 2024

ELEV 2567		TDZE 2567
-----------	---	-----------



CATEGORY	A	B	C	D
S-5	3220/50	653 (700-1)	3220-1¾	653 (700-1¾)
 CIRCLING	3220-1	653 (700-1)	3220-1⅞	3420-2¾ 653 (700-1⅞) 853 (900-2¾)
SODME FIX MINIMUMS				
S-5	3040/50 473 (500-1)			
 CIRCLING	3080-1 513 (600-1)	3120-1 553 (600-1)	3140-1½ 573 (600-1½)	3420-2¾ 853 (900-2¾)

REIL Rwy 23 

HIRL Rwy 5-23 

FAF to MAP 5.6 NM

Knots	60	90	120	150	180
Min:Sec	5:36	3:44	2:48	2:14	1:52