

ANTHM FOUR ARRIVAL (RNAV) Transition Routes

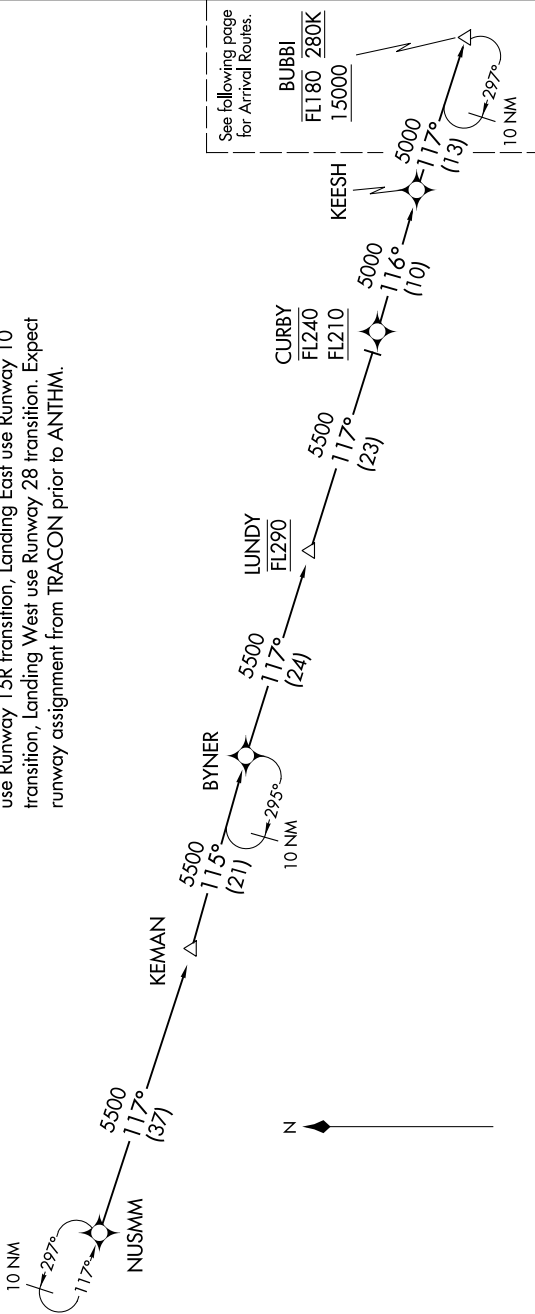
BALTIMORE, MARYLAND

NE-3, 28 NOV 2024 to 26 DEC 2024

POTOMAC APP CON
133.85 254.25
BWI D-ATIS
115.1 127.8
MTN ATIS
124.925

RNAV 1 - DME/DME/IRU or GPS.
RADAR required.

NOTE: Jet aircraft only.
NOTE: PROHIBITED AREA (P-56) 1.5 NM north of DCA avoid surface to 18000 MSL.
NOTE: Landing North use Runway 33L transition, Landing South use Runway 15R transition, Landing East use Runway 10 transition, Landing West use Runway 28 transition. Expect runway assignment from TRACON prior to ANTHM.



NOTE: Chart not to scale.

(CONTINUED ON FOLLOWING PAGES)

KEESH TRANSITION (KEESH.ANTHM4)
KEMAN TRANSITION (KEMAN.ANTHM4)
NUSMM TRANSITION (NUSMM.ANTHM4)

NE-3, 28 NOV 2024 to 26 DEC 2024

ANTHM FOUR ARRIVAL (RNAV) Transition Routes

BALTIMORE, MARYLAND