

LOC/DME I-HCV 110.3 Chan 40	APP CRS 052°	Rwy Idg 6215 TDZE 947 Apt Elev 947
---	------------------------	---

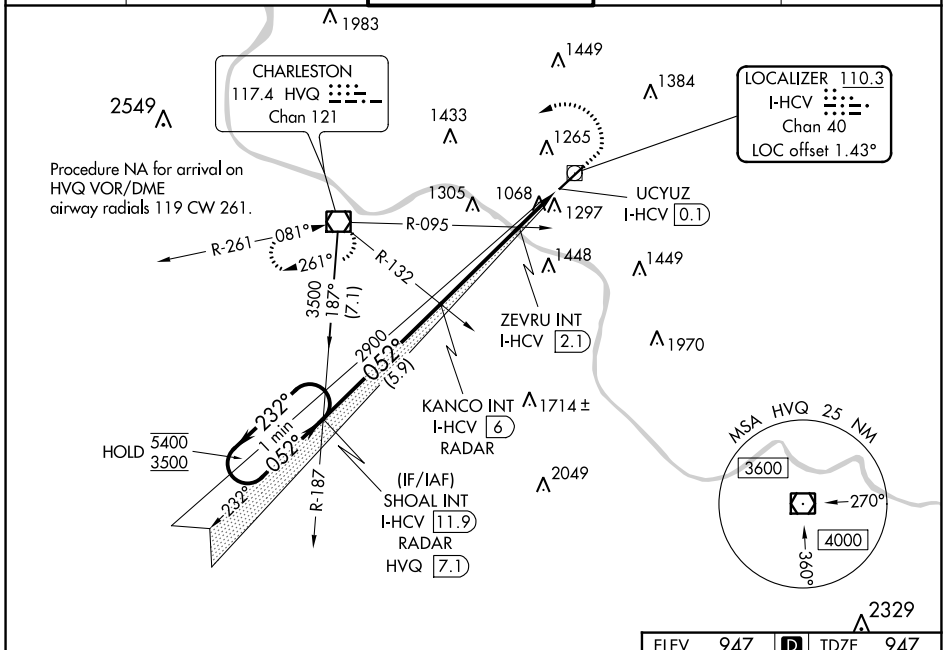
ILS or LOC RWY 5

WEST VIRGINIA INTL YEAGER (CRW)

Autopilot coupled approach NA below 1300.

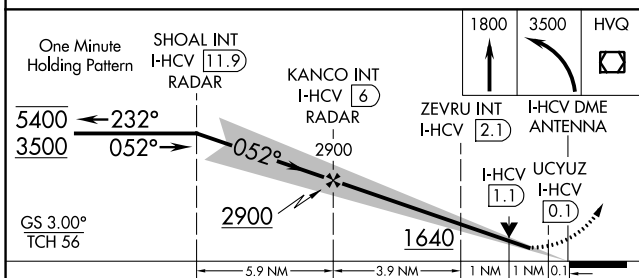
MISSED APPROACH: Climb to 1800 then climbing left turn to 3500 direct HVQ VOR/DME and hold.

ATIS 127.6	CHARLESTON APP CON 124.1 269.125	CHARLESTON TOWER 125.7 257.8	GND CON 121.8 348.6	CLNC DEL 118.55
----------------------	--	--	-------------------------------	---------------------------



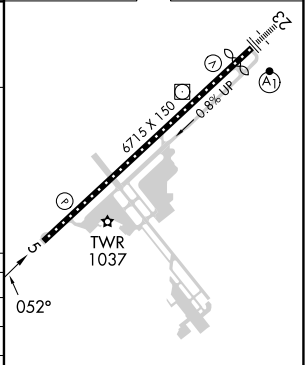
NE-4, 28 NOV 2024 to 26 DEC 2024

NE-4, 28 NOV 2024 to 26 DEC 2024



ELEV	947	TDZE	947
------	-----	------	-----

CATEGORY	A	B	C	D
S-ILS 5	1197/40		250 (300-¾)	
S-LOC 5	1640/55	693 (700-1)	1640-2	693 (700-2)
C CIRCLING	1640-1	693 (700-1)	1760-2½ 813 (900-2½)	1880-3 933 (1000-3)
ZEVUR FIX MINIMUMS (DUAL VOR RECEIVERS OR DME REQUIRED)				
S-LOC 5	1320/55		373 (400-1)	
C CIRCLING	1600-1	653 (700-1)	1760-2½ 813 (900-2½)	1880-3 933 (1000-3)



HIRL Rwy 5-23 REIL Rwys 5					
FAF to MAP 5.9 NM					
Knots	60	90	120	150	180
Min:Sec	5:54	3:56	2:57	2:22	1:58