

NDB MOG <b>404</b>	APP CRS <b>356°</b>	Rwy ldg TDZE Apt Elev <b>N/A</b> <b>N/A</b> <b>2651</b>
-----------------------	------------------------	---

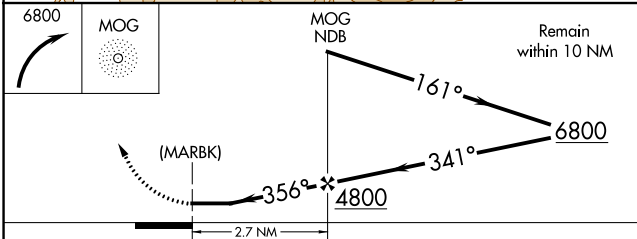
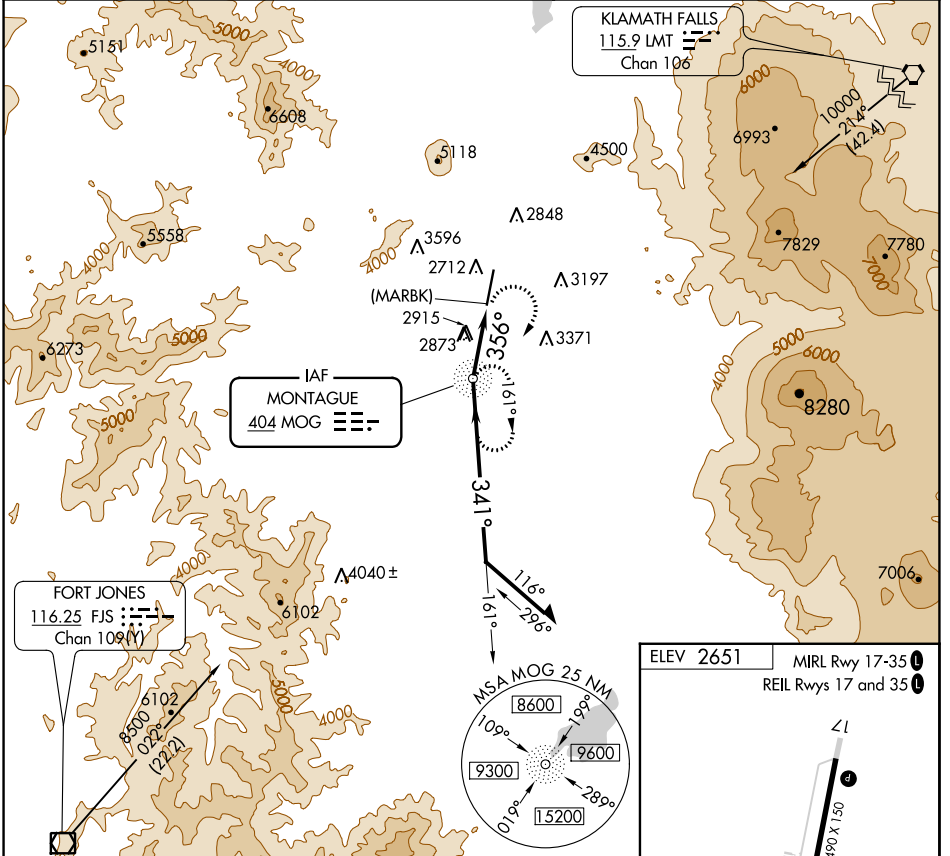
# NDB or GPS-A

SISKIYOU COUNTY (SIY)

▼ Use Siskiyou County altimeter setting; when not available, use Montague-Yreka Rohrer Fld altimeter setting; when neither received, procedure not authorized. Circling NA for Cats C and D west of Rwy 17-35.

▲ NA MISSED APPROACH: Climbing right turn to 6800 direct MOG NDB and hold.

ASOS <b>121.125</b>	SEATTLE CENTER <b>124.85 306.3</b>	UNICOM <b>123.0 (CTAF) 0</b>
------------------------	---------------------------------------	---------------------------------



ELEV 2651	MIRL Rwy 17-35
	REIL Rws 17 and 35

The diagram shows runway 17-35 with a length of 7490 x 150 feet. The elevation at the end of the runway is 2691 feet. The approach path is shown with a bearing of 356° and a distance of 2.7 NM from the runway end.

FAF to MAP 2.7 NM					
Knots	60	90	120	150	180
Min:Sec	2:42	1:48	1:21	1:05	0:54

CATEGORY	A	B	C	D
CIRCLING	3760-1¼ 1109 (1200-1¼)	3760-1½ 1109 (1200-1½)	3980-3 1329 (1400-3)	4220-3 1569 (1600-3)

SW-2, 28 NOV 2024 to 26 DEC 2024

SW-2, 28 NOV 2024 to 26 DEC 2024