

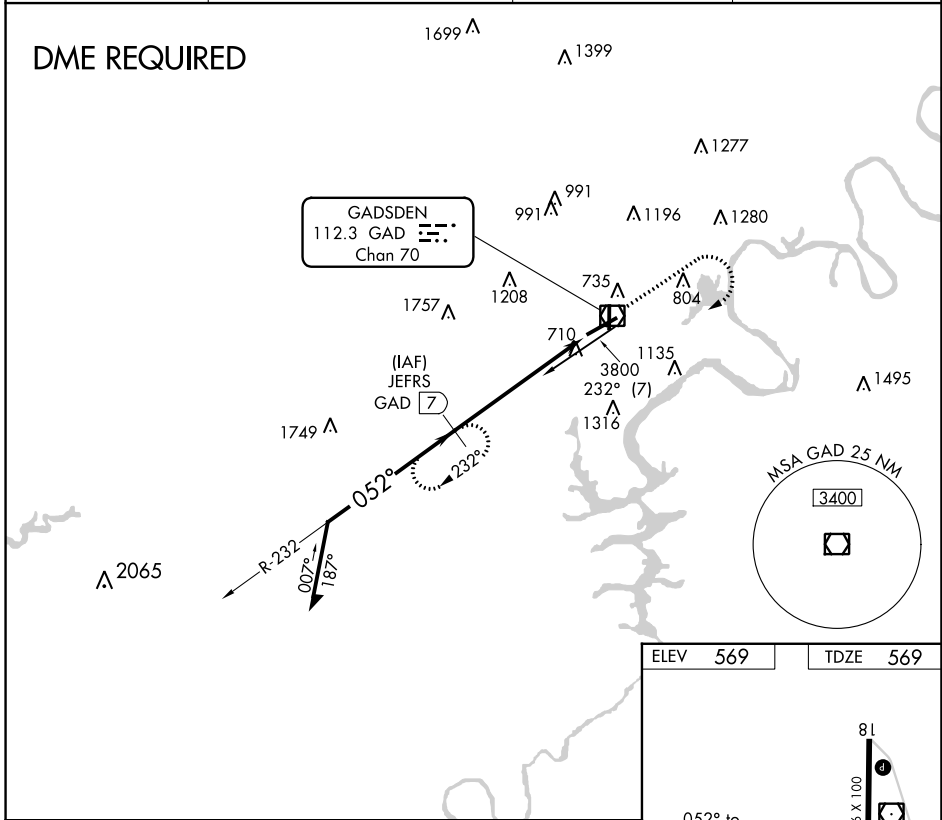
VOR/DME GAD <b>112.3</b> Chan <b>70</b>	APP CRS <b>052°</b>	Rwy Idg TDZE <b>569</b> Apt Elev <b>569</b>	<b>6802</b>
---	------------------------	---	-------------

**VOR RWY 6**  
NORTHEAST ALABAMA RGNL (GAD)

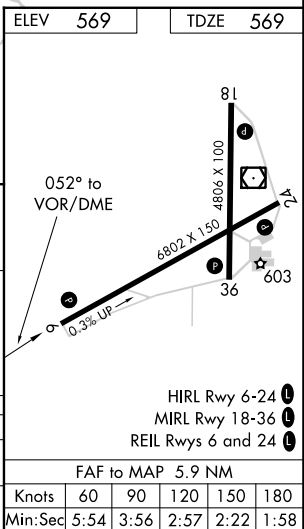
**⚠** When local altimeter setting not received, use Anniston altimeter setting and increase all MDAs 80 feet; increase S-6 Cat C/D visibility ¼ mile and Circling Cat C ½ SM. VDP NA when using Anniston altimeter setting. DME required.

**MISSED APPROACH:** Climb to 2000 then climbing right turn to 3500 on GAD VOR/DME R-232 to JEFRS/7 DME and hold.

AWOS-3PT <b>127.825</b>	BIRMINGHAM APP CON <b>125.45 279.65</b>	CLNC DEL <b>120.05 257.7</b>	UNICOM <b>122.8 (CTAF)</b>
----------------------------	--	---------------------------------	-------------------------------



Remain within 10 NM	JEFRS GAD 7		2000	3500	JEFRS GAD 7
	3100	232°	GAD 2.2	GAD R-232	GAD 1.1
	052°	3.02° TCH 40	4.8 NM	1.1	
CATEGORY	A	B	C	D	
S-6	960-1	391 (400-1)	960-1 1/8	391 (400-1 1/8)	
CIRCLING	1100-1	531 (600-1)	1440-2 1/2 871 (900-2 1/2)	1680-3 1111 (1200-3)	



SE-4, 28 NOV 2024 to 26 DEC 2024

SE-4, 28 NOV 2024 to 26 DEC 2024

ELEV	569	TDZE	569
HIRL Rwy 6-24			
MIRL Rwy 18-36			
REIL Rwys 6 and 24			
FAF to MAP 5.9 NM			
Knots	60	90	120 150 180
Min:Sec	5:54	3:56	2:57 2:22 1:58