

WAAS CH <b>86620</b>	APP CRS <b>358°</b>	Rwy Idg TDZE Apt Elev	<b>5998</b> <b>202</b> <b>206</b>
-------------------------	------------------------	-----------------------------	---

# RNAV (GPS) RWY 36

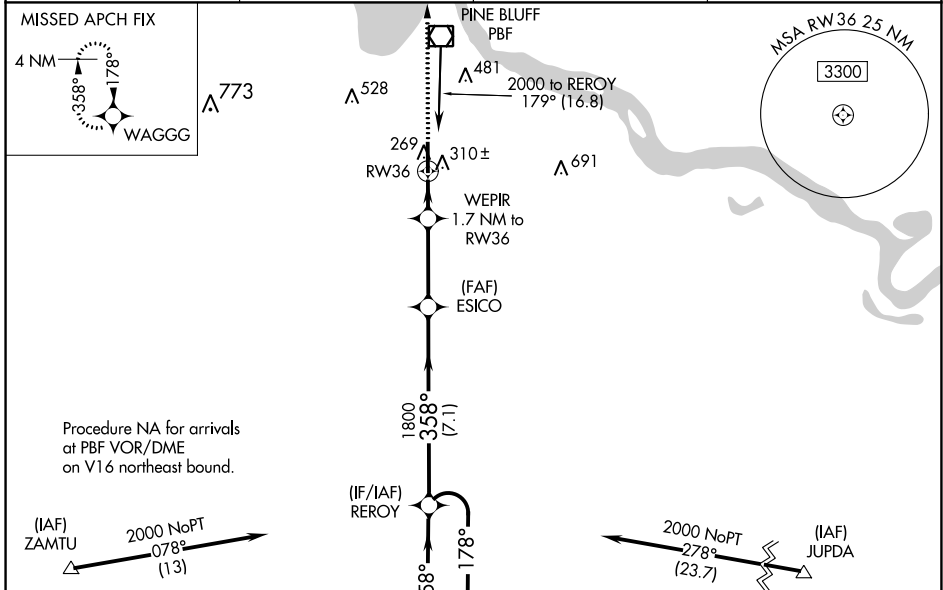
PINEBLUFF RGNL/GRIDER FLD (PBF)

RNP APCH - GPS.

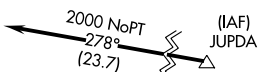
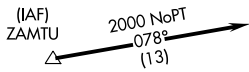
Baro-VNAV and VDP NA when using Stuttgart altimeter setting. For uncompensated Baro-VNAV systems, LNAV/VNAV NA below -15°C or above 42°C. When local altimeter setting not received, use Stuttgart altimeter setting and increase LPV DA to 527 feet. Increase LNAV/VNAV DA to 562 feet. Increase all MDAs 80 feet and LNAV visibility Cat C/D ¼ SM, and Circling visibility Cat C/D ¼ SM.

MISSED APPROACH:  
Climb to 2000 direct  
WAGGG and hold.

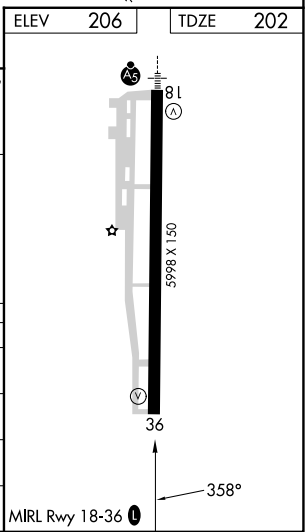
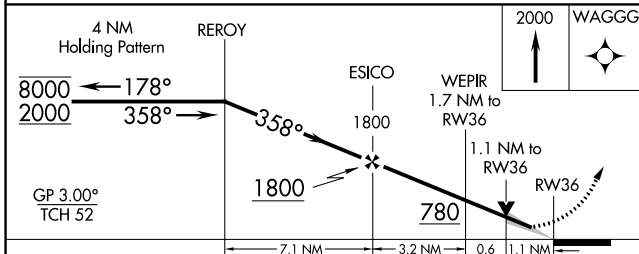
ASOS <b>120.775</b>	LITTLE ROCK APP CON <b>119.85 353.6</b>	CLNC DEL <b>119.85</b>	UNICOM <b>123.0 (CTAF)</b>
------------------------	--	---------------------------	-------------------------------



Procedure NA for arrivals at PBF VOR/DME on V16 northeast bound.



ELEV	206	TDZE	202
------	-----	------	-----



CATEGORY	A	B	C	D
LPV DA	452-1 250 (300-1)			
LNAV/VNAV DA	487-1 285 (300-1)			
LNAV MDA	600-1 398 (400-1)	600-1 398 (400-1)		600-1 398 (400-1)
CIRCLING	660-1 454 (500-1)	680-1 474 (500-1)	840-1 634 (700-1)	880-2 674 (700-2)

SC-1, 28 NOV 2024 to 26 DEC 2024

SC-1, 28 NOV 2024 to 26 DEC 2024