

VIRGINIA BEACH, VIRGINIA

HI-TACAN Z RWY 32L/R

[USN]

OCEANA NAS (APOLLO SOUCEK FLD) (KNTU)

TACAN NTU Chan 113	APCH CRS 309°	Rwy ldg 32L 8000 32R 8001	TDZE 32L 22 32R 20	Arprt Elev 22
-----------------------	------------------	---------------------------------	--------------------------	------------------

ALSF-1

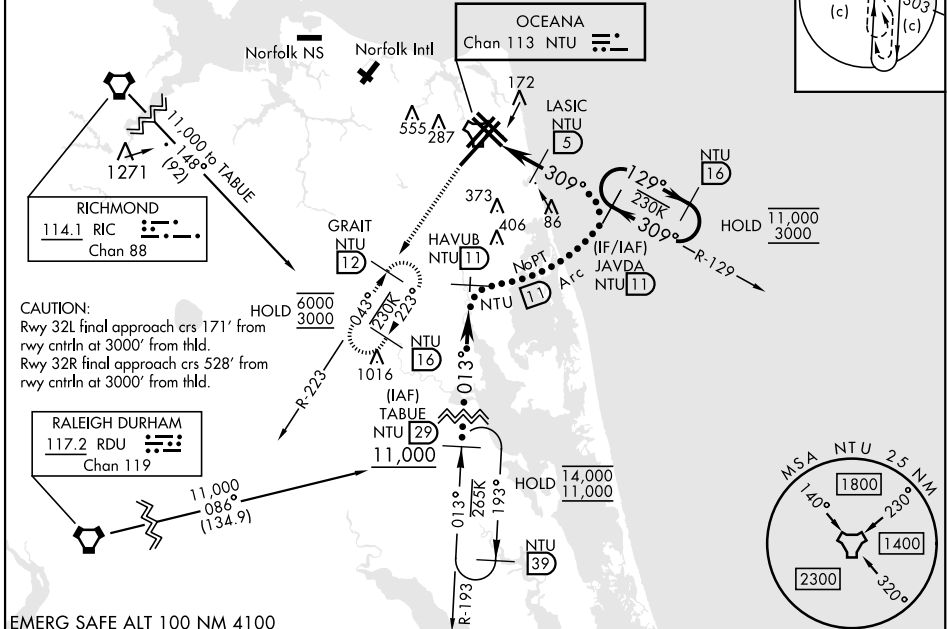
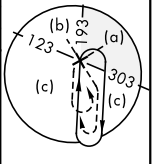
* When ALS inop, increase CAT CDE vis to 1½ miles.

MISSED APPROACH: Climbing left turn to 3000, intercept NTU TACAN R-223 to GRAIT and hold.

ATIS 317.6	APP/DEP CON 123.9 266.8	TOWER 127.075 360.2	GND CON 119.6 336.4	CLNC DEL 254.4	ASR/ PAR
---------------	----------------------------	------------------------	------------------------	-------------------	-------------

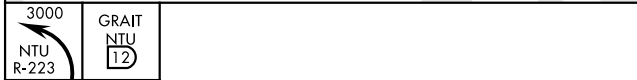
RICHMOND feeder turn exceeds 120°. RADAR or turn in hold required

Knots	60	120	180	240	300	360
V/V(fpm)	220	440	660	880	1100	1320
Min climb of 220 ft/NM to 3000 - Controlling Obstacle Unk						

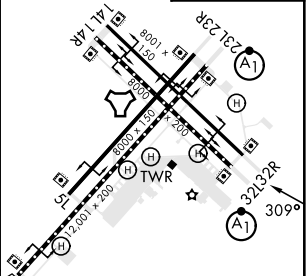
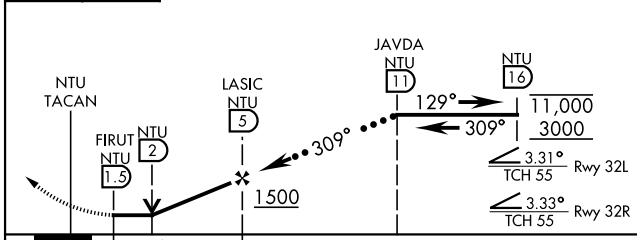


CAUTION:
Rwy 32L final approach crs 171° from rwy cntrln at 3000' from thld.
Rwy 32R final approach crs 528° from rwy cntrln at 3000' from thld.

EMERG SAFE ALT 100 NM 4100



ELEV	22	TDZE 32L	22
		TDZE 32R	20



CATEGORY	C	D	E
S-32L*	440-¾	418 (500-¾)	
S-32L	440-1½	420 (500-1½)	
CIRCLING	600-1½	600-2	900-3
	578 (600-1½)	578 (600-2)	878 (900-3)

HIRL all Rwy
Wave-Off Lgt all Rwy

VIRGINIA BEACH, VIRGINIA

36°49'N-76°02'W

OCEANA NAS (APOLLO SOUCEK FLD) (KNTU)

Orig 27JAN22

HI-TACAN Z RWY 32L/R

NE-3, 28 NOV 2024 to 26 DEC 2024

NE-3, 28 NOV 2024 to 26 DEC 2024