

TACAN Y RWY 5L

TACAN NTU Chan 113	APCH CRS 043°	Rwy Idg 8000
		TDZE 20
		Arprt Elev 22

AL-934 [USN]

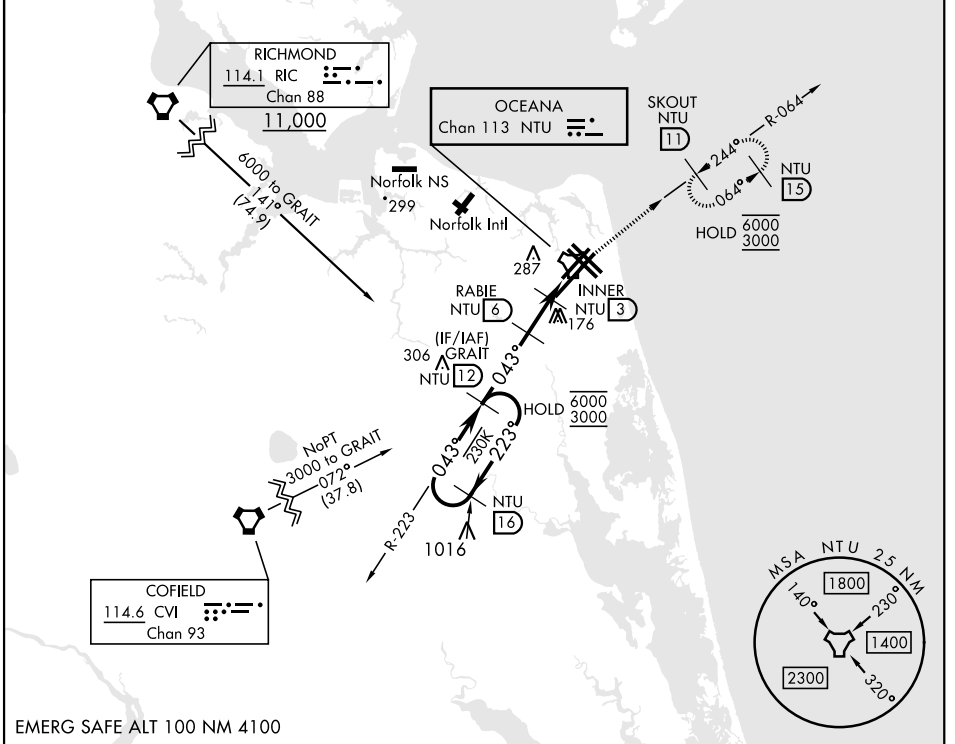
OCEANA NAS (APOLLO SOUCEK FLD) (KNTU)

MISSED APPROACH: Climb to 3000 via R-223 to NTU TACAN and via R-064 to SKOUT and hold.

ATIS 317.6	APP/DEP CON 123.9 266.8	TOWER 127.075 360.2	GND CON 119.6 336.4	CLNC DEL 254.4	ASR/ PAR
---------------	----------------------------	------------------------	------------------------	-------------------	-------------

CAUTION: Final approach crs 17° from rwy cntrln at 3000' from thld.		Knots	60	120	180	240	300	360
		V/V(fpm)	210	420	630	840	1050	1260

Min climb of 210 ft/NM to 3000 - Controlling Obstacle Unk



NE-3, 28 NOV 2024 to 26 DEC 2024

NE-3, 28 NOV 2024 to 26 DEC 2024

EMERG SAFE ALT 100 NM 4100

	3000 NTU R-223	NTU	NTU R-064	ELEV 22	TDZE 20
--	-------------------	-----	-----------	---------	---------

CATEGORY	A	B	C	D
S-5L	420-1	400 (400-1)	420-1 1/8	400 (400-1 1/2)
CIRCLING	500-1	478 (500-1)	600-1 1/2 578 (600-1 1/2)	600-2 578 (600-2)

TACAN Y RWY 5L

HIRL all rwyws
Wave-Off Lgt all rwyws