

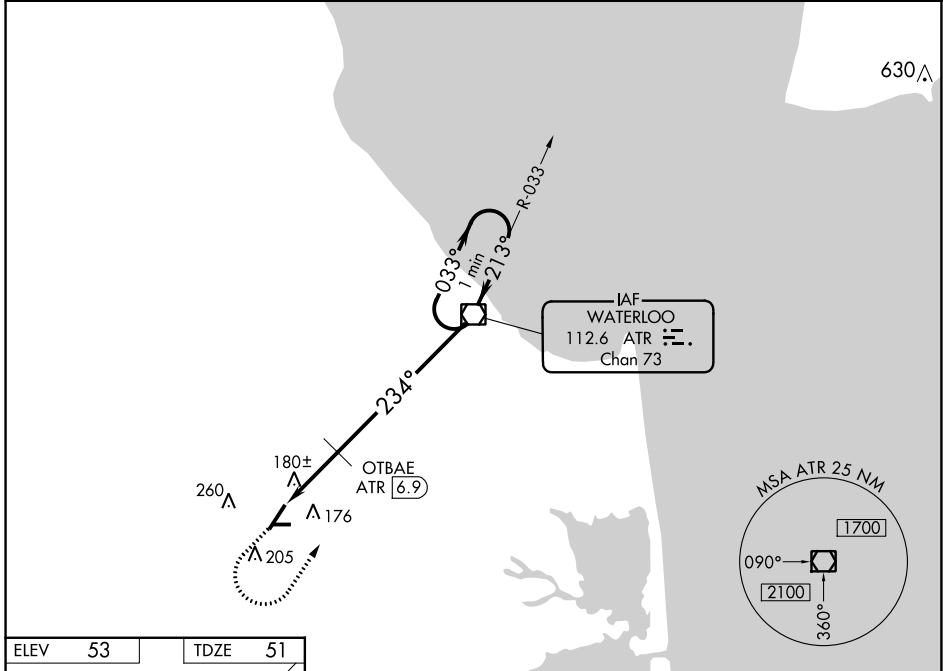
VOR/DME	ATR	APP CRS	Rwy Ldg	<b>5331</b>
<b>112.6</b>		<b>234°</b>	TDZE	<b>51</b>
Chan <b>73</b>			Apt Elev	<b>53</b>

**VOR RWY 22**  
DELAWARE COASTAL (GED)

**⚠** Rwy 22 helicopter visibility reduction below 1 SM NA.  
**⚠** Rwy 22 Straight-In and Circling minimums NA at night.

MISSED APPROACH: Climb to 800 then climbing left turn to 3000 direct ATR VOR/DME and hold.

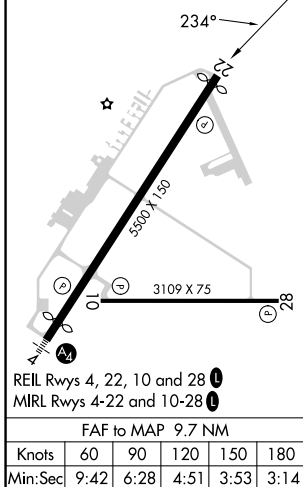
ASOS <b>118.375</b>	DOVER APP CON <b>132.425 257.875</b>	GCO <b>125.55</b>	UNICOM <b>123.0 (CTAF) 0</b>
------------------------	---	----------------------	---------------------------------



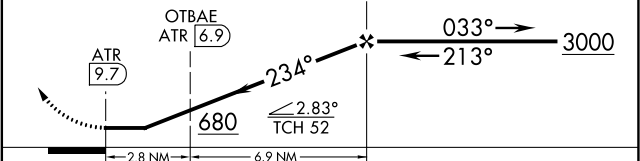
NE-3, 28 NOV 2024 to 26 DEC 2024

NE-3, 28 NOV 2024 to 26 DEC 2024

ELEV 53	TDZE 51
---------	---------



800 3000 ATR VGSI and descent angles not coincident (VGSI Angle 3.00/TCH 45).  
 One Minute Holding Pattern



CATEGORY	A	B	C	D
S-22	680-1	629 (700-1)	680-1¾	629 (700-1¾)
<b>C</b> CIRCLING	680-1	627 (700-1)	720-1¾ 667 (700-1¾)	720-2 667 (700-2)
OTBAE FIX MINIMUMS				
S-22	440-1	389 (400-1)	440-1⅛	389 (400-1⅛)
<b>C</b> CIRCLING	560-1 507 (600-1)	580-1 527 (600-1)	720-1¾ 667 (700-1¾)	720-2 667 (700-2)