

EASTOVER, SOUTH CAROLINA

# HI-TACAN RWY 32

MC ENTIRE JNGB (KMMT)

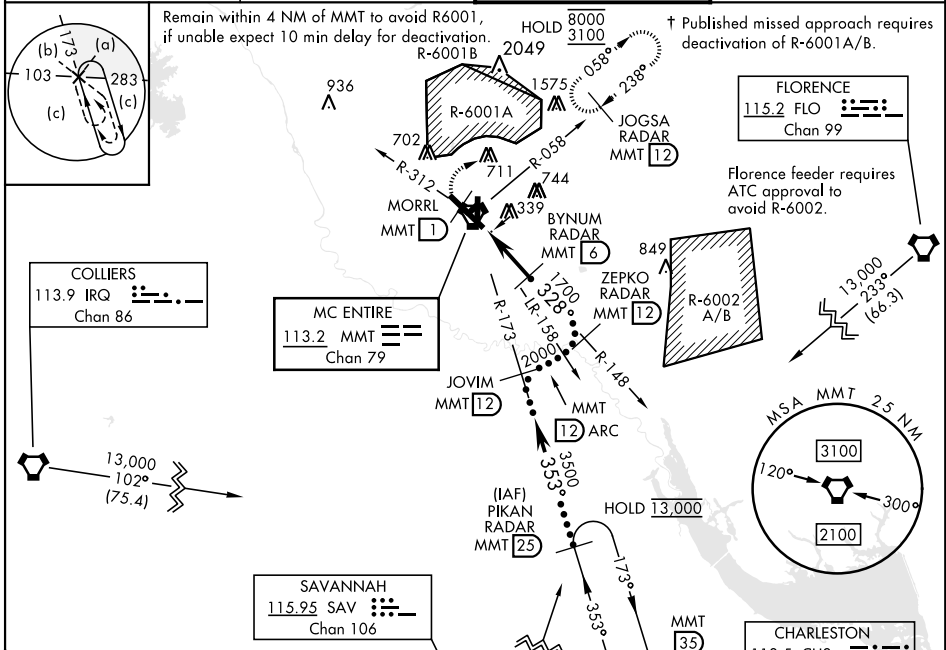
VORTAC MMT <b>113.2</b> Chan 79	APCH CRS <b>328°</b>	Rwy ldg TDZE Arprt Elev <b>9012</b> <b>243</b> <b>254</b>
---------------------------------------	-------------------------	--

[USAF]

⚠️ \* When ALS inop, increase CAT CDE RVR 60, vis to 1½ miles.

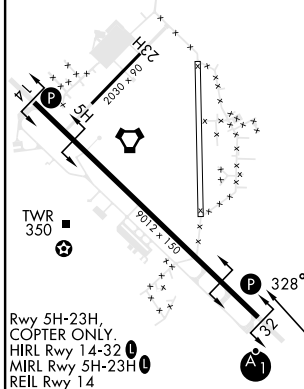
⚠️ MISSED APPROACH: Climb to 1100 direct MORRL/1 DME then climbing right turn to 3100 intercept MMT R-058 direct JOGSA/12 DME and hold.

ATIS ★ <b>327.05</b>	SHAW APP CON <b>125.4 318.1</b>	TOWER ★ <b>132.4 (CTAF) 253.5</b>	GND CON <b>127.625 226.675</b>
-------------------------	------------------------------------	--------------------------------------	-----------------------------------

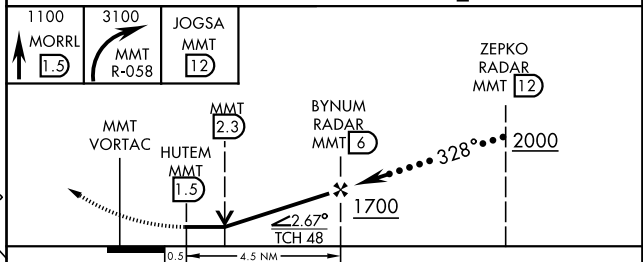


EMERG SAFE ALT 100 NM 3800

ELEV	254	TDZE	243
------	-----	------	-----



FAF to MAP 4.5 NM					
Knots	120	140	160	180	200
Min:Sec	2:15	1:56	1:41	1:30	1:21



CATEGORY	C	D	E
S-32 *	640/40	397	(400-¾)
CIRCLING	880-1¾ 626 (700-1¾)	940-2½ 686 (700-2½)	1020-2¾ 766 (800-2¾)

EASTOVER, SOUTH CAROLINA  
Amdt 4 25MAY17

33°55'N-80°48'W

MC ENTIRE JNGB (KMMT)

# HI-TACAN RWY 32

SE-2, 28 NOV 2024 TO 26 DEC 2024

SE-2, 28 NOV 2024 TO 26 DEC 2024