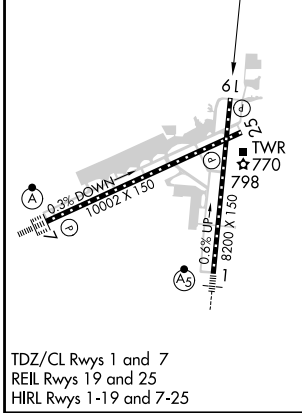
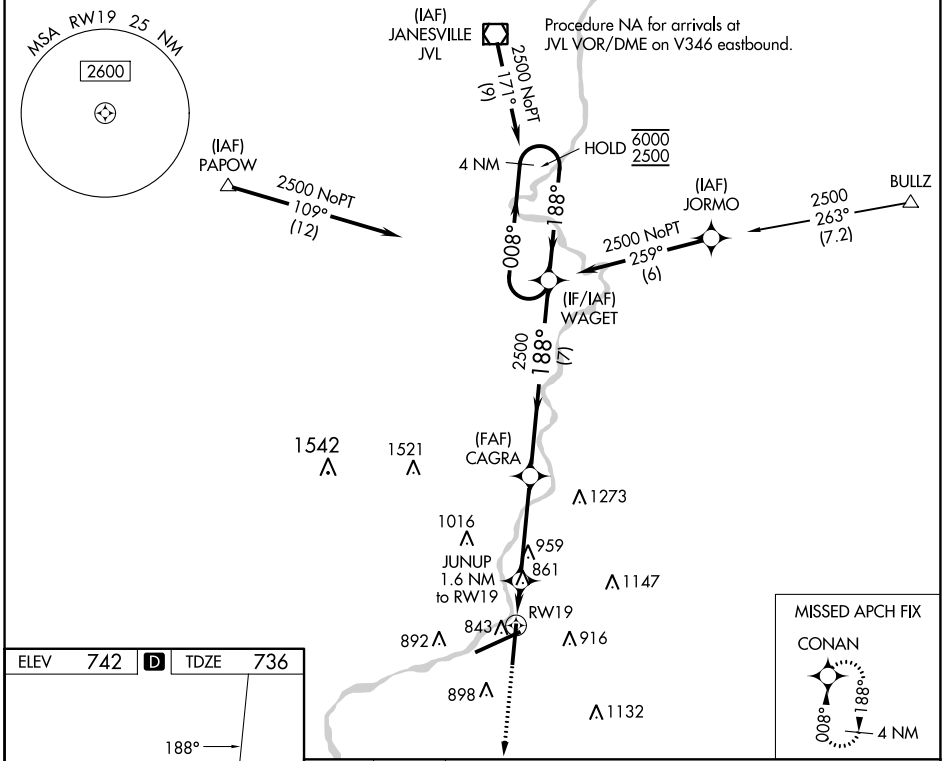


WAAS CH 40435 W19A	APP CRS 188°	Rwy Idg TDZE Apt Elev	8099 736 742
---------------------------------	------------------------	-----------------------------	---

RNAV (GPS) RWY 19

CHICAGO/ROCKFORD INTL (R.F.D)

RNP APCH - GPS.				MISSED APPROACH: Climb to 2500 direct CONAN and hold.	
For uncompensated Baro-VNAV systems, LNAV/VNAV NA below -20°C or above 54°C.					
ATIS 127.6	ROCKFORD APP CON 121.0 327.0	ROCKFORD TOWER 118.1 290.375	GND CON 121.9 290.375	CLNC DEL 119.25	



2500 CONAN	VGSI and RNAV glidepath not coincident (VGSI Angle 3.00/TCH 75).			
↑	JUNUP 1.6 NM to RWY 19	CAGRA 2500	WAGET 4 NM Holding Pattern	
	1 NM to RWY 19	1280	188°	6000/2500 GP 3.00° TCH 50
	1 NM 0.6 NM 3.8 NM 7 NM			
CATEGORY	A	B	C	D
LPV DA		936-3/4	200 (200-3/4)	
LNAV/VNAV DA		1039-7/8	303 (300-7/8)	
LNAV MDA	1120-1	384 (400-1)	1120-1 1/8	384 (400-1 1/8)
CIRCLING	1220-1	1280-1	1320-1 1/2	1460-2 1/4
	478 (500-1)	538 (600-1)	578 (600-1 1/2)	718 (800-2 1/4)

EC-3, 28 NOV 2024 to 26 DEC 2024

EC-3, 28 NOV 2024 to 26 DEC 2024