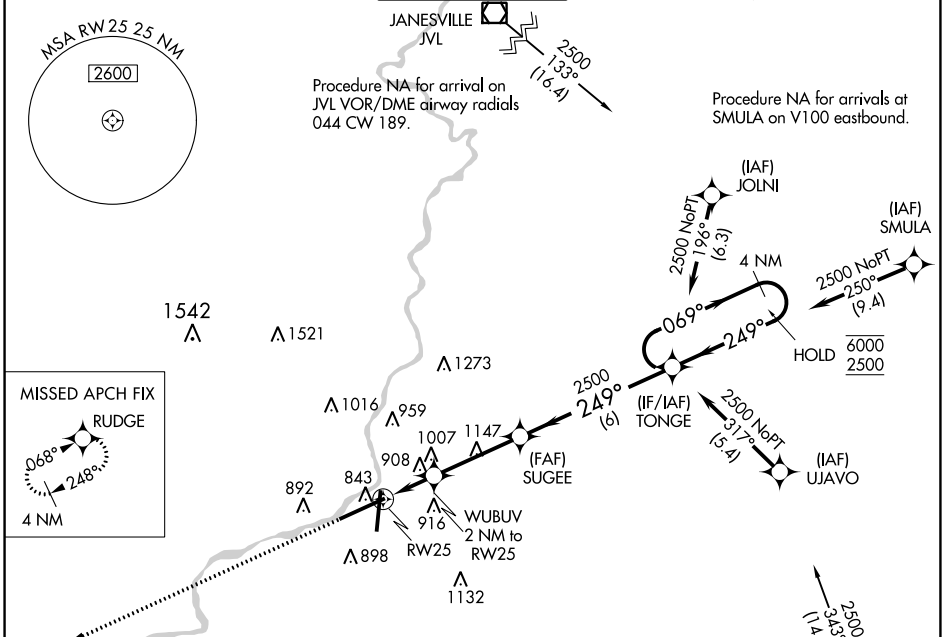


WAAS CH <b>40128</b> <b>W25A</b>	APP CRS <b>249°</b>	Rwy Idg <b>10002</b> TDZE <b>736</b> Apt Elev <b>742</b>
----------------------------------------	------------------------	----------------------------------------------------------------

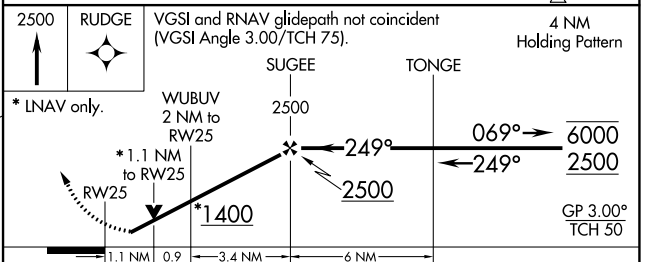
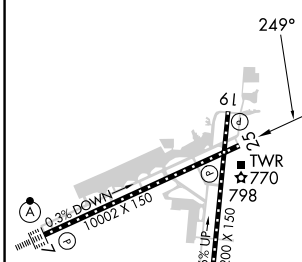
# RNAV (GPS) RWY 25

CHICAGO/ROCKFORD INTL (RFD)

RNP APCH. Rwy 25 helicopter visibility reduction below 3/4 SM NA. For uncompensated Baro-VNAV systems, LNAV/VNAV NA below -25°C or above 39°C.			MISSED APPROACH: Climb to 2500 direct RUDGE and hold.	
ATIS <b>127.6</b>	ROCKFORD APP CON <b>121.0 327.0</b>	ROCKFORD TOWER <b>118.1 290.375</b>	GND CON <b>121.9 290.375</b>	CLNC DEL <b>119.25</b>



ELEV <b>742</b>	<b>D</b>	TDZE <b>736</b>
-----------------	----------	-----------------



CATEGORY	A	B	C	D
LPV DA		986/50	250 (300-1)	
LNAV/VNAV DA		1191-1 3/8	455 (500-1 3/8)	
LNAV MDA		1160/55	424 (500-1)	
CIRCLING	1220-1 478 (500-1)	1280-1 538 (600-1)	1320-1 1/2 578 (600-1 1/2)	1460-2 1/4 718 (800-2 1/4)

REIL Rws 19 and 25  
HIRL Rws 1-19 and 7-25  
TDZ/CL Rws 1 and 7

EC-3, 28 NOV 2024 to 26 DEC 2024

EC-3, 28 NOV 2024 to 26 DEC 2024