

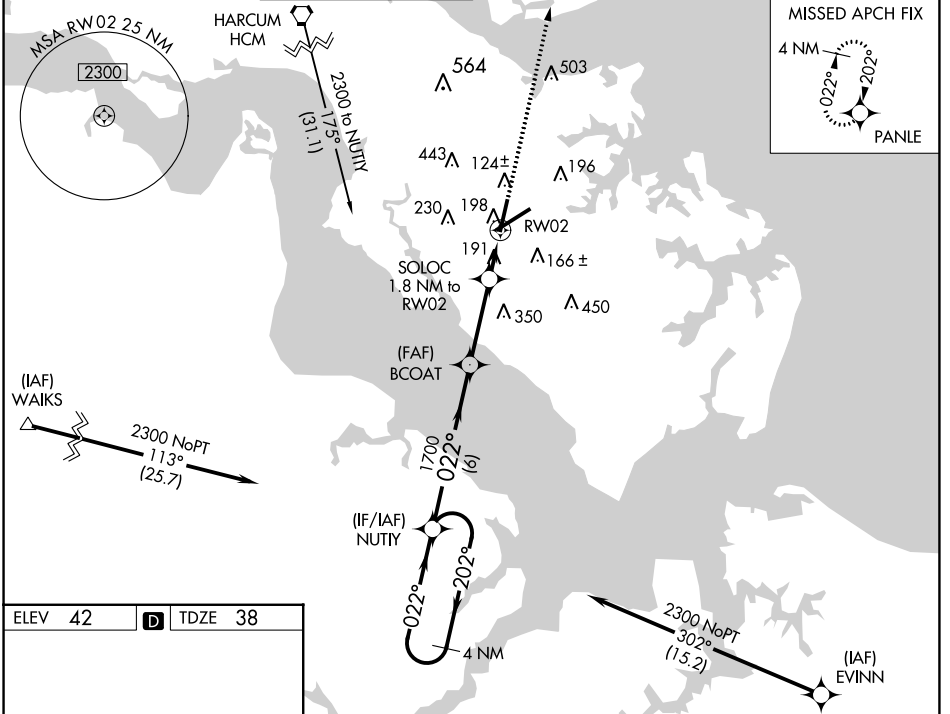
WAAS CH <b>61020</b> <b>W02A</b>	APP CRS <b>022°</b>	Rwy Idg TDZE Apt Elev	<b>6526</b> <b>38</b> <b>42</b>
--	------------------------	-----------------------------	---------------------------------------

# RNAV (GPS) RWY 2

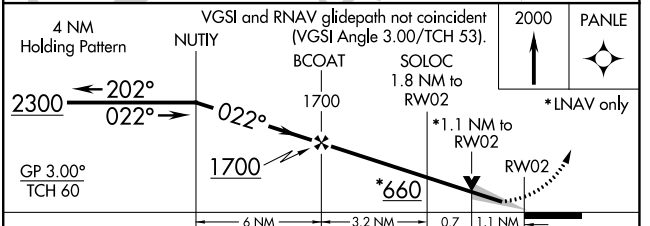
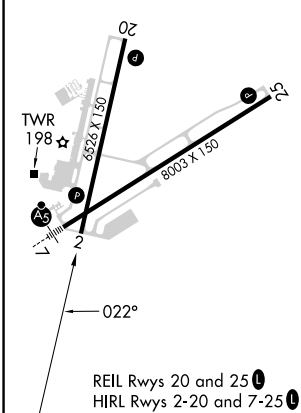
NEWPORT NEWS/WILLIAMSBURG INTL (PHF)

RNP APCH.		MISSED APPROACH: Climb to 2000 direct PANLE and hold.			
<p><b>⚠</b> For uncompensated Baro-VNAV systems, LNAV/VNAV NA below -11°C or above 54°C.</p>					

ATIS <b>128.65</b>	NORFOLK APP CON <b>125.7 335.625</b>	NEWPORT NEWS TOWER* <b>118.7(CTAF) 257.9</b>	GND CON <b>121.9 348.6</b>	CLNC DEL <b>121.65 225.4</b>	UNICOM <b>122.95</b>
-----------------------	---	---	-------------------------------	---------------------------------	-------------------------



ELEV 42	<b>D</b>	TDZE 38
---------	----------	---------



CATEGORY	A	B	C	D
LPV DA	241-1 203 (200-1)			
LNAV/DA VNAV	476-1½ 438 (500-1½)			
LNAV MDA	460-1 422 (500-1)		460-1¼ 422 (500-1¼)	
<b>C</b> CIRCLING	520-1 478 (500-1)	540-1 498 (500-1)	760-2 718 (800-2)	780-2¼ 738 (800-2¼)

NE-3, 28 NOV 2024 to 26 DEC 2024

NE-3, 28 NOV 2024 to 26 DEC 2024